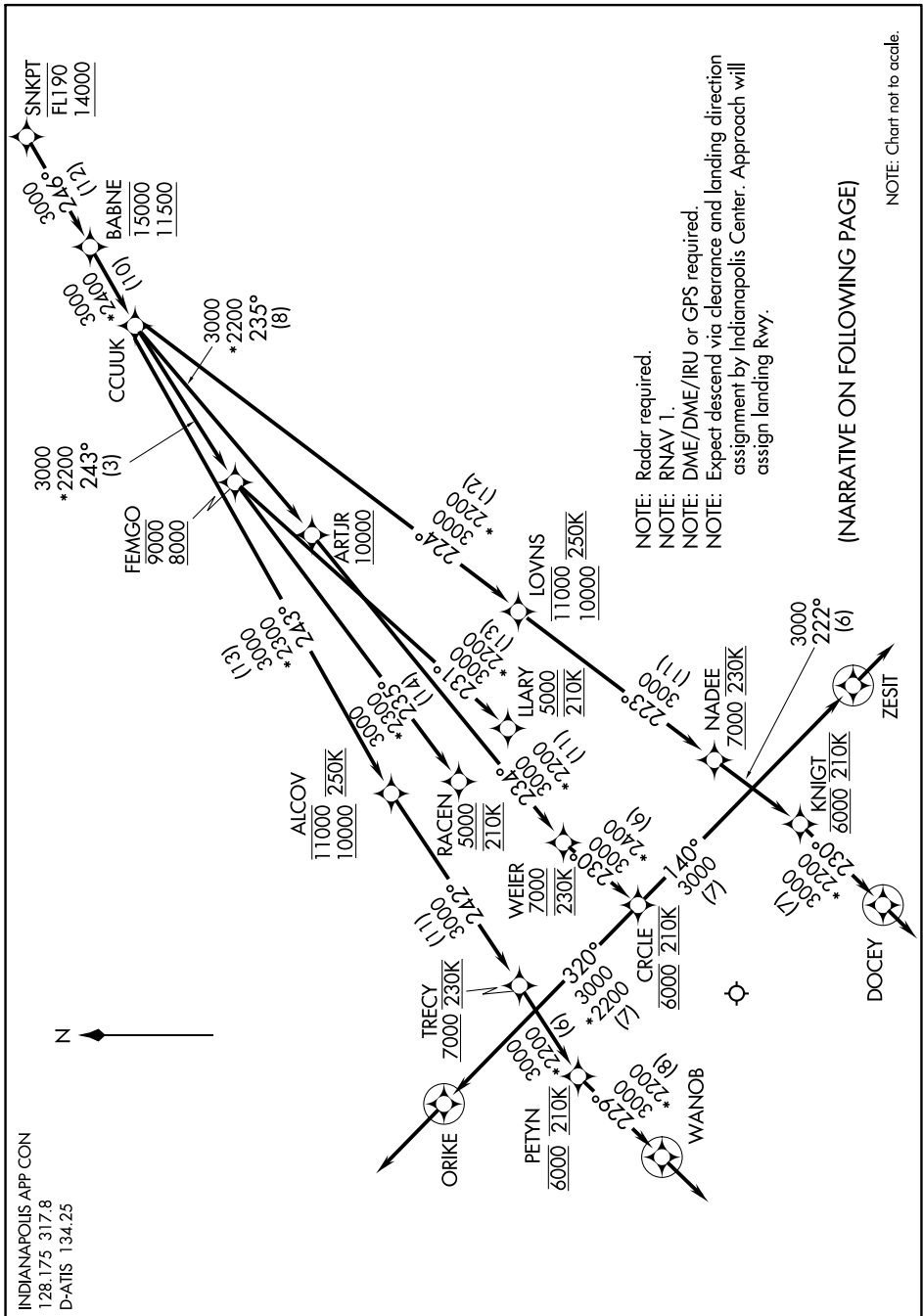


EC-2, 13 JUN 2024 to 11 JUL 2024



NOTE: Radar required.

NOTE: RNAV 1.

NOTE: DME/DME/IRU or GPS required.

NOTE: Expect descend via clearance and landing direction assignment by Indianapolis Center. Approach will assign landing Rwy.

(NARRATIVE ON FOLLOWING PAGE)

NOTE: Chart not to scale.

EC-2, 13 JUN 2024 to 11 JUL 2024