


WAAS CH <b>50316</b> <b>W16A</b>	APP CRS <b>159°</b>	Rwy Idg TDZE <b>341</b> Apt Elev <b>341</b>	<b>5387</b>
--	------------------------	---	-------------

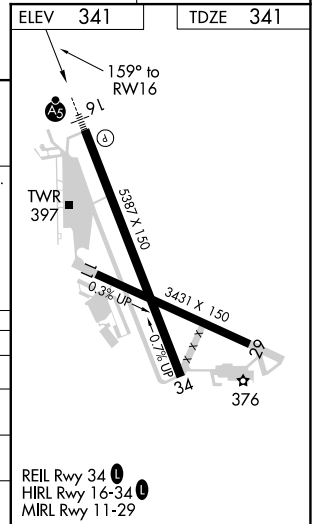
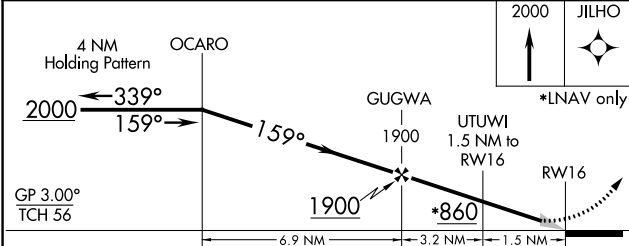
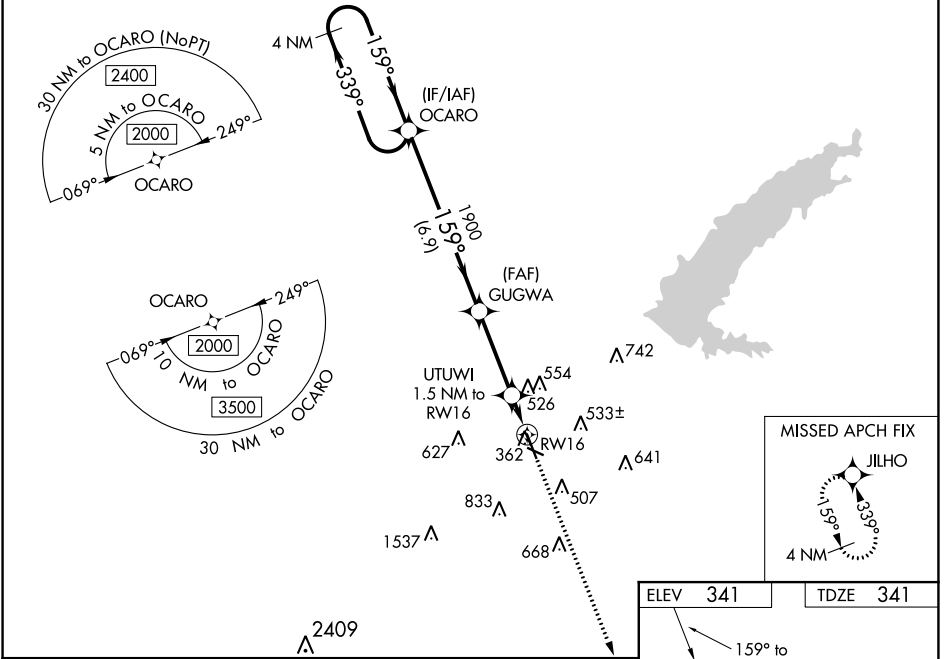
# RNAV (GPS) RWY 16

HAWKINS FLD (HKS)

**⚠** Baro-VNAV NA when using Jackson-Medgar Wiley Evers Intl altimeter setting. For uncompensated Baro-VNAV systems, LNAV/VNAV NA below -6°C (22°F) or above 54°C (130°F). DME/DME RNP-0.3 NA. When local altimeter setting not received, use Jackson-Medgar Wiley Evers Intl altimeter setting and increase all DA 19 feet and all MDA 20 feet. Increase LNAV/VNAV all Cats and LNAV Cats C/D visibilities 1/8 mile and Circling Cat C 1/4 mile. For inop MALSRR when using Jackson-Medgar Wiley Evers Intl altimeter setting increase LNAV/VNAV all Cats to 1 1/8.

**MALSRR**  
  
**MISSED APPROACH:**  
 Climb to 2000 direct JILHO and hold.

ASOS <b>120.625</b>	JACKSON APP CON * <b>123.9 319.2</b>	HAWKINS TOWER * <b>119.65 (CTAF) 0 257.8</b>	GND CON <b>121.9 239.0</b>	CLNC DEL <b>121.9</b> (When twr closed)	UNICOM <b>122.95</b>
------------------------	---	---	-------------------------------	---	-------------------------



CATEGORY	A	B	C	D
LPV DA		542-1/2	201 (300-1/2)	
LNAV/VNAV DA		677-5/8	336 (400-5/8)	
LNAV MDA	780-1/2	439 (500-1/2)	780-3/4	439 (500-3/4)
<b>CIRCLING</b>	860-1 519 (600-1)	880-1 539 (600-1)	1140-2 1/4 799 (800-2 1/4)	1320-3 979 (1000-3)

SC-4, 13 JUN 2024 to 11 JUL 2024

SC-4, 13 JUN 2024 to 11 JUL 2024