

LOC/DME I-GQR 111.75 Chan 54 (Y)	APP CRS 035°	Rwy Idg 4270 TDZE 744 Apt Elev 757
-----------------------------------------------	------------------------	---------------------------------------------------------------

ILS or LOC RWY 4

CHARLES B WHEELER DOWNTOWN (MKC)

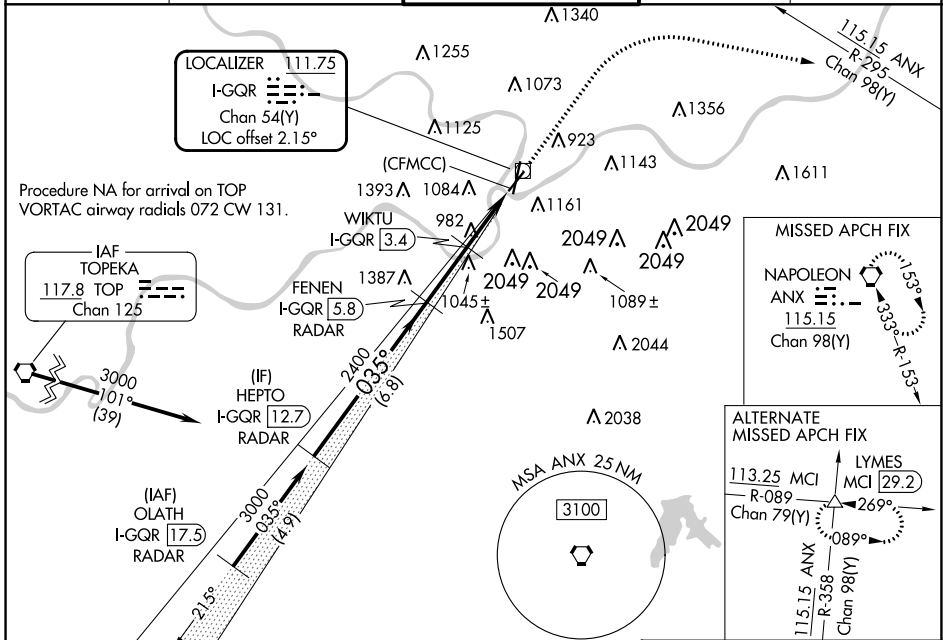
DME or RADAR required for procedure entry. DME or RADAR required for LOC only.

▼ Circling NA east of Rwy 1-19. Autopilot coupled approach NA below 1013.

▲ Circling NA to Rwy 22. Circling NA for Cat D to Rwy 4. Rwy 4 helicopter visibility reduction below RVR 4000 NA.

MISSED APPROACH: Climb to 3100 then right turn heading 100° and on ANX VORTAC R-295 to ANX VORTAC and hold.

ATIS 120.75	KANSAS CITY APP CON 118.4 307.35	DOWNTOWN TOWER 133.3 233.7	CLNC DEL 121.9	GND CON 121.9
-----------------------	--------------------------------------------	--------------------------------------	--------------------------	-------------------------



HEPTO I-GQR **12.7** RADAR

3000

GS 3.00° TCH 52

035°

2400

1560

6.8 NM

2.4 NM

1.2 NM

1.4 NM

3100

VGSI and ILS glidepath not coincident (VGSI Angle 3.00/TCH 35).

FENEN I-GQR **5.8** RADAR

2400

WIKTU I-GQR **3.4**

I-GQR **2.2**

(CFMCC) I-GQR **0.8**

ANX R-295

ANX

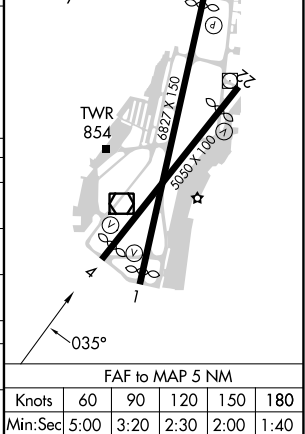
ELEV 757

TDZE 744

HIRL Rws 4-22 and 1-19

REL Rws 1 and 22

RLS Rwy 1



CATEGORY	A	B	C	D
S-ILS 4	1001/40 257 (300-¾)			NA
S-LOC 4	1560/55 816 (900-1)	1560-1¼ 816 (900-1¼)	1560-2½ 816 (900-2½)	NA
C CIRCLING	1560-1 803 (900-1)	1560-1¼ 803 (900-1¼)	1560-2½	803 (900-2½)
WIKTU FIX MINIMUMS				
S-LOC 4	1240/55	496 (500-1)	1240-1⅜ 496 (500-1⅜)	NA
C CIRCLING	1380-1 623 (700-1)	1400-1 643 (700-1)	1460-2 703 (800-2)	1540-2½ 783 (800-2½)

NC-3, 13 JUN 2024 to 11 JUL 2024

NC-3, 13 JUN 2024 to 11 JUL 2024

FAF to MAP 5 NM					
Knots	60	90	120	150	180
Min:Sec	5:00	3:20	2:30	2:00	1:40