

(RACER8.MCI) 24137

# RACER EIGHT DEPARTURE

AL-213 (FAA)

CHARLES B WHEELER DOWNTOWN (MKC)

KANSAS CITY, MISSOURI

**TOP ALTITUDE:**  
**10000**

RADAR required.

KANSAS CITY DEP CON  
118.4 307.35  
ATIS  
120.75  
CLNC DEL  
121.9

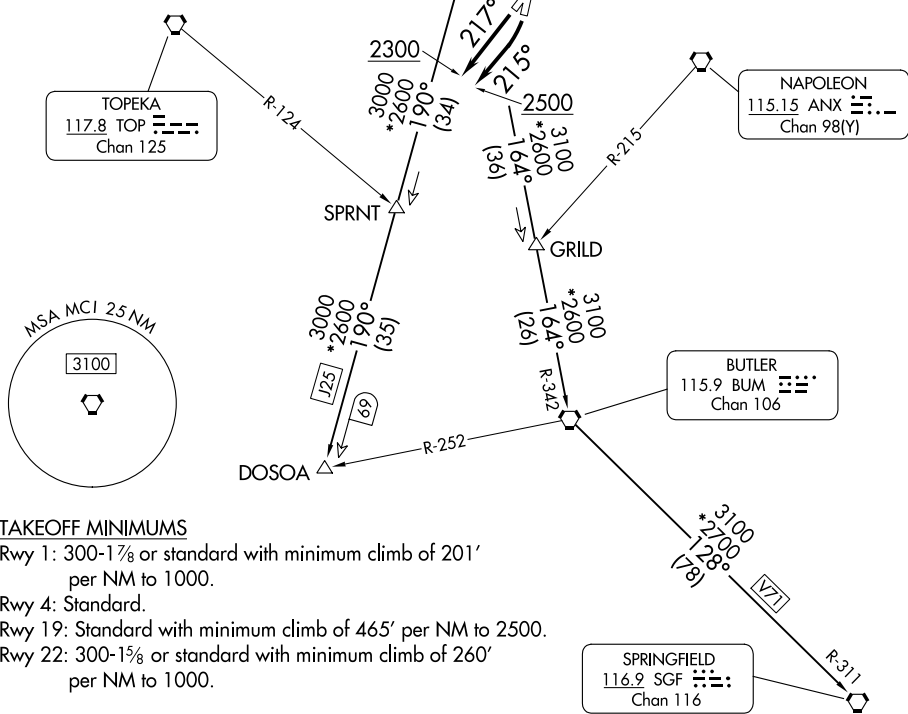
KANSAS CITY  
113.25 MCI  
Chan 79(Y)

TOPEKA  
117.8 TOP  
Chan 125

NAPOLEON  
115.15 ANX  
Chan 98(Y)

BUTLER  
115.9 BUM  
Chan 106

SPRINGFIELD  
116.9 SGF  
Chan 116



### TAKEOFF MINIMUMS

Rwy 1: 300-1 $\frac{7}{8}$  or standard with minimum climb of 201' per NM to 1000.

Rwy 4: Standard.

Rwy 19: Standard with minimum climb of 465' per NM to 2500.

Rwy 22: 300-1 $\frac{7}{8}$  or standard with minimum climb of 260' per NM to 1000.

NOTE: Chart not to scale.

### DEPARTURE ROUTE DESCRIPTION

**TAKEOFF RUNWAY 1:** Climb on heading 012° to 1700, thence. . .

**TAKEOFF RUNWAY 4:** Climb on heading 037° to 1900, thence. . .

**TAKEOFF RUNWAY 19:** Climbing right turn heading 215° to 2500, thence. . .

**TAKEOFF RUNWAY 22:** Climb on heading 217° to 2300, thence. . .

. . . climb on assigned heading for RADAR vectors to appropriate route. Maintain 10000 or as assigned by ATC, expect filed altitude 10 minutes after departure.

**BUTLER TRANSITION (RACER8.BUM):** From over MCI VORTAC on MCI R-164 and BUM R-342 to BUM VORTAC.

**DOSOA TRANSITION (RACER8.DOSOA):** From over MCI VORTAC on MCI R-190 to DOSOA.

**SPRINGFIELD TRANSITION (RACER8.SGF):** From over MCI VORTAC on MCI R-164 and BUM R-342 to BUM VORTAC, then on BUM R-128 and SGF R-311 to SGF VORTAC.

# RACER EIGHT DEPARTURE

(RACER8.MCI) 05OCT23

KANSAS CITY, MISSOURI

CHARLES B WHEELER DOWNTOWN (MKC)

NC-3, 13 JUN 2024 to 11 JUL 2024

NC-3, 13 JUN 2024 to 11 JUL 2024