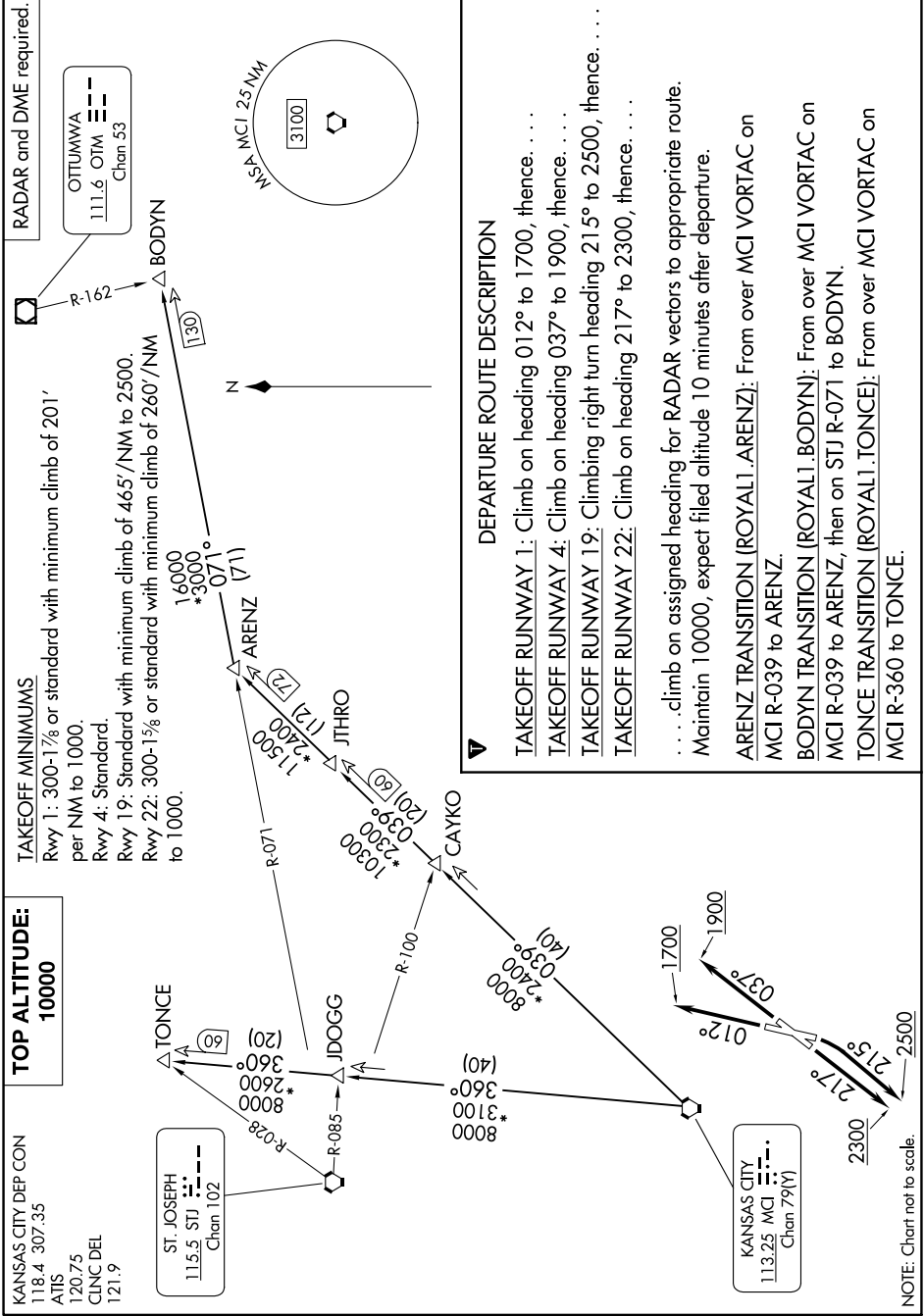


ROYAL ONE DEPARTURE

NC-3, 13 JUN 2024 to 11 JUL 2024



TOP ALTITUDE:
10000

KANSAS CITY DEP CON
118.4 307.35
ATIS
120.75
CLNC DEL
121.9

ST. JOSEPH
115.5 STJ
Chon 102

KANSAS CITY
113.25 MCI
Chon 79(Y)

DEPARTURE ROUTE DESCRIPTION

- TAKEOFF RUNWAY 1:** Climb on heading 012° to 1700, thence . . .
 - TAKEOFF RUNWAY 4:** Climb on heading 037° to 1900, thence . . .
 - TAKEOFF RUNWAY 19:** Climbing right turn heading 215° to 2500, thence . . .
 - TAKEOFF RUNWAY 22:** Climb on heading 217° to 2300, thence . . .
- . . .climb on assigned heading for RADAR vectors to appropriate route.
Maintain 10000, expect filed altitude 10 minutes after departure.
- ARENZ TRANSITION (ROYAL1.ARENZ):** From over MCI VORTAC on MCI R-039 to ARENZ.
BODYN TRANSITION (ROYAL1.BODYN): From over MCI VORTAC on MCI R-039 to ARENZ, then on STJ R-071 to BODYN.
TONCE TRANSITION (ROYAL1.TONCE): From over MCI VORTAC on MCI R-360 to TONCE.

NOTE: Chart not to scale.

ROYAL ONE DEPARTURE

NC-3, 13 JUN 2024 to 11 JUL 2024