

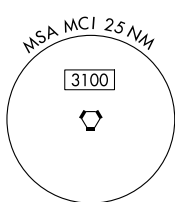
# WILDCAT SIX DEPARTURE

AL-213 (FAA)

CHARLES B WHEELER DOWNTOWN (MKC)  
KANSAS CITY, MISSOURI

KANSAS CITY DEP CON  
118.4 307.35  
ATIS  
120.75  
CLNC DEL  
121.9

RADAR required.



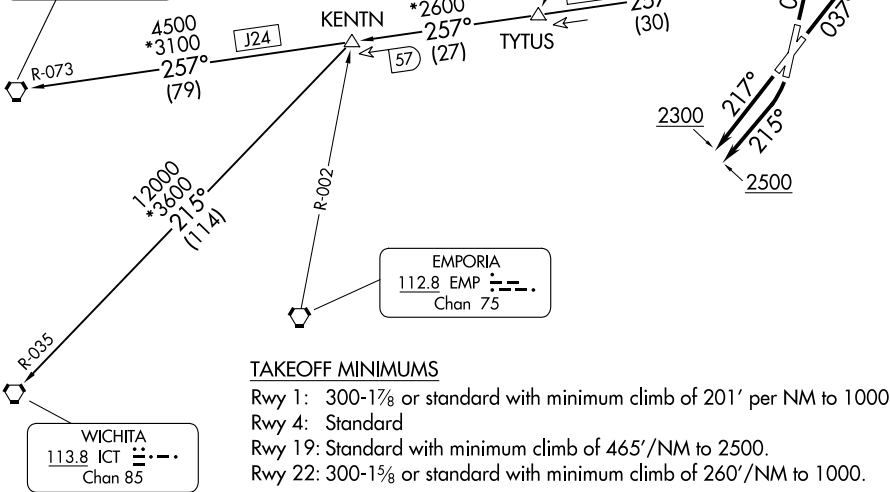
ST JOSEPH  
115.5 STJ ---  
Chan 102

**TOP ALTITUDE:**  
**10000**

KANSAS CITY  
113.25 MCI ---  
Chan 79(Y)

SALINA  
117.1 SLN ---  
Chan 118

\*3100 when using Salina  
or Wichita Transition.



### TAKEOFF MINIMUMS

- Rwy 1: 300-1 $\frac{1}{8}$  or standard with minimum climb of 201' per NM to 1000.
- Rwy 4: Standard
- Rwy 19: Standard with minimum climb of 465'/NM to 2500.
- Rwy 22: 300-1 $\frac{1}{8}$  or standard with minimum climb of 260'/NM to 1000.

NOTE: Chart not to scale.

### DEPARTURE ROUTE DESCRIPTION

- TAKEOFF RUNWAY 1:** Climb on heading 012° to 1700, thence. . .
  - TAKEOFF RUNWAY 4:** Climb on heading 037° to 1900, thence. . .
  - TAKEOFF RUNWAY 19:** Climbing right turn heading 215° to 2500, thence. . .
  - TAKEOFF RUNWAY 22:** Climb on heading 217° to 2300, thence. . .
- . . . climb on assigned heading for RADAR vectors to appropriate route. Maintain 10000, expect filed altitude 10 minutes after departure.

**KENTN TRANSITION (WLDCT6.KENTN):** From over MCI VORTAC on MCI R-257 to KENTN.

**SALINA TRANSITION (WLDCT6.SLN):** From over MCI VORTAC on MCI R-257 and SLN R-073 to SLN VORTAC.

**WICHITA TRANSITION (WLDCT6.ICT):** From over MCI VORTAC on MCI R-257 to KENTN, then on ICT R-035 to ICT VORTAC.