

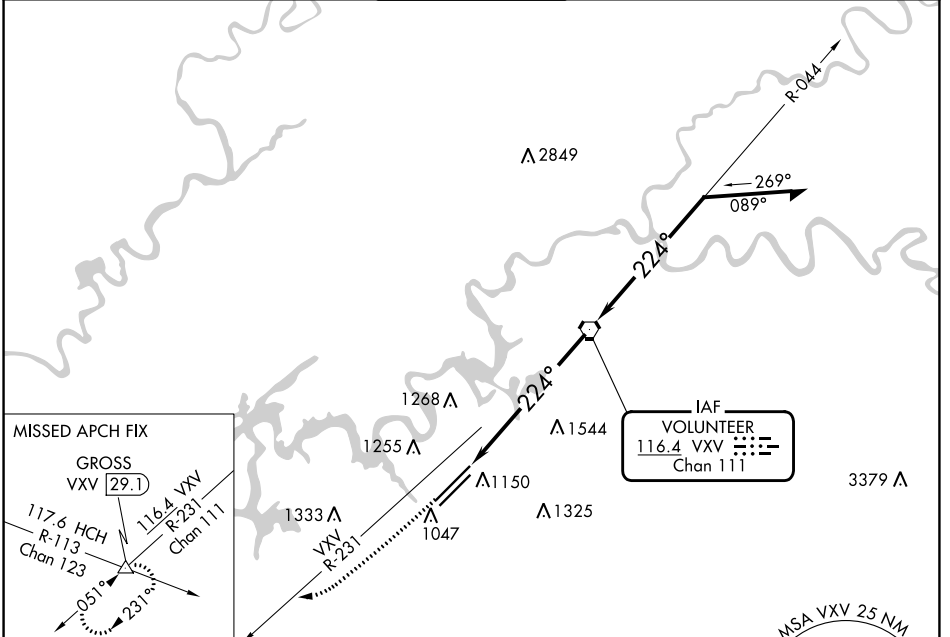
VOR/DME VXX <b>116.4</b> Chan <b>111</b>	APP CRS <b>224°</b>	Rwy Idg <b>9495</b> TDZE <b>984</b> Apt Elev <b>986</b>
--	------------------------	---

# VOR RWY 23R

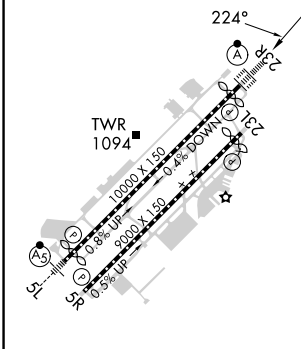
MC GHEE TYSON (TYS)

<p>ASR</p>	<p>ALSIF-2</p>	MISSED APPROACH: Climb to 3000 on VXV VORTAC R-231 to GROSS INT/29.1 DME and hold.

ATIS <b>128.35</b>	KNOXVILLE APP CON <b>123.9 360.8</b>	KNOXVILLE TOWER <b>121.2 257.8</b>	GND CON <b>121.9 348.6</b>	CLNC DEL <b>121.65</b>
-----------------------	---	---------------------------------------	-------------------------------	---------------------------



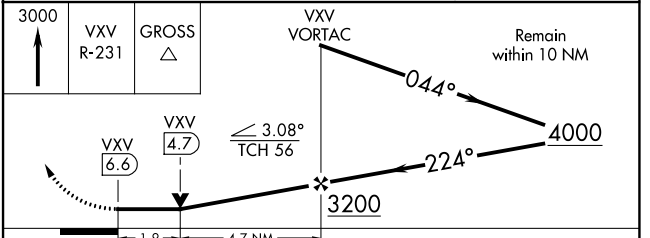
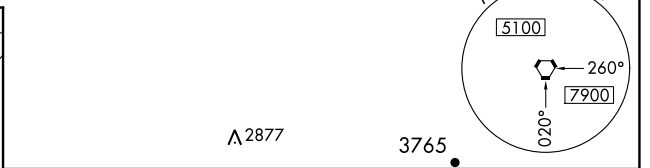
ELEV <b>986</b>	<b>D</b>	TDZE <b>984</b>
-----------------	----------	-----------------



HIRL Rwy 5L-23R and 5R-23L  
REIL Rwy 5R and 23L  
TDZ/CL Rwy 5R and 23R

FAF to MAP 6.6 NM

Knots	60	90	120	150	180
Min:Sec	6:36	4:24	3:18	2:38	2:12



CATEGORY	A	B	C	D
S-23R	1640/24	656 (700-½)	1640-1⅓	656 (700-1⅓)
<b>C</b> CIRCLING	1640-1	654 (700-1)	1660-2 674 (700-2)	1900-3 914 (1000-3)

SE-1, 13 JUN 2024 to 11 JUL 2024

SE-1, 13 JUN 2024 to 11 JUL 2024