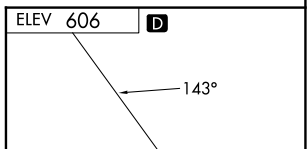
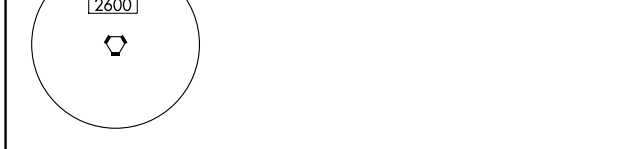
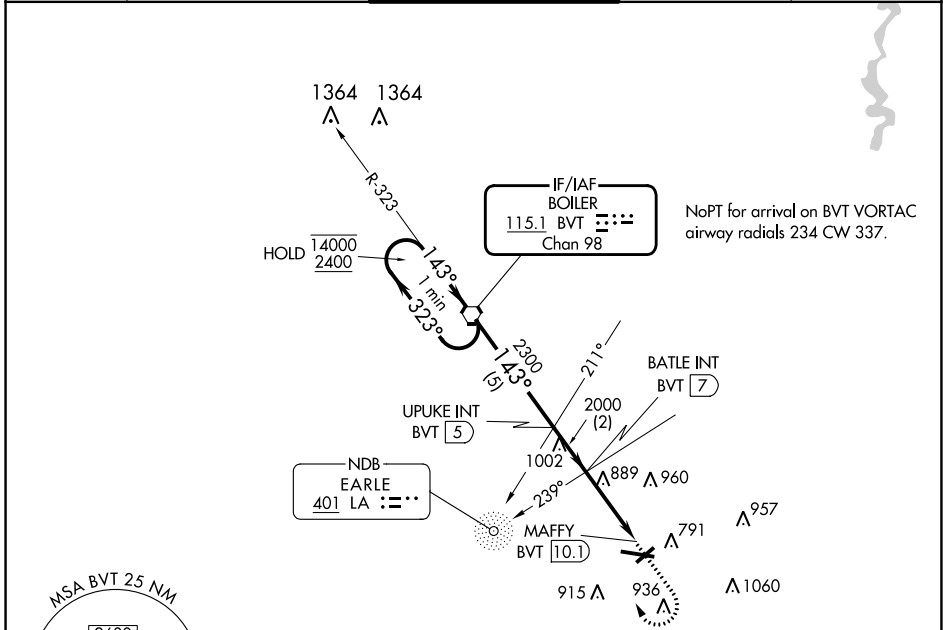


VORTAC BVT 115.1 Chan 98	APP CRS 143°	Rwy Idg TDZE Apt Elev N/A N/A 606
--	------------------------	---

VOR-A
PURDUE UNIVERSITY (LAF)

ADF or DME required.	MISSED APPROACH: Climb to 2300 then climbing right turn to 2400 direct BVT VORTAC and hold.
<p>⚠ Circling Rwy 23 NA at night.</p> <p>⚠ When local altimeter setting not received, use Vermilion Rgnl altimeter setting and increase all MDAs 100 feet and Cat C and D visibility 1/2 SM.</p>	

ATIS 127.75	GRISSOM APP CON ★ 123.85 291.675	LAFAYETTE TOWER ★ 119.6 (CTAF) 343.625	GND CON 121.9 343.625	UNICOM 122.95
-----------------------	--	--	---------------------------------	-------------------------



	2300	2400	BVT
	↑	↷	⬡

HIRL Rwy 10-28	Ⓡ
REIL Rws 5, 23 and 28	Ⓡ
MIRL Rwy 5-23	Ⓡ

CATEGORY	A	B	C	D	FAF to MAP 3.1 NM					
CIRCLING	1160-1	554 (600-1)	1320-2 714 (800-2)	1420-2¾ 814 (900-2¾)	Knots	60	90	120	150	180
					Min:Sec	3:06	2:04	1:33	1:14	1:02

EC-2, 13 JUN 2024 to 11 JUL 2024

EC-2, 13 JUN 2024 to 11 JUL 2024