

# TACAN RWY 33

LAKEHURST MAXFIELD FLD,

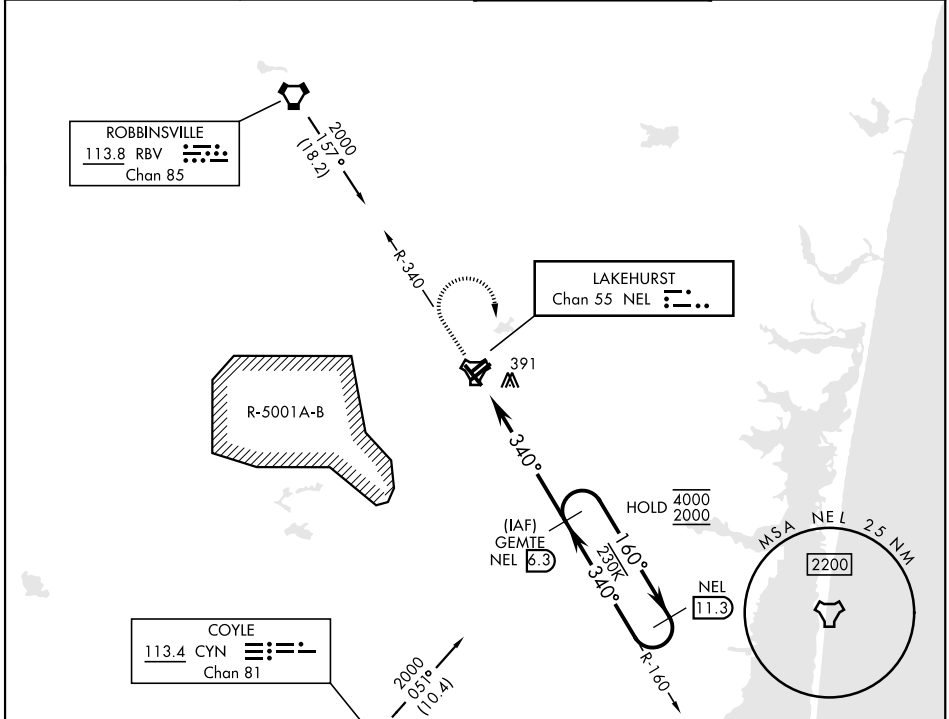
(JOINT BASE MC GUIRE DIX LAKEHURST) (KNEL)

TACAN NEL Chan <b>55</b>	APCH CRS <b>340°</b>	Rwy Idg TDZE Arpt Elev <b>5001</b> <b>88</b> <b>101</b>
-----------------------------	-------------------------	--

AL-223 [USN]

MISSED APPROACH: Climb to 700, then climbing right turn to 2000 to intercept NEL TACAN R-160 to GEMTE and hold.

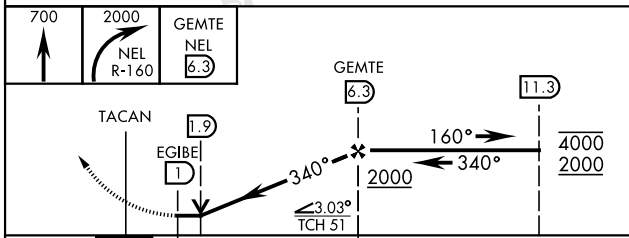
ATIS ★ <b>276.525</b>	MC GUIRE APP CON <b>126.475 363.8</b>	TOWER ★ <b>127.775 360.2</b>	GND CON <b>118.375 307.375</b>
--------------------------	--	---------------------------------	-----------------------------------



NE-2, 13 JUN 2024 to 11 JUL 2024

NE-2, 13 JUN 2024 to 11 JUL 2024

EMERG SAFE ALT 100 NM 4100



ELEV 101	TDZE 88
----------	---------

CATEGORY	A	B	C	D
S-33	600-1 512 (500-1)	600-1 $\frac{3}{8}$ 512 (500-1 $\frac{3}{8}$ )		
CIRCLING	660-1 559 (600-1)	720-1 619 (700-1)	720-1 $\frac{3}{4}$ 619 (700-1 $\frac{3}{4}$ )	720-2 619 (700-2)

HIRL Rwy 6-24  
MIRL Rwy 063°-243°