

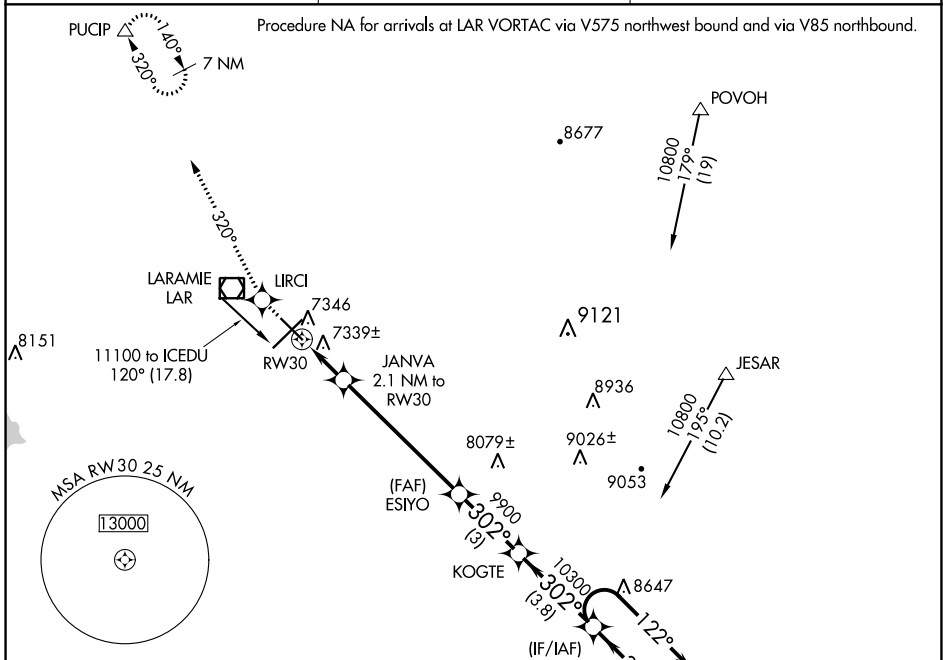
WAAS CH <b>53600</b> W30A	APP CRS <b>302°</b>	Rwy Idg TDZE Apt Elev <b>6301</b> <b>7278</b> <b>7284</b>
---------------------------------	------------------------	--

# RNAV (GPS) RWY 30

LARAMIE RGNL (L.A.R.)

<p><b>▽</b> Inop table does not apply. DME/DME RNP-0.3 NA. For uncompensated Baro-VNAV systems, LNAV/VNAV NA below -29°C (-20°F) or above 35°C (95°F).</p>	<p>ODALS </p>	<p>MISSED APPROACH: Climb to 9400 direct LIRCI and via 320° track to PUCIP and hold.</p>
--	-------------------	--

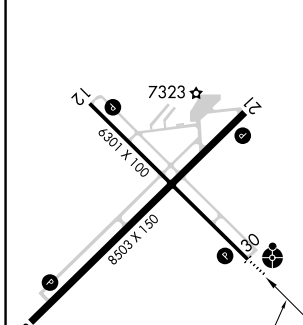
ASOS <b>135.475</b>	DENVER CENTER <b>125.9 284.7</b>	UNICOM <b>123.05</b> (CTAF) <b>0</b>
------------------------	-------------------------------------	---



NW-1, 13 JUN 2024 to 11 JUL 2024

NW-1, 13 JUN 2024 to 11 JUL 2024

ELEV 7284	<b>D</b> TDZE 7278
-----------	--------------------



REIL Rwy 3, 12 and 21 <b>0</b>
MIRL Rwy 3-21 and 12-30 <b>0</b>

9400	LIRCI	tr 320°	PUCIP	ICEDU	7 NM Holding Pattern
*LNAV only		JANVA 2.1 NM to RW30	ESIYO	KOGTE	
*0.9 NM to RW30					
		7980	9900	10300	10800
		0.9	1.2	5.8	3
		1.2	3	3.8	
CATEGORY	A	B	C	D	
LPV DA		7528-1	250 (300-1)		
LNAV/VNAV DA		7629-1¼	351 (400-1¼)		
LNAV MDA		7600-1	322 (400-1)		
CIRCLING	7660-1¼ 376 (400-1¼)	7760-1¼ 476 (500-1¼)	7880-1½ 596 (600-1½)	7920-2 636 (700-2)	