

WAAS CH <b>99528</b> <b>W36A</b>	APP CRS <b>360°</b>	Rwy Idg <b>5199</b> TDZE <b>428</b> Apt Elev <b>430</b>
--	------------------------	---

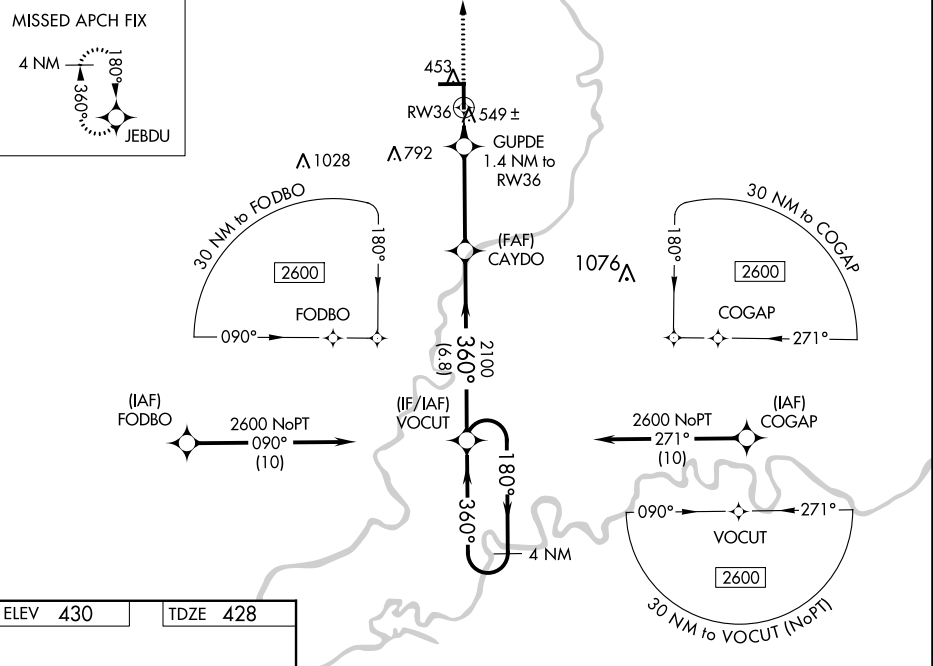
# RNAV (GPS) RWY 36

LAWRENCEVILLE-VINCENNES INTL (LWV)

**▼** Baro-VNAV NA when using Mount Carmel altimeter setting. For uncompensated Baro-VNAV systems, LNAV/VNAV NA below -15°C (5°F) or above 41°C (105°F). Rwy 36 Straight-in and Circling minimums NA at night. DME/DME RNP-0.3 NA. Helicopter visibility reduction below 1 SM NA. When local altimeter setting not received, use Mount Carmel altimeter setting; increase LPV DA to 704 feet; increase LNAV/VNAV DA to 850 feet and all visibilities ½ SM; increase all MDAs 40 feet and LNAV visibility Cat C/D ½ SM and Circling visibility Cat D ¼ SM.

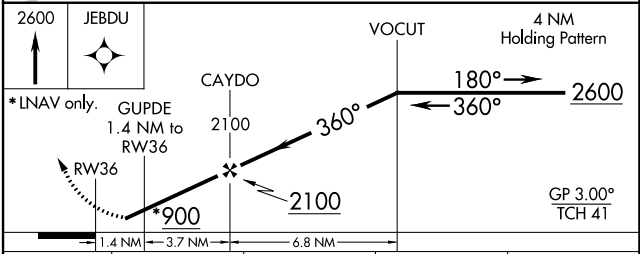
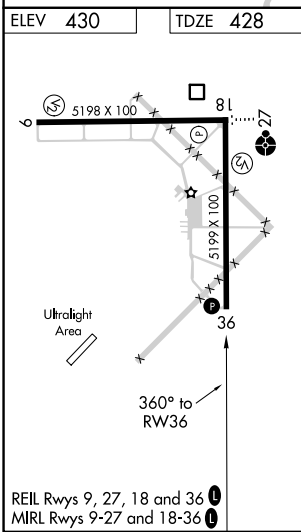
**MISSED APPROACH:**  
Climb to 2600 direct JEBDU and hold.

ASOS <b>118.0</b>	EVANSVILLE APP CON ★ <b>125.6 343.7</b>	UNICOM <b>122.8 (CTAF) ①</b>
----------------------	--	---------------------------------



EC-3, 13 JUN 2024 to 11 JUL 2024

EC-3, 13 JUN 2024 to 11 JUL 2024



CATEGORY	A	B	C	D
LPV DA		678-1	250 (300-1)	
LNAV/VNAV DA		824-1½	396 (400-1½)	
LNAV MDA		800-1	372 (400-1)	
CIRCLING	880-1 450 (500-1)	900-1 470 (500-1)	940-1½ 510 (600-1½)	1160-2¼ 730 (800-2¼)