

WAAS CH 93728	APP CRS 090°	Rwy ldg 5198 TDZE 428 Apt Elev 430
-------------------------	------------------------	---

RNAV (GPS) RWY 9

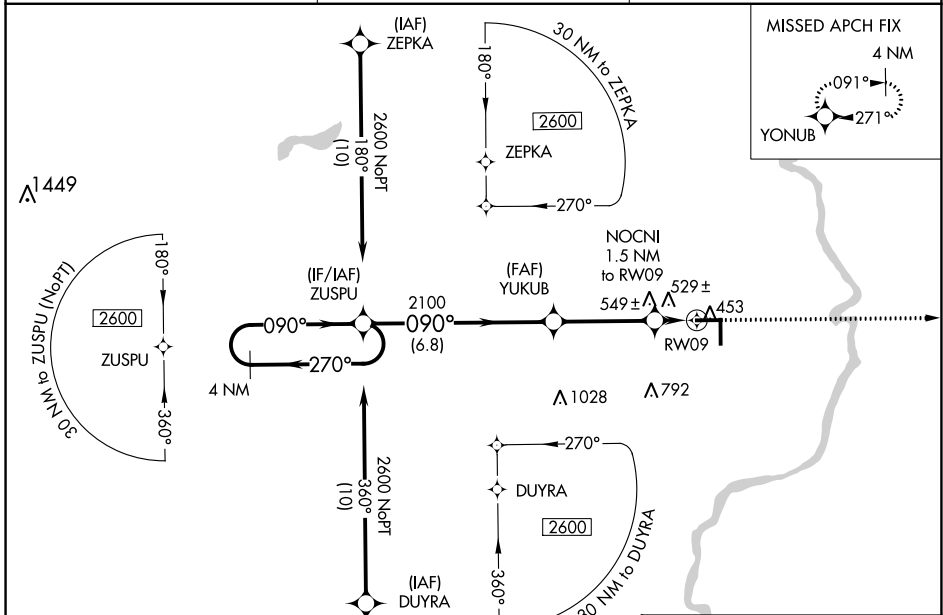
LAWRENCEVILLE-VINCENNES INTL (LWV)

⚠ Baro-VNAV NA when using Mount Carmel altimeter setting. For uncompensated Baro-VNAV systems, LNAV/VNAV NA below -15°C (5°F) or above 41°C (105°F). DME/DME RNP-0.3 NA.

⚠ When local altimeter setting not received, use Mount Carmel altimeter setting: increase LPV DA to 704 feet and all visibilities 1/8 SM; increase LNAV/VNAV DA to 855 feet and all visibilities 1/8 SM; increase all MDAs 40 feet and LNAV visibility Cat C/D 1/8 SM, and Circling visibility Cat D 1/4 SM. Circling to Rwy 36 NA at night.

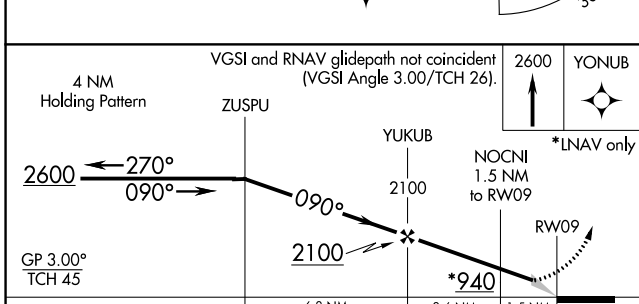
MISSED APPROACH:
Climb to 2600 direct YONUB and hold.

ASOS 118.0	EVANSVILLE APP CON ★ 125.6 343.7	UNICOM 122.8 (CTAF) 0
----------------------	--	---------------------------------

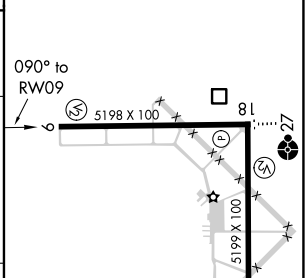


EC-3, 13 JUN 2024 to 11 JUL 2024

EC-3, 13 JUN 2024 to 11 JUL 2024



ELEV 430	TDZE 428
----------	----------



CATEGORY	A	B	C	D
LPV DA		678-3/4	250 (300-3/4)	
LNAV/VNAV DA		829-13/8	401 (400-13/8)	
LNAV MDA	820-1	392 (400-1)	820-1 1/8	392 (400-1 1/8)
CIRCLING	880-1 450 (500-1)	900-1 470 (500-1)	940-1 1/2 510 (600-1 1/2)	1160-2 1/4 730 (800-2 1/4)

REIL Rwy 9, 27, 18 and 36 **0**
MIRL Rwy 9-27 and 18-36 **0**