

HI-ILS Z or LOC Z RWY 18

LOC I-OCZ 111.1	APCH CRS 177°	Rwy Idg 12,901 TDZE 1195 Arprt Elev 1219	AL-232 [USAF]	LINCOLN (KLNK)
---------------------------	-------------------------	---	---------------	----------------

DME, RADAR required for procedure entry.

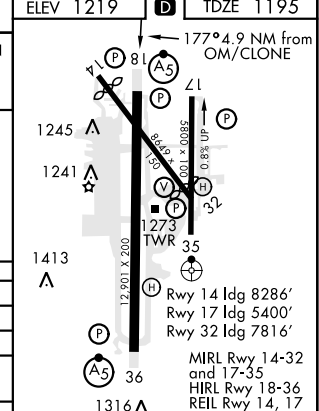
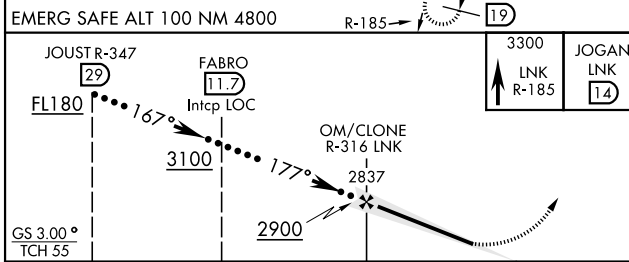
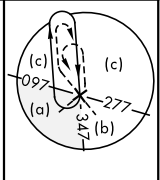
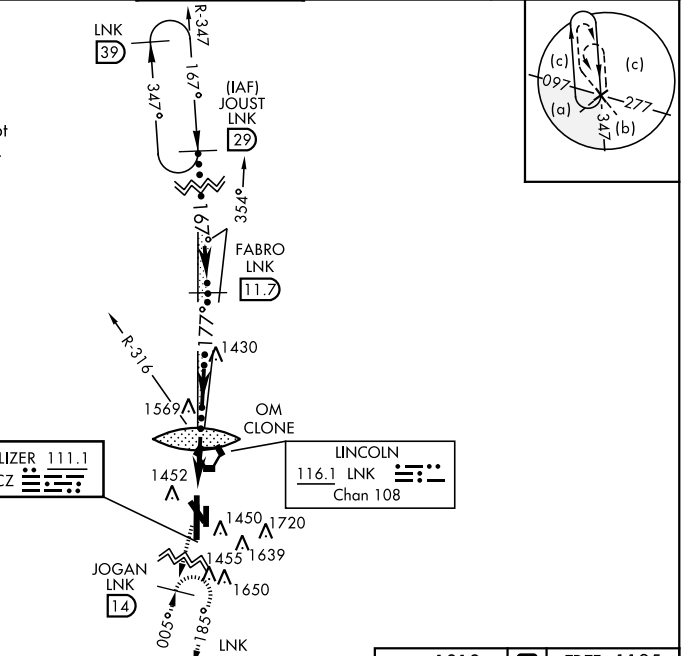
MALS R

MISSED APPROACH: Climb to 3300 on LNK VORTAC R-185 to JOGAN (LNK 14 DME) and hold.

ATIS 118.05 290.9	OMAHA APP CON 124.0 270.3	TOWER * 118.5 253.5	GND CON 121.9 275.8	CLNC DEL 120.7 225.4
-----------------------------	-------------------------------------	-------------------------------	-------------------------------	--------------------------------

*** When ALS inop, increase RVR to 45, vis to 7/8 mile.
† When ALS inop, increase vis to 2 miles.

When local altimeter setting not received use Beatrice altimeter.



CATEGORY	C	D	E
S-ILS 18 *	1395/24	200	(200-1/2)
S-LOC 18 **	1820-1 3/8	625	(700-1 1/8)
CIRCLING	1820-1 3/4 601 (700-1 3/4)	1820-2 601 (700-2)	2040-3 821 (900-3)
BEATRICE ALTIMETER SETTING			
S-ILS 18 ***	1486/24	291	(200-1/2)
S-LOC 18 †	1920-1 5/8	725	(800-1 5/8)
CIRCLING	1920-2 701 (800-2)	1920-2 1/4 701 (800-2 1/4)	2140-3 1/4 921 (1000-3 1/4)

HI-ILS Z or LOC Z RWY 18

NC-2, 13 JUN 2024 to 11 JUL 2024

NC-2, 13 JUN 2024 to 11 JUL 2024