

HI-ILS Z or LOC Z RWY 36

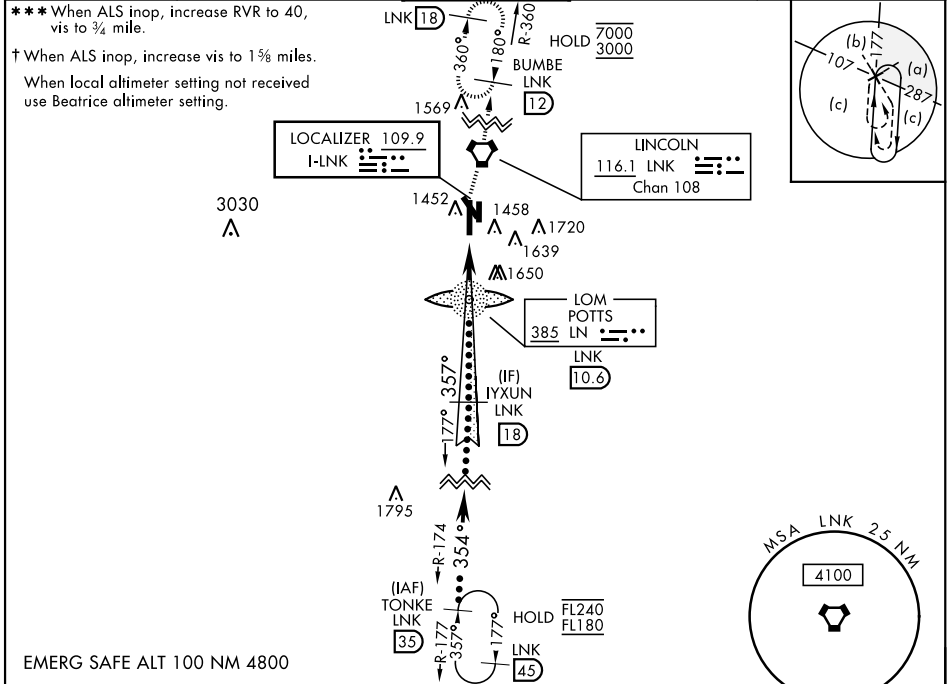
LOC I-LNK 109.9	APCH CRS 357°	Rwy Idg 12,901 TDZE 1175 Arprt Elev 1219	AL-232 [USAF]	LINCOLN (KLNK)
---------------------------	-------------------------	---	---------------	----------------

DME, RADAR required.

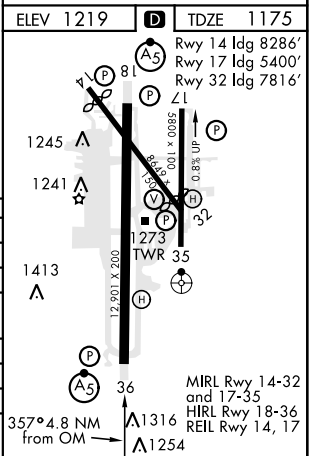
A5
MALS R
MISSED APPROACH: Climb to 1700 then climbing right turn to 3000 direct LNK VORTAC then via LNK R-360 to BUMBE 12 DME and hold.

* When ALS inop, increase RVR to 40, vis to ¼ mile.
** When ALS inop, increase vis to 1 ½ miles.

ATIS 118.05 290.9	OMAHA APP CON 124.0 270.3	TOWER★ 118.5 253.5	GND CON 121.9 275.8	CLNC DEL 120.7 225.4
-----------------------------	-------------------------------------	------------------------------	-------------------------------	--------------------------------



1700	3000	BUMBE LNK 12	VGSI and glidepath not coincident.		TONKE R-174 FL180
VORTAC	JEMVI 7.8	2788	IYXUN Intcp LOC 18	354°	FL180
2800		357°	4000	35°	GS 3.00° TCH 56
2800		2800	4000	35°	GS 3.00° TCH 56
CATEGORY	C		D		E
S-ILS 36*	1375/24		200		(200-½)
S-LOC 36**	1620/45		445		(500-¾)
CIRCLING	1760-1½		1820-2		2040-3
	541 (600-1½)		601 (700-2)		821 (900-3)
BEATRICE ALTIMETER SETTING					
S-ILS 36***	1466/24		291		(300-½)
S-LOC 36†	1720/60		545		(600-1½)
CIRCLING	1820-2		1920-2¼		2140-3¼
	601 (700-2)		701 (800-2¼)		921 (1000-3¼)



NC-2, 13 JUN 2024 to 11 JUL 2024

NC-2, 13 JUN 2024 to 11 JUL 2024

HI-ILS Z or LOC Z RWY 36