

LINCOLN, NEBRASKA

HI-VOR Z or TACAN RWY 18

VORTAC LNK 116.1 Chan 108	APCH CRS 185°	Rwy ldg 12,901 TDZE 1195 Arpt Elev 1219
---	-------------------------	--

AL-232 [USAF]

LINCOLN (KLNK)

DME, RADAR required.

MALSR

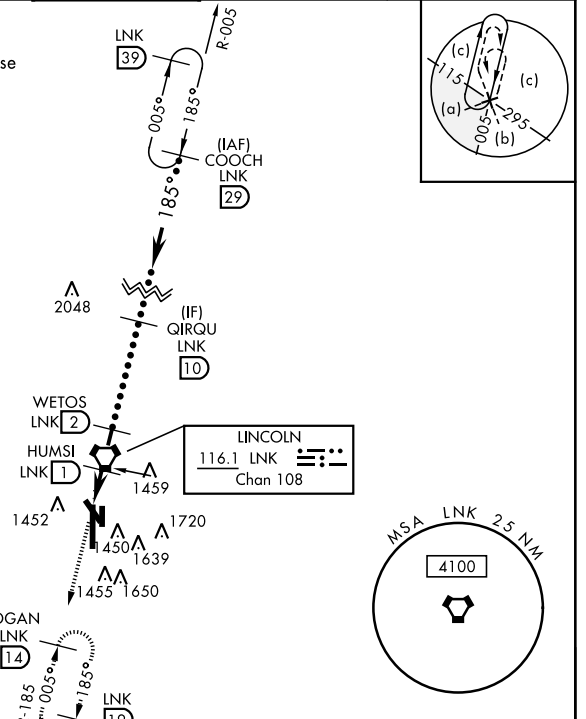


MISSED APPROACH: Climb to 3300 via LNK
VORTAC R-185 to JOGAN 14 DME and hold.

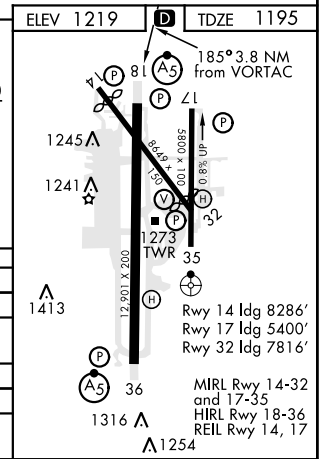
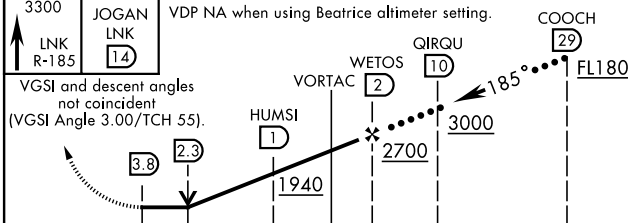
ATIS 118.05 290.9	OMAHA APP CON 124.0 270.3	TOWER★ 118.5 253.5	GND CON 121.9 275.8	CLNC DEL 120.7 225.4
-----------------------------	-------------------------------------	------------------------------	-------------------------------	--------------------------------

Inoperative table does not apply.

When local altimeter setting not received use
Beatrice altimeter setting.



EMERG SAFE ALT 100 NM 4800



CATEGORY	C	D	E
S-18	1760-1½	1720-1½	525 (600-1½)
CIRCLING	541 (600-1½)	601 (700-2)	821 (900-3)
BEATRICE ALTIMETER SETTING			
S-18	1860-1½	1820-1¾	625 (700-1¾)
CIRCLING	641 (700-1½)	701 (800-2¼)	921 (1000-3¼)

LINCOLN, NEBRASKA

40°51'N-96°46'W

LINCOLN (KLNK)

Amdt 5A 04NOV21

HI-VOR Z or TACAN RWY 18

NC-2, 13 JUN 2024 to 11 JUL 2024

NC-2, 13 JUN 2024 to 11 JUL 2024