


| | | |
|---------------------------|------------------------|--|
| LOC I-OCZ 111.1 | APP CRS 177° | Rwy Idg 12901 TDZE 1195 Apt Elev 1219 |
|---------------------------|------------------------|--|

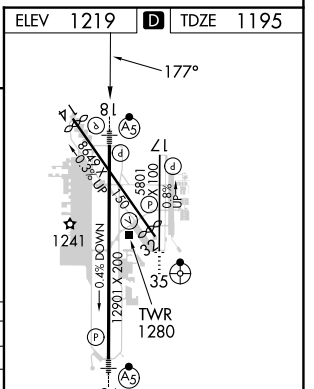
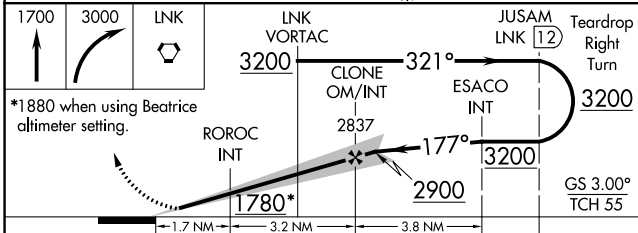
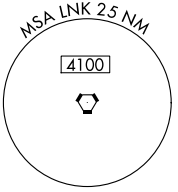
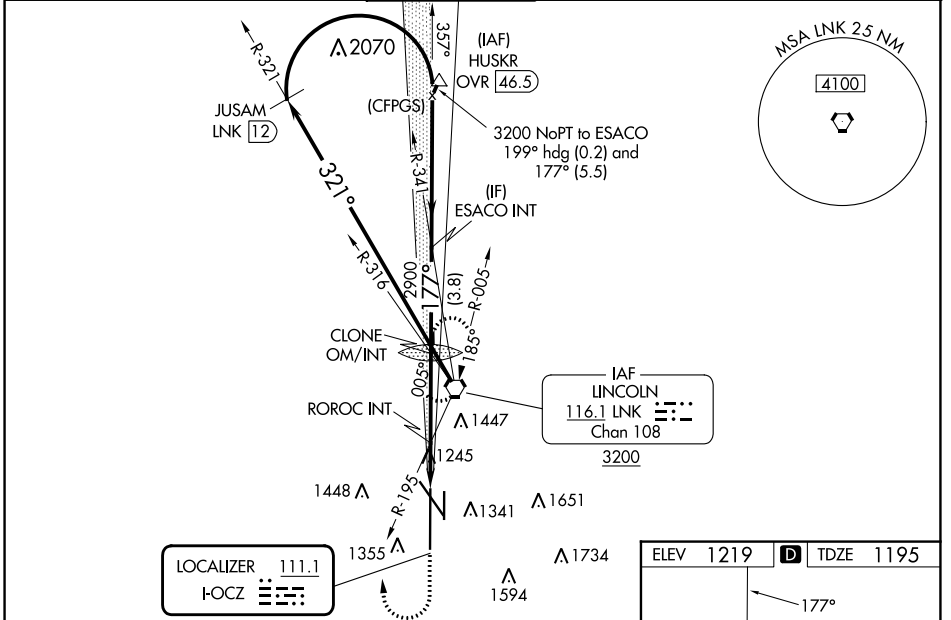
ILS Y or LOC Y RWY 18

LINCOLN (LNK)

⚠ When local altimeter setting not received use Beatrice altimeter setting and increase DA to 1486; and all MDA 100 feet, increase visibility S-LOC 18 Cat C, D, E and Circling Cats C and D 1/4 SM; increase ROROC fix minimums S-LOC 18 Cat C/D/E visibility 3/8 SM and Circling Cats C and D 1/4 SM. For inop ALS, increase S-ILS 18 Cat E visibility to RVR 4000, S-LOC 18 Cat E visibility to 1 3/4 SM, and ROROC fix minimums S-LOC 18 Cat E visibility to 1 1/2 SM. For inop ALS when using Beatrice altimeter setting, increase S-ILS 18 all Cats visibility to RVR 4500, S-LOC 18 Cat E visibility to 2 SM, and ROROC fix minimums S-LOC 18 Cat C/D/E visibility to 1 3/4 SM.
#RVR 1800 authorized with use of FD or AP or HUD to DA.

MALS

MISSED APPROACH:
 Climb to 1700 then climbing right turn to 3000 direct LNK VORTAC and hold.

| | | | | | |
|-----------------------------|-------------------------------------|---|-------------------------------|--------------------------------|-------------------------|
| ATIS 118.05 290.9 | OMAHA APP CON 124.0 270.3 | LINCOLN TOWER * 118.5(CTAF) 253.5 | GND CON 121.9 275.8 | CLNC DEL 120.7 225.4 | UNICOM 122.95 |
|-----------------------------|-------------------------------------|---|-------------------------------|--------------------------------|-------------------------|



| CATEGORY | A | B | C | D | E |
|--|-----------------------|---------------|-----------------|-----------------|-----------------|
| S-ILS 18# | 1395/24 200 (200-1/2) | | | | |
| S-LOC 18 | 1780/24 | 585 (600-1/2) | 1780-1 1/4 | | 585 (600-1 1/4) |
| CIRCLING | 1780-1 | 561 (600-1) | 1820-1 3/4 | 1960-2 1/2 | 2040-3 |
| ROROC FIX MINIMUMS (DUAL VOR RECEIVERS REQUIRED) | | | | | |
| S-LOC 18 | 1720/24 | 525 (600-1/2) | 1720/55 | | 525 (600-1) |
| CIRCLING | 1720-1 | 1760-1 | 1820-1 1/2 | 1960-2 1/4 | 2040-3 |
| | 501 (600-1) | 541 (600-1) | 601 (700-1 1/2) | 741 (800-2 1/4) | 821 (900-3) |

| | | | | | |
|--|------|------|------|------|------|
| HIRL Rwy 18-36 REIL Rwys 14 and 17 MIRL Rwys 14-32 and 17-35 | | | | | |
| FAF to MAP 4.9 NM | | | | | |
| Knots | 60 | 90 | 120 | 150 | 180 |
| Min:Sec | 4:54 | 3:16 | 2:27 | 1:58 | 1:38 |

NC-2, 13 JUN 2024 to 11 JUL 2024

NC-2, 13 JUN 2024 to 11 JUL 2024