

LITTLE ROCK, ARKANSAS

AL-233 (FAA)

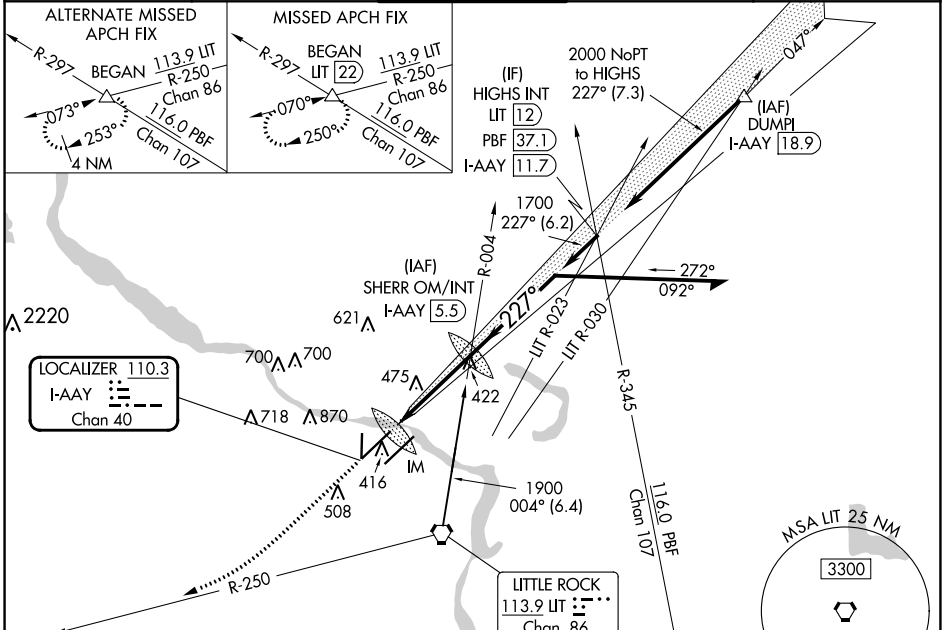
24137

LOC/DME I-AAY 110.3 Chan 40	APP CRS 227°	Rwy Idg TDZE Apt Elev	8273 262 266
--	------------------------	-----------------------------	---

ILS RWY 22R (SA CAT I)
BILL AND HILLARY CLINTON NTL/ADAMS FLD (LIT)

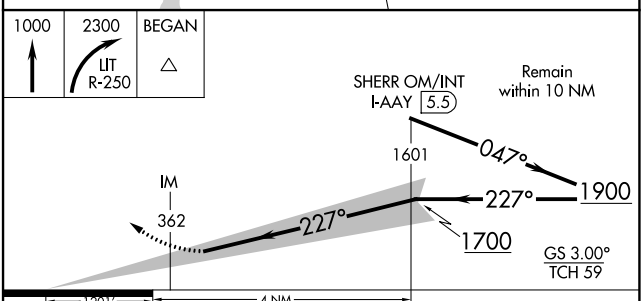
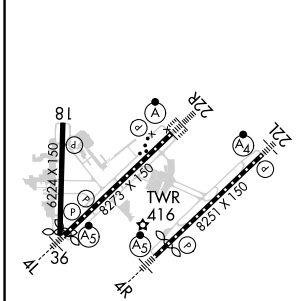
DME required.	ALSF-2	MISSED APPROACH: Climb to 1000 then climbing right turn to 2300 on LIT VORTAC R-250 to BEGAN INT/LIT 22 DME and hold.
Simultaneous approach authorized with Rwy 22L. Requires specific OPSPEC, MSPEC, or LOA approval and use of HUD to DA.		

D-ATIS 125.65	LITTLE ROCK APP CON 135.4 353.6	ADAMS TOWER 118.7 257.8	GND CON 121.9 339.8	CLNC DEL 118.95
-------------------------	---	-----------------------------------	-------------------------------	---------------------------



ELEV 266	D	TDZE 262
----------	----------	----------

Procedure NA for arrival at LIT VORTAC on V305 and V124 southwest bound.



CATEGORY	A	B	C	D
S-ILS-22R	RA 182/14 150 DA 412			

SA CATEGORY I ILS - SPECIAL AIRCREW & AIRCRAFT CERTIFICATION REQUIRED

LITTLE ROCK, ARKANSAS
Amdt 3B 15JUN23

BILL AND HILLARY CLINTON NTL/ADAMS FLD (LIT)
34°44'N-92°13'W
ILS RWY 22R (SA CAT I)

SC-1, 13 JUN 2024 to 11 JUL 2024

SC-1, 13 JUN 2024 to 11 JUL 2024