

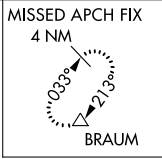
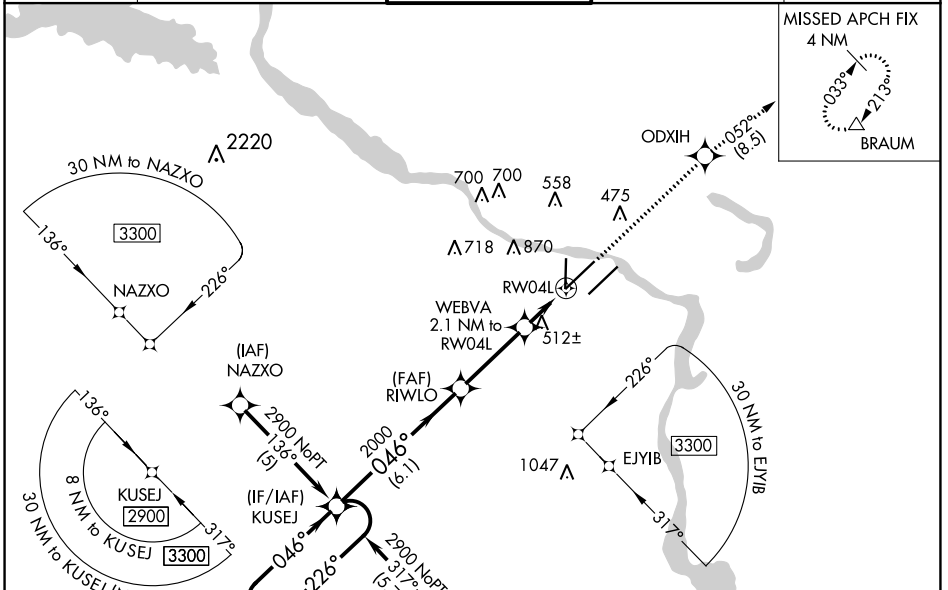
WAAS CH 90411 W04A	APP CRS 046°	Rwy Idg 7976 TDZE 258 Apt Elev 266
--	------------------------	---

RNAV (GPS) RWY 4L

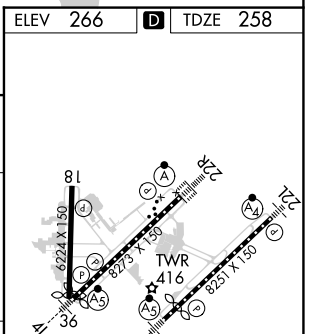
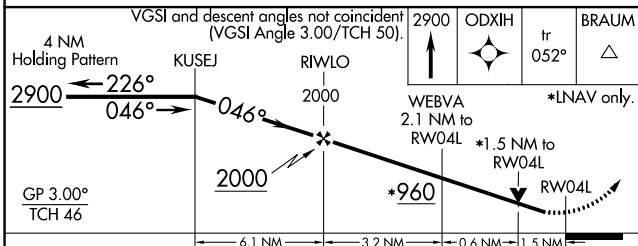
BILL AND HILLARY CLINTON NTL/ADAMS FLD (LIT)

RNP APCH. For uncompensated Baro-VNAV systems, LNAV/VNAV NA below -15°C or above 48°C. Rwy 4L helicopter visibility reduction below 3/4 SM NA. For inop ALS, increase LNAV Cat A and B visibility to RVR 5000. Simultaneous approach authorized. LNAV procedure NA during simultaneous operations. Use of FD or AP required during simultaneous operations.	MALSR 	MISSED APPROACH: Climb to 2900 direct ODXIH and on track 052° to BRAUM and hold.
--	-----------	--

D-ATIS 125.65	LITTLE ROCK APP CON 135.4 353.6	ADAMS TOWER 118.7 257.8	GND CON 121.9 339.8	CLNC DEL 118.95
-------------------------	---	-----------------------------------	-------------------------------	---------------------------



ELEV 266	D TDZE 258
----------	-------------------



CATEGORY	A	B	C	D
LPV DA		544/40	286 (300-3/4)	
LNAV/VNAV DA		824-1 1/2	566 (600-1 1/2)	
LNAV MDA	780/40	522 (600-3/4)	780/55	522 (600-1)
C CIRCLING	820-1 554 (600-1)	1000-1 734 (800-1)	1180-2 3/4 914 (1000-2 3/4)	1180-3 914 (1000-3)

MIRL Rwy 18-36
HIRL Rwy 4R-22L and 4L-22R
TDZ/CL Rwy 22R

SC-1, 13 JUN 2024 to 11 JUL 2024

SC-1, 13 JUN 2024 to 11 JUL 2024