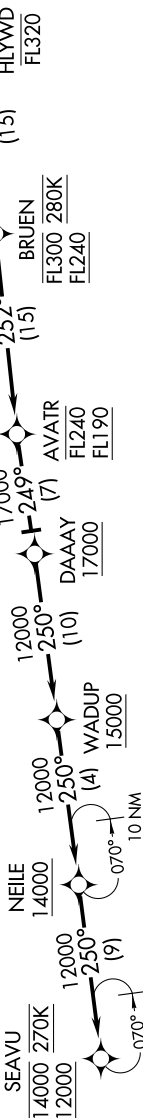


SW-3, 13 JUN 2024 to 11 JUL 2024

SOCAL APP CON
124.05 353.775
D-ATIS ARR
133.8
LOS ANGELES TOWER
(N) 133.9 239.3
(S) 120.95 379.1



ARRIVAL ROUTE DESCRIPTION

From HLYWD on track 251° to cross BRUEN between FL240 and FL300 and at 280K, then on track 252° to cross AVATR between FL190 and FL240, then on track 249° to cross DAAAAY at or above 17000, then on track 250° to cross WADUP at or above 15000, then on track 250° to cross NEILE at or above 14000, then on track 250° to cross SEAVU between 12000 and 14000 and at 270K. Expect ILS or RNAV (RNP) RWY 25L approach.

- NOTE: RADAR required.
- NOTE: RNAV 1.
- NOTE: DME/DME/IRU or GPS required.
- NOTE: Turbojet aircraft only.
- NOTE: Los Angeles landing west traffic.
- NOTE: Expect runway 25L unless otherwise assigned by ATC.
- NOTE: Expect local area altimeter reaching FL230.

LOST COMMUNICATIONS: In the event of lost communication prior to runway assignment proceed on ILS or LOC RWY 25L.

NOTE: Chart not to scale.

SW-3, 13 JUN 2024 to 11 JUL 2024