

LOC/DME I-LAX	APP CRS	Rwy ldg	11095
109.9	251°	TDZE	104
Chan 36		Apt Elev	128

ILS RWY 25L (CAT II & III)

LOS ANGELES INTL (LAX)

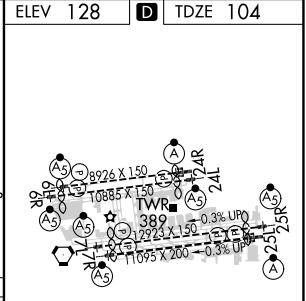
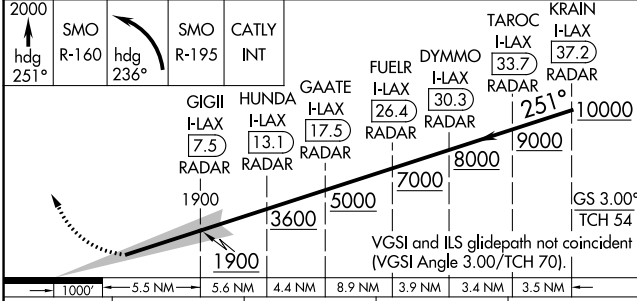
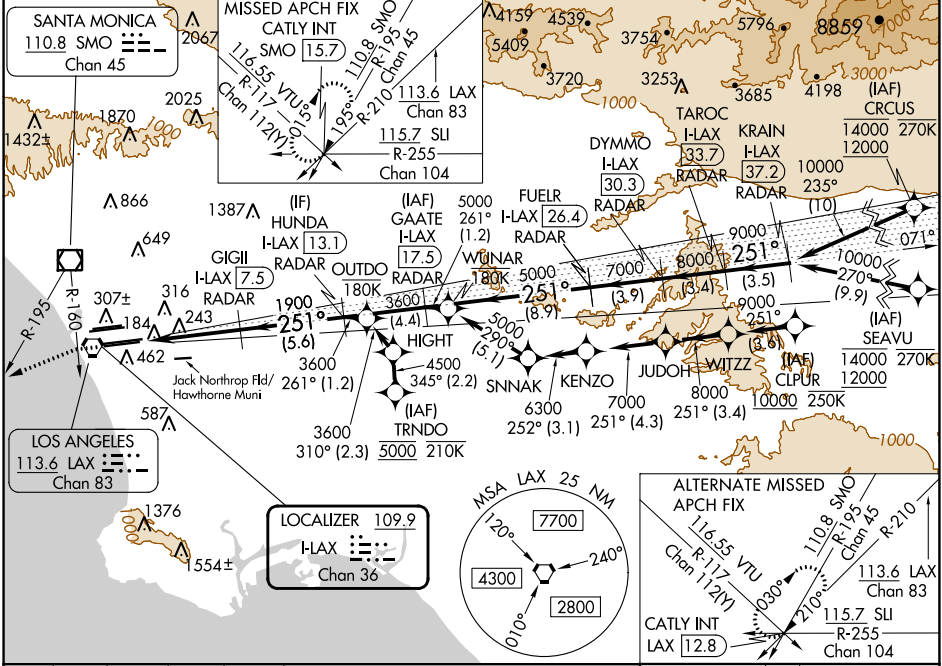
RNP APCH - GPS. From CLIPUR or CRCUS or SEAVU or TRNDO.
DME or RADAR required.

Simultaneous approach authorized.
Simultaneous approach authorized with HHR.



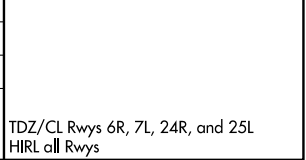
MISSED APPROACH: Climb to 2000 on heading 251° until crossing the SMO R-160 then left turn on heading 236° and on the SMO R-195 to CATLY INT/SMO 15.7 DME and hold.

D-ATIS	SOCAL APP CON		LOS ANGELES TOWER	GND CON	CLNC DEL	CPDLC
ARR 133.8	124.3	363.2	124.9	269.0	120.35	
DEP 135.65	124.5	235.975	128.5	360.7	327.0	
	(225°-044°)	(090°-224°)	(045°-089°)			
			N 133.9	329.3		
			S 120.95	379.1		
			N 121.65	327.0		
			S 121.75	327.0		
			W 121.4	327.0		



CATEGORY	A	B	C	D
S-ILS 25L	CAT II RA 107/12 100 DA 204			
S-ILS 25L	CAT III RVR 06			

CATEGORY II & III ILS - SPECIAL AIRCREW & AIRCRAFT CERTIFICATION REQUIRED



TDZ/CL Rwy 6R, 7L, 24R, and 25L
HIRL all Rwy's

SW-3, 13 JUN 2024 to 11 JUL 2024

SW-3, 13 JUN 2024 to 11 JUL 2024