

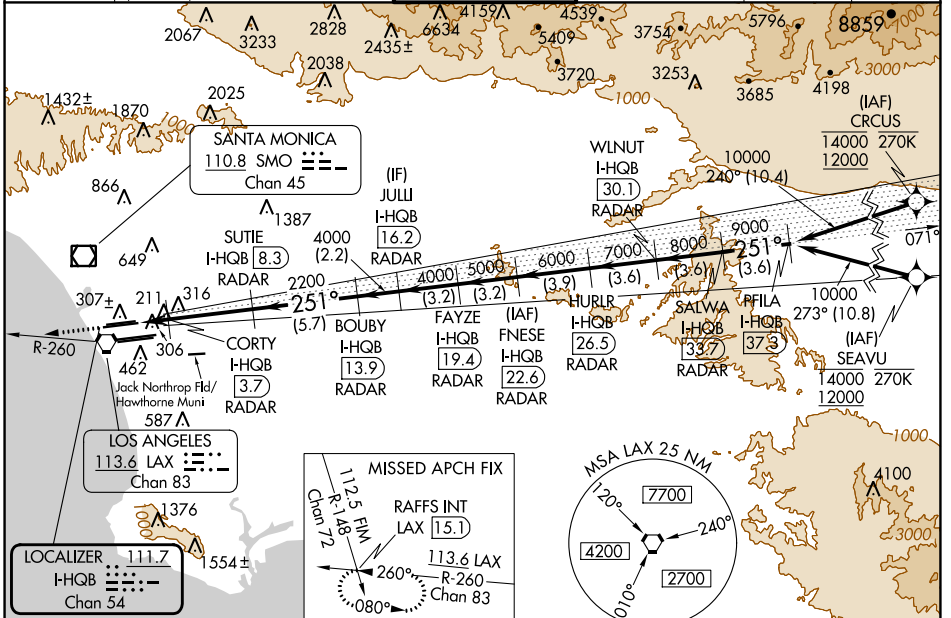
LOC/DME I-HQB 111.7 Chan 54	APP CRS 251°	Rwy Idg TDZE Apt Elev	24L 9483 123 128	24R 8926 122 128
---	------------------------	-----------------------------	--	--

ILS or LOC RWY 24L

LOS ANGELES INTL (LAX)

RNAV 1-GPS or RADAR required for procedure entry. DME or RADAR required. From CRCUS: RNAV 1-GPS required. From SEAVU: RNAV 1-GPS required.		MALSR Rwy 24L 	ALSF-2 Rwy 24R 	MISSED APPROACH: Climb to 2000 on heading 251° and LAX VORTAC R-260 to RAFFS INT/LAX 15.1 DME and hold.
Simultaneous approach authorized with HHR. Inop table does not apply to Sidestep Rwy 24R Cat A and B. Simultaneous approach authorized. LOC procedure NA during simultaneous operations with HHR LOC RWY 25. For inop ALS, increase Sidestep 24R Cat C visibility to 1½SM. For inop ALS, increase S-LOC 24L Cat C/D visibility to RVR 5500. #RVR 1800 authorized with use of FD or AP or HUD to DA.				

D-ATIS ARR 133.8 DEP 135.65	SOCAL APP CON 124.3 363.2 (APCH FM WEST) 124.5 235.975 (225°-044°)	124.9 269.0 (090°-224°) 128.5 360.7 (045°-089°)	LOS ANGELES TOWER N 133.9 239.3 S 120.95 379.1	GND CON N 121.65 327.0 S 121.75 327.0 W 121.4 327.0	CLNC DEL 120.35 327.0	CPDLC
---	--	--	--	---	---	-------



ELEV 128	TDZE 24L 123	TDZE 24R 122			
TDZ/CL Rwy 6L, 7L, 24R, and 25L HIRL all Rwy's FAF to MAP 6.4 NM					
Knots	60	90	120	150	180
Min:Sec	6:24	4:16	3:12	2:34	2:08

2000 hdg 251° *LOC only.		LAX R-260	RAFFS INT	VGSI and ILS glidepath not coincident (VGSI Angle 3.00/TCH 79).				SALWA I-HQB	PFILA I-HQB
740* 2200 1.9 2.9 3.7 8.3 13.9 16.2 19.4 22.6 26.5 30.1 33.7 37.3		CORTY I-HQB	SUTIE I-HQB	BOUBY I-HQB	JULLI I-HQB	FAYZE I-HQB	FNESE I-HQB	HURLR I-HQB	WLNUT I-HQB
1 NM 0.8 4.6 NM 5.7 NM 2.2 NM 3.2 NM 3.2 NM 3.9 NM 3.6 NM 3.6 NM 3.6 NM		CATEGORY A B C D							
S-ILS 24L#		323/24 200 (200-½)							
S-LOC 24L		500/24 377 (400-½)				500/35 377 (400-¾)			
SIDESTEP 24R		500/55 378 (400-1)				500-1½ 378 (400-1½)			

SW-3, 13 JUN 2024 to 11 JUL 2024

SW-3, 13 JUN 2024 to 11 JUL 2024