

LOC/DME I-MKZ	APP CRS	Rwy Idg	7R	7L
<b>109.9</b>	<b>071°</b>		<b>11095</b>	<b>11259</b>
Chan <b>36</b>		TDZE	<b>128</b>	<b>128</b>
		Apt Elev	<b>128</b>	<b>128</b>

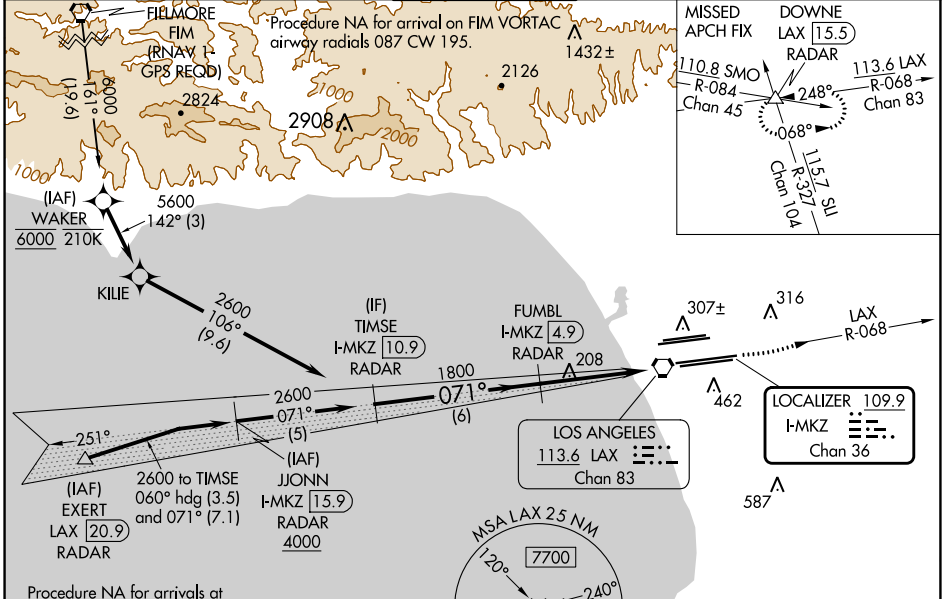
# ILS or LOC RWY 7R

LOS ANGELES INTL (LAX)

Simultaneous approach authorized. DME or RADAR required. Inop table does not apply to Sidestep Rwy 7L Cats A and B. # RVR 1800 authorized with use of FD or AP or HUD to DA.

MALS Rwy 7R	MALS Rwy 7L	MISSED APPROACH: Climb to 3000 on LAX VORTAC R-068 to DOWNE INT/ LAX 15.5 DME/RADAR and hold.
-------------	-------------	---

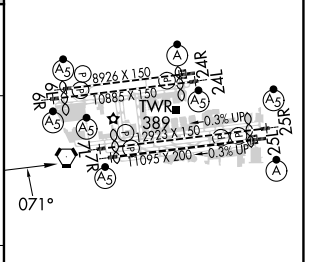
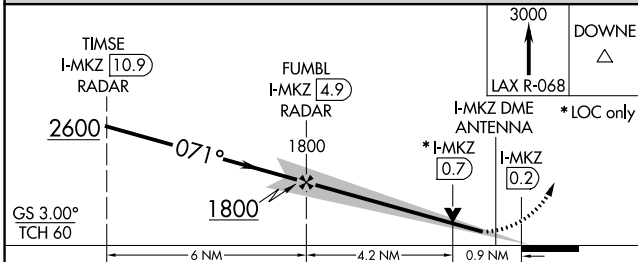
D-ATIS ARR <b>133.8</b> DEP <b>135.65</b>	SOCAL APP CON <b>124.3 363.2</b> (APCH FM WEST) <b>124.5 235.975</b> (225°-044°)	<b>124.9 269.0</b> (090°-224°) <b>128.5 360.7</b> (045°-089°)	LOS ANGELES TOWER <b>N 133.9 239.3</b> <b>S 120.95 379.1</b>	GND CON <b>N 121.65 327.0</b> <b>S 121.75 327.0</b> <b>W 121.4 327.0</b>	CLNC DEL <b>120.35</b> <b>327.0</b>	CPDLC
---	--	--	--	---	---	-------



SW-3, 13 JUN 2024 to 11 JUL 2024

SW-3, 13 JUN 2024 to 11 JUL 2024

ELEV 128	TDZE 7R 128	TDZE 7L 128
----------	-------------	-------------



CATEGORY	A	B	C	D
S-ILS 7R#	328/24 200 (200-1/2)			
S-LOC 7R	460/24	332 (400-1/2)	460/26	332 (400-1/2)
SIDESTEP 7L	520/55 392 (400-1)		520-1 1/2 392 (400-1/2)	
TDZ/CL Rwy 6R, 7L, 24R, and 25L HIRL all Rwy				
FAF to MAP 5.1 NM				
Knots	60	90	120	150 180
Min:Sec	5:06	3:24	2:33	2:02 1:42