

SW-3, 13 JUN 2024 to 11 JUL 2024

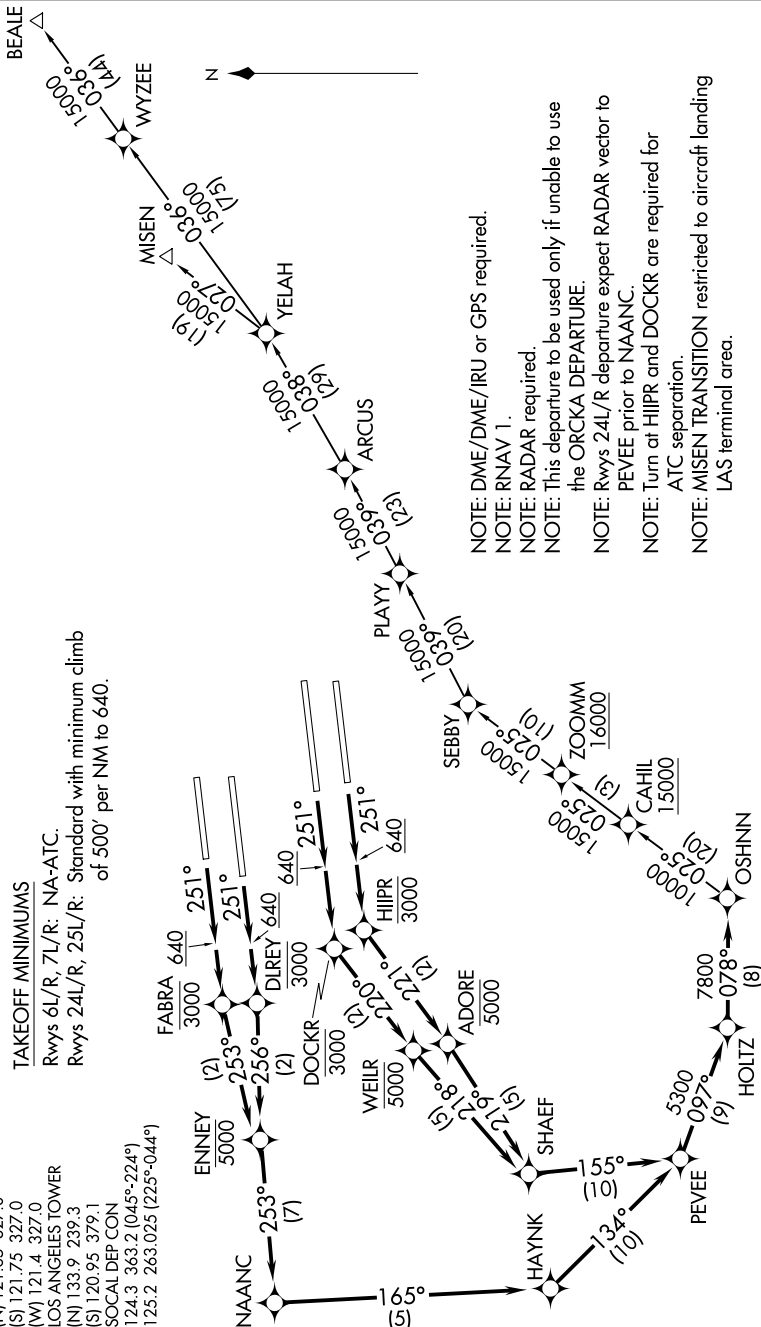
**TOP ALTITUDE:
17000**

TAKEOFF MINIMUMS

Rwys 6L/R, 7L/R: NA-ATC.

Rwys 24L/R, 25L/R: Standard with minimum climb of 500' per NM to 640.

- D-ATIS DEP 135.65
- CINC DEL 120.35 327.0
- CPDLC 120.35 327.0
- GND CON (N) 121.65 327.0
- (S) 121.75 327.0
- (W) 121.4 327.0
- LOS ANGELES TOWER (N) 133.9 239.3
- (S) 120.95 379.1
- SOCAL DEP CON 124.3 363.2 (045°-224°)
- 125.2 263.025 (225°-044°)



NOTE: DME/DME/IRU or GPS required.

NOTE: RNAV 1.

NOTE: RADAR required.

NOTE: This departure to be used only if unable to use the ORCKA DEPARTURE.

NOTE: Rwys 24L/R departure expect RADAR vector to PEVEE prior to NAANC.

NOTE: Turn at HJIPR and DOCKR are required for ATC separation.

NOTE: MISEN TRANSITION restricted to aircraft landing LAS terminal area.

(NARRATIVE ON FOLLOWING PAGE)

NOTE: Chart not to scale.

SW-3, 13 JUN 2024 to 11 JUL 2024