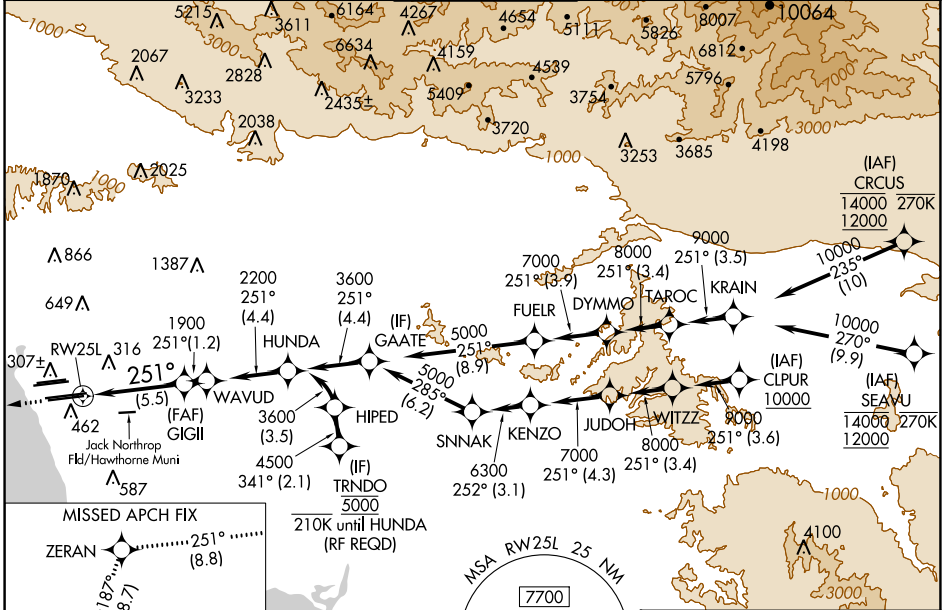


APP CRS	Rwy Idg	11095
251°	TDZE	104
	Apf Elev	128

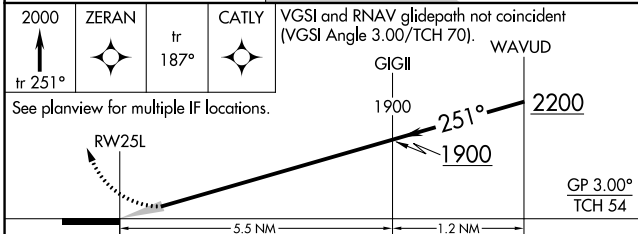
RNAV (RNP) Z RWY 25L

LOS ANGELES INTL (LAX)

RNP AR APCH.		GPS required. For uncompensated Baro-VNAV systems, procedure NA below 5°C or above 54°C. Simultaneous approach authorized. Simultaneous approach authorized with HHR.		ALSF-2	MISSED APPROACH: Climb to 2000 on track 251° to ZERAN and on track 187° to CATLY and hold.		
D-ATIS	SOCAL APP CON		LOS ANGELES TOWER	GND CON		CINC DEL	CPDLC
ARR 133.8	124.3 363.2	124.9 269.0	N 133.9 239.3	N 121.65 327.0	S 121.75 327.0	120.35 327.0	
DEP 135.65	124.5 235.975	128.5 360.7	S 120.95 379.1	W 121.4 327.0			

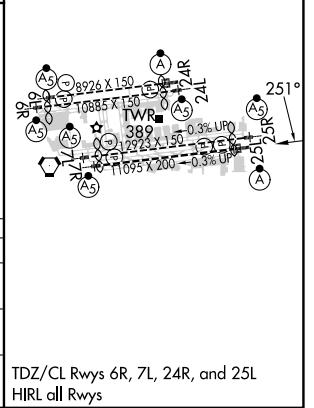


ELEV 128	D TDZE 104
----------	-------------------



CATEGORY	A	B	C	D
RNP 0.15 DA		445/30	341 (400-5%)	
RNP 0.30 DA		543/50	439 (500-1)	

AUTHORIZATION REQUIRED



TDZ/CL Rwws 6R, 7L, 24R, and 25L
HIRL all Rwws