

APP CRS	Rwy Idg	<b>11134</b>
<b>251°</b>	TDZE	<b>104</b>
	Apt Elev	<b>128</b>

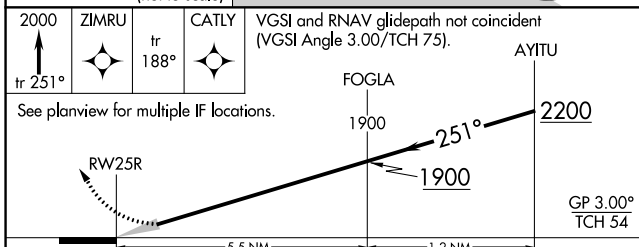
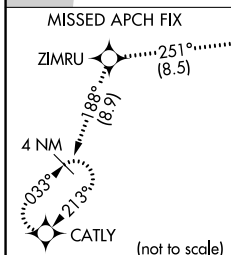
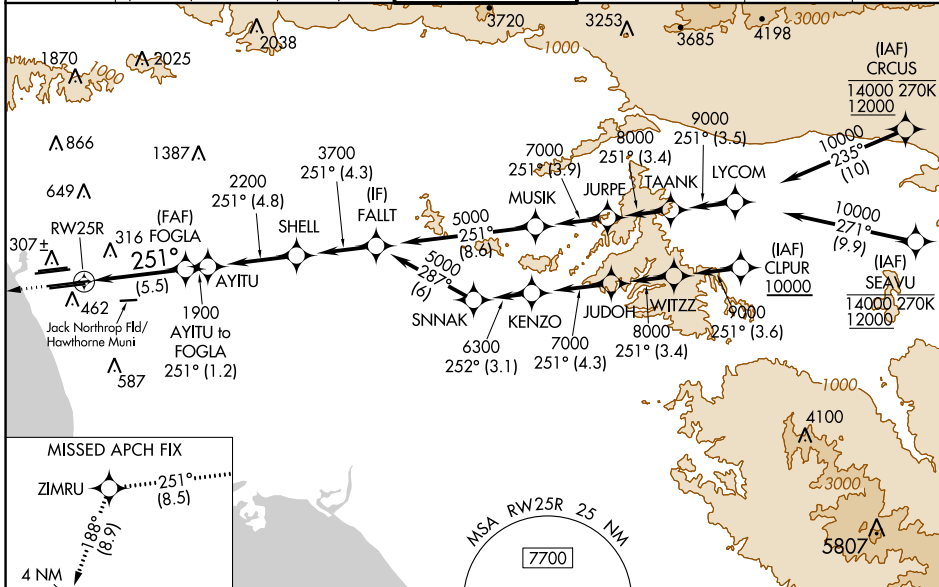
# RNAV (RNP) Z RWY 25R

LOS ANGELES INTL (LAX)

For uncompensated Baro-VNAV systems, procedure NA below 5°C (41°F) or above 54°C (130°F). Simultaneous approach authorized. Simultaneous approach authorized with HHR. GPS required. For inop ALS, increase RNP 0.11 all Cats visibility to RVR 6000.

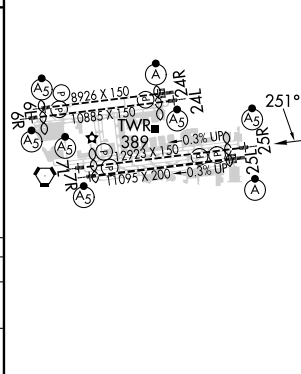
MALSR	MISSED APPROACH: Climb to 2000 on track 251° to ZIMRU and track 188° to CATLY and hold.
-------	---

D-ATIS	SOCL APP CON	LOS ANGELES TOWER	GND CON	CLNC DEL	CPDLC
ARR <b>133.8</b>	<b>124.3 363.2</b> (APCH FM WEST)	<b>124.9 269.0</b> (090°-224°)	<b>N 121.65 327.0</b> <b>S 121.75 327.0</b> <b>W 121.4 327.0</b>	<b>120.35</b> <b>327.0</b>	
DEP <b>135.65</b>	<b>124.5 235.975</b> (225°-044°)	<b>128.5 360.7</b> (045°-089°)			



CATEGORY	A	B	C	D
RNP 0.11 DA		453/40	349 (400-¾)	
RNP 0.30 DA		544/50	440 (500-1)	

ELEV 128	TDZE 104
----------	----------



**AUTHORIZATION REQUIRED**

SW-3, 13 JUN 2024 to 11 JUL 2024

SW-3, 13 JUN 2024 to 11 JUL 2024

TDZ/CL Rwy's 6R, 7L, 24R, and 25L  
HIRL all Rwy's