


| | | |
|-------------|----------|-------------|
| APP CRS | Rwy Idg | 8566 |
| 071° | TDZE | 119 |
| | Apt Elev | 128 |

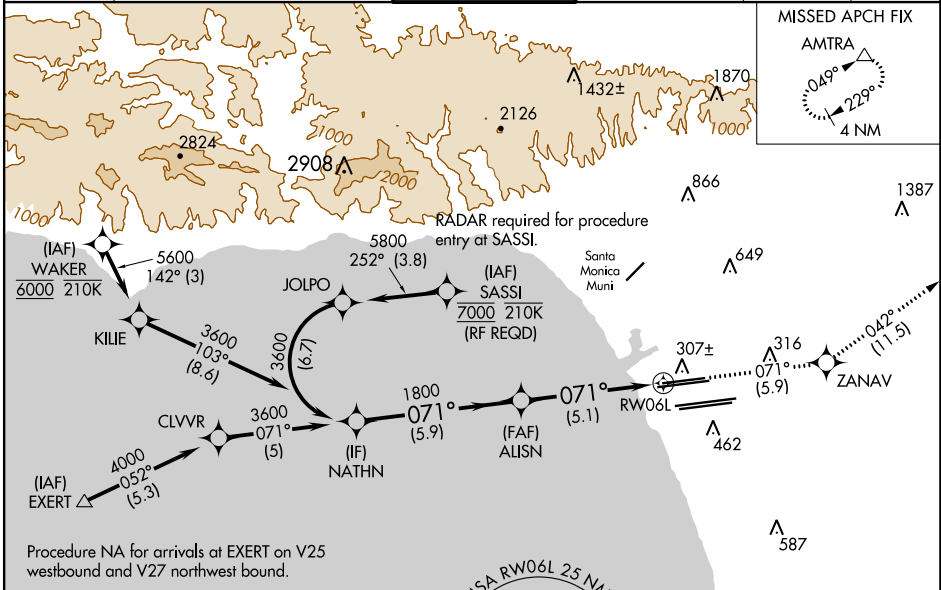
RNAV (RNP) Z RWY 6L

LOS ANGELES INTL (LAX)

▽ For uncompensated Baro-VNAV systems, procedure NA below 5°C (41°F) or above 54°C (130°F). Simultaneous approach authorized. GPS required. For inop MALSR, increase RNP 0.30 all Cats visibility to RVR 6000.

MALSR

MISSED APPROACH: Climb to 3000 on track 071° to ZANAV and on track 042° to AMTRA and hold.

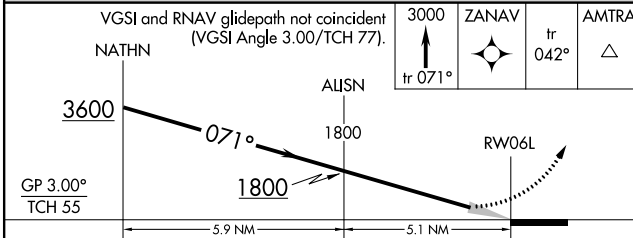
| | | | | | |
|-------------------|--------------------------------------|-----------------------------------|--|-------------------------------|-------|
| D-ATIS | SOCAL APP CON | LOS ANGELES TOWER | GND CON | CLNC DEL | CPDLC |
| ARR 133.8 | 124.3 363.2 (APCH FM WEST) | 124.9 269.0 (090°-224°) | N 121.65 327.0 S 121.75 327.0 W 121.4 327.0 | 120.35 327.0 | |
| DEF 135.65 | 124.5 235.975 (225°-044°) | 128.5 360.7 (045°-089°) | | | |



SW-3, 13 JUN 2024 to 11 JUL 2024

SW-3, 13 JUN 2024 to 11 JUL 2024

| | |
|----------|-------------------|
| ELEV 128 | D TDZE 119 |
|----------|-------------------|



| | | | | |
|-------------|---|--------|-------------|---|
| CATEGORY | A | B | C | D |
| RNP 0.30 DA | | 484/40 | 365 (400-¾) | |

AUTHORIZATION REQUIRED

TDZ/CL Rwy's 6R, 7L, 24R, and 25L
 HIRL all Rwy's