

APP CRS <b>071°</b>	Rwy Idg <b>11259</b> TDZE <b>128</b> Apt Elev <b>128</b>
------------------------	--

# RNAV (RNP) Z RWY 7L

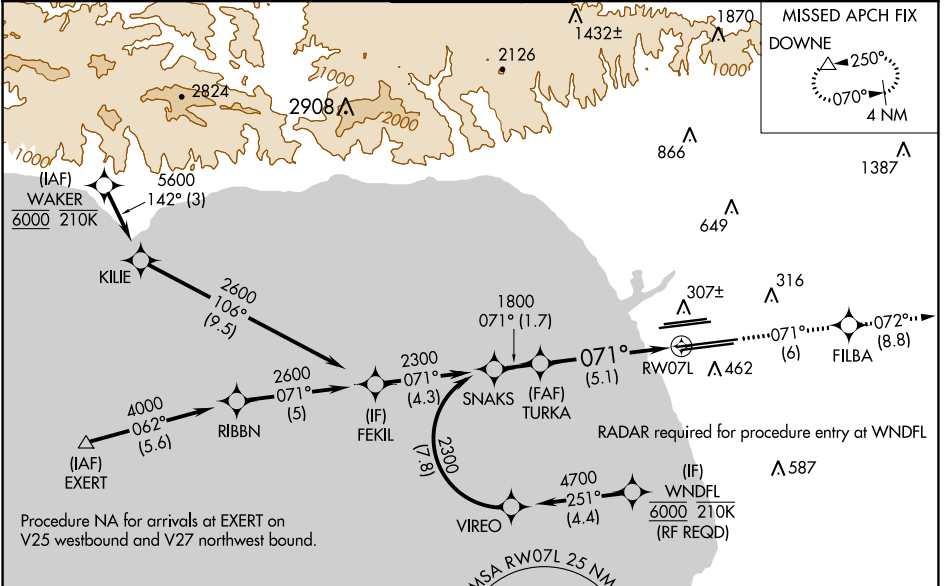
LOS ANGELES INTL (LAX)

**▽** For uncompensated Baro-VNAV systems, procedure NA below 5°C (41°F) or above 54°C (130°F). GPS required. Simultaneous approach authorized. For inop ALS, increase RNP 0.11 all Cats visibility to RVR 5000 and RNP 0.30 all Cats visibility to RVR 6000.

**MALSR**

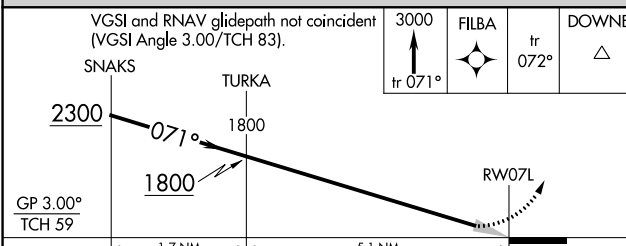
**MISSED APPROACH:** Climb to 3000 on track 071° to FILBA and on track 072° to DOWNE and hold.

D-ATIS ARR <b>133.8</b> DEP <b>135.65</b>	<b>SOCAL APP CON</b> 124.3 363.2 124.9 269.0 124.5 235.975 128.5 360.7 (225°-044°) (090°-224°) (045°-089°)	<b>LOS ANGELES TOWER</b> N <b>133.9 239.3</b> S <b>120.95 379.1</b>	<b>GND CON</b> N <b>121.65 327.0</b> S <b>121.75 327.0</b> W <b>121.4 327.0</b>	CLNC DEL <b>120.35</b> <b>327.0</b>	CPDLC
---	---	---	--	---	-------



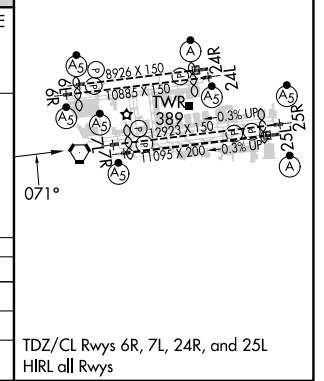
Procedure NA for arrivals at EXERT on V25 westbound and V27 northwest bound.

ELEV 128	<b>D</b> TDZE 128
----------	-------------------



CATEGORY	A	B	C	D
RNP 0.11 DA		441/24	313 (400-½)	
RNP 0.30 DA		485/40	357 (400-¾)	

**AUTHORIZATION REQUIRED**



SW-3, 13 JUN 2024 to 11 JUL 2024

SW-3, 13 JUN 2024 to 11 JUL 2024