


WAAS CH 82507 W06A	APP CRS 071°	Rwy Idg 8566 TDZE 119 Apt Elev 128
--	------------------------	---

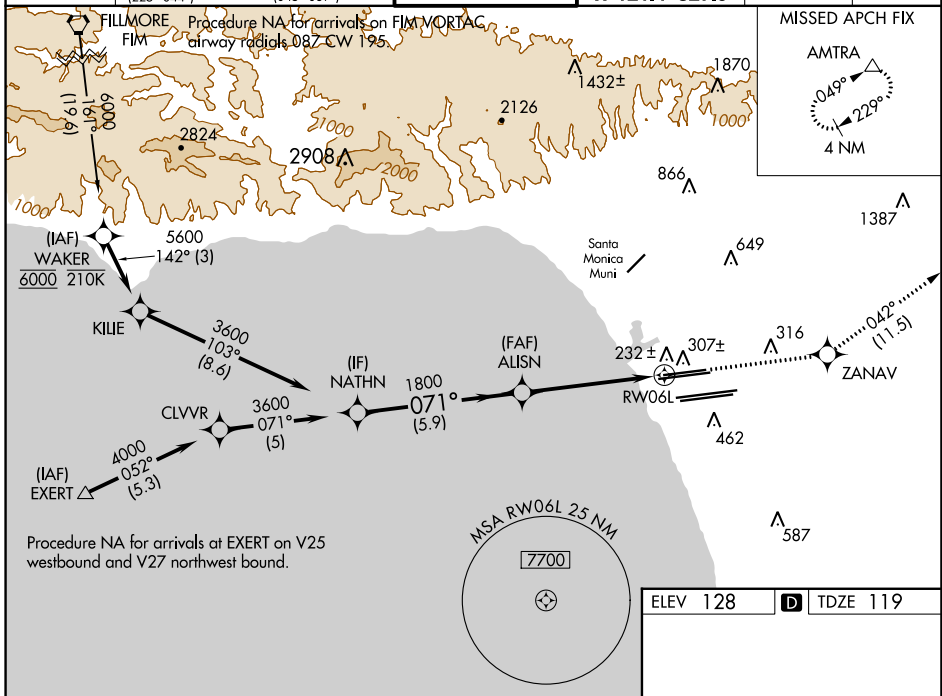
RNAV (GPS) Y RWY 6L

LOS ANGELES INTL (LAX)

▼ For uncompensated Baro-VNAV systems, LNAV/VNAV NA below 5°C (41°F) or above 54°C (130°F). DME/DME RNP-0.3 NA. LNAV procedure NA during simultaneous operations. Use of FD or AP providing RNAV track guidance required during simultaneous operations. Simultaneous approach authorized.

MALSR  MISSED APPROACH: Climb to 3000 direct ZANAV and track 042° to AMTRA and hold.

D-ATIS ARR 133.8 DEP 135.65	SOCL APP CON 124.3 363.2 (APCH FM WEST) 124.5 235.975 (223°-044°)	124.9 269.0 (090°-224°) 128.5 360.7 (043°-089°)	LOS ANGELES TOWER N 133.9 239.3 S 120.95 379.1	GND CON N 121.65 327.0 S 121.75 327.0 W 121.4 327.0	CLNC DEL 120.35 327.0	CPDLC
---	---	--	--	---	---	-------



SW-3, 13 JUN 2024 to 11 JUL 2024

SW-3, 13 JUN 2024 to 11 JUL 2024

ELEV 128		D TDZE 119	
VGSi and RNAV glidepath not coincident (VGSi Angle 3.00/TCH 55). GP 3.00° TCH 55 NATHN 3600 071° 1800 ALISN 1800 RW06L 1 NM * 1 NM to RW06L * INAV only AMTRA 071° ZANAV tr 042° 3000 389 0.3% UP 2924 X 150 0.3% UP 10885 X 150 8926 X 150 11695 X 200 -0.3% UP 25K			
CATEGORY	A	B	C
LPV DA		369/24	250 (300-½)
LNAV/VNAV DA		411/24	292 (300-½)
LNAV MDA	500/24	381 (400-½)	500/35 381 (400-¾)
TDZ/CL Rwy 6R, 7L, 24R, and 25L HIRL all Rwy's			