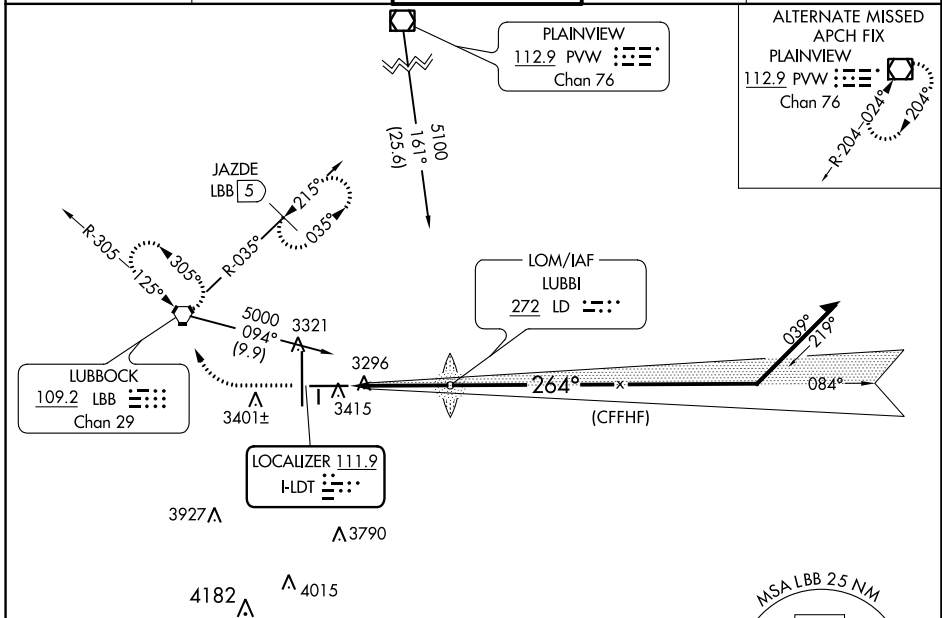


LOC IDLT 111.9	APP CRS 264°	Rwy Idg TDZE Apt Elev	8003 3255 3282
--------------------------	------------------------	-----------------------------	---

ILS or LOC RWY 26
LUBBOCK PRESTON SMITH INTL (LBB)

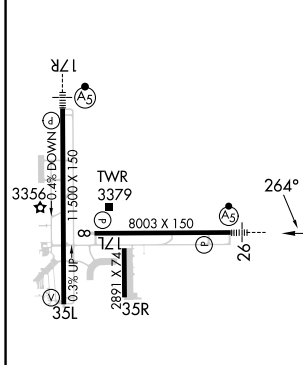
<p>▼ For inop MALSR, increase S-ILS 26 Cat E visibility to RVR 4000 and increase S-LOC 26 Cat C/D/E visibility to RVR 4500. ▲ #RVR 1800 authorized with use of FD or AP or HUD to DA.</p>	<p>MALSR</p>	<p>MISSED APPROACH: Climb to 3800 then climbing right turn to 4800 direct LBB VORTAC and hold (TACAN aircraft climb to 3800 then climbing right turn to 5100 on heading 300° and on LBB VORTAC R-035 to JAZDE/LBB 5 DME and hold northeast left turn 215° inbound).</p>
---	--------------	---

ATIS 125.3 270.275	LUBBOCK APP CON 119.2 351.8	LUBBOCK TOWER 120.5 239.3	GND CON 121.9 348.6	CLNC DEL 125.8 281.55
------------------------------	---------------------------------------	-------------------------------------	-------------------------------	---------------------------------



ALTERNATE MISSED APCH FIX
PLAINVIEW
112.9 PWV
Chan 76

ELEV 3282	D	TDZE 3255
-----------	----------	-----------



ADF OR RADAR REQUIRED

REIL Rwy 8
HIRL Rwy 8-26 and 17R-35L
FAF to MAP 3.7 NM

3800	4800	LBB
↑	↻	⬡

Remain within 15 NM

084° 4700
264° 4500
GS 3.00°
TCH 52

REIL Rwy 8	35L	35R	26	264	4700	4500	4477	3.7 NM	GS 3.00°	TCH 52
FAF to MAP 3.7 NM										
Knots	60	90	120	150	180					
Min:Sec	3:42	2:28	1:51	1:29	1:14					
☑ CIRCLING	3720-1 438 (500-1)	3740-1 458 (500-1)	3880-1½ 598 (600-1½)	3940-2 658 (700-2)	4100-3 818 (900-3)					

SC-2, 13 JUN 2024 to 11 JUL 2024

SC-2, 13 JUN 2024 to 11 JUL 2024