

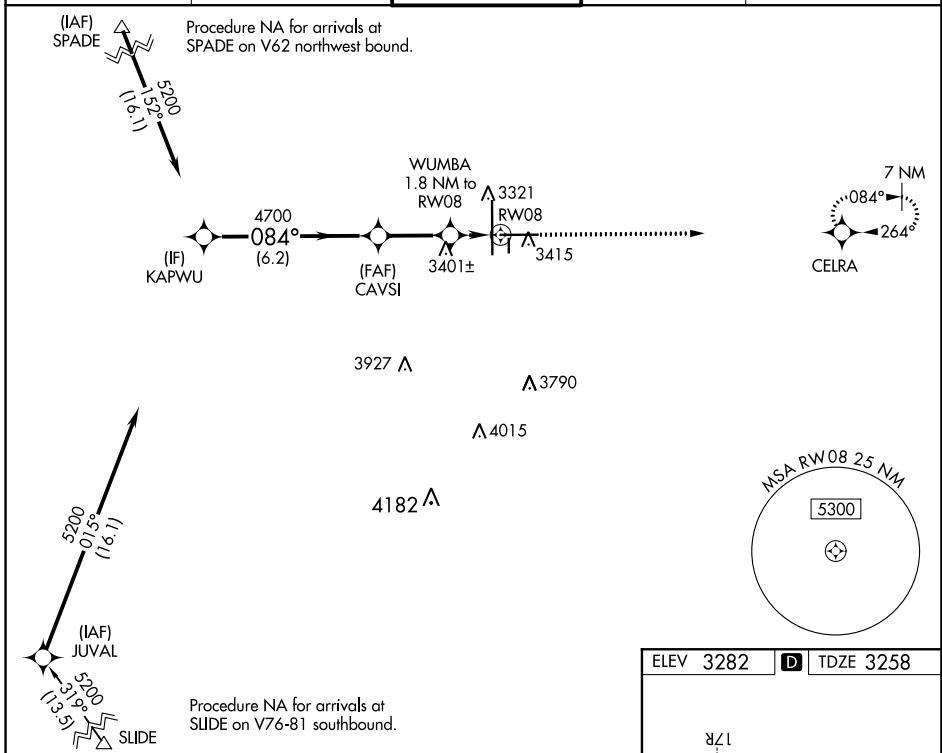
WAAS CH <b>97327</b> <b>W08A</b>	APP CRS <b>084°</b>	Rwy Idg TDZE Apt Elev	<b>8003</b> <b>3258</b> <b>3282</b>
--	------------------------	-----------------------------	---

# RNAV (GPS) RWY 8

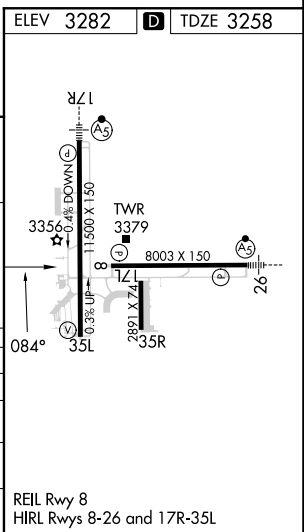
LUBBOCK PRESTON SMITH INTL (LBB)

RNP APCH.	MISSED APPROACH: Climb to 5000 direct CELRA and hold.
-----------	---

ATIS <b>125.3 270.275</b>	LUBBOCK APP CON <b>119.2 351.8</b>	LUBBOCK TOWER <b>120.5 239.3</b>	GND CON <b>121.9 348.6</b>	CLNC DEL <b>125.8 281.55</b>
------------------------------	---------------------------------------	-------------------------------------	-------------------------------	---------------------------------



KAPWU	5200	084°	4700	CAVSI	WUMBA 1.8 NM to RWY 8	*1 NM to RWY 8	RWY 8	*LNAV only.	5000	CELRA
	GP 3.00° TCH 50								*3880	
6.2 NM		2.6 NM		0.8 NM		1 NM				
CATEGORY	A	B	C	D	E					
LPV DA	3458- <sup>3</sup> / <sub>4</sub>			200 (200- <sup>3</sup> / <sub>4</sub> )						
LNAY/VNAV DA	3544- <sup>7</sup> / <sub>8</sub>			286 (300- <sup>7</sup> / <sub>8</sub> )						
LNAY MDA	3640-1		382 (400-1)		3640- <sup>1</sup> / <sub>8</sub>		382 (400- <sup>1</sup> / <sub>8</sub> )			
CIRCLING	3720-1		3740-1		3880- <sup>1</sup> / <sub>2</sub>		3940-2		4100-3	
	438 (500-1)		458 (500-1)		598 (600- <sup>1</sup> / <sub>2</sub> )		658 (700-2)		818 (900-3)	



SC-2, 13 JUN 2024 to 11 JUL 2024

SC-2, 13 JUN 2024 to 11 JUL 2024