

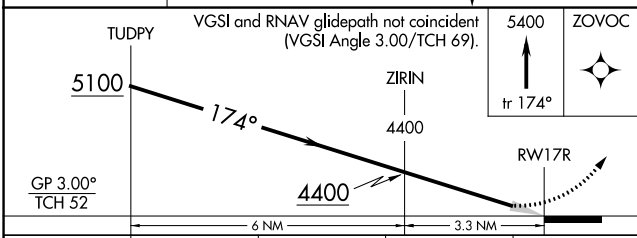
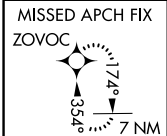
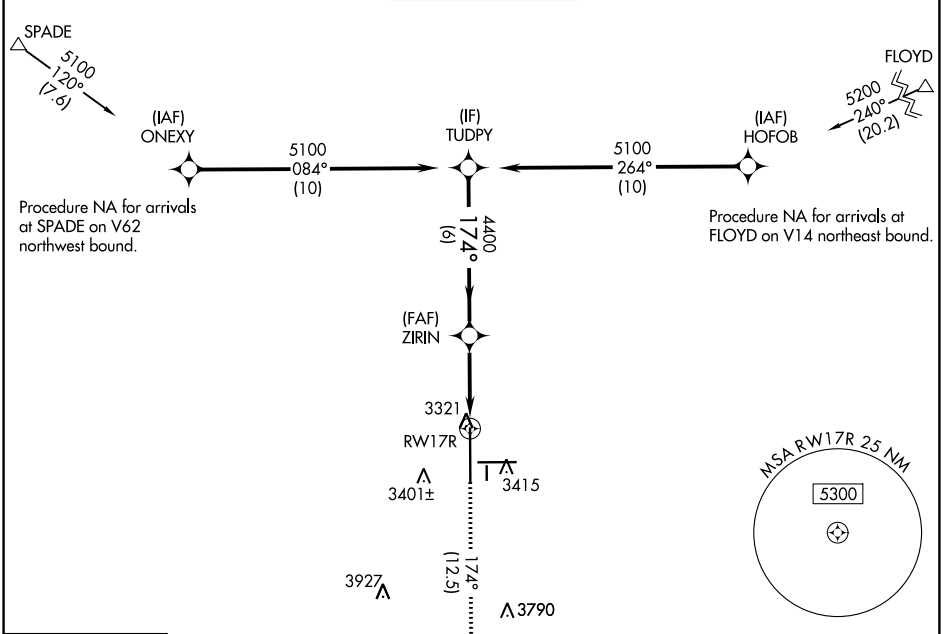
APP CRS 174°	Rwy Idg 11500
	TDZE 3282
	Apt Elev 3282

RNAV (RNP) Z RWY 17R

LUBBOCK PRESTON SMITH INTL (LBB)

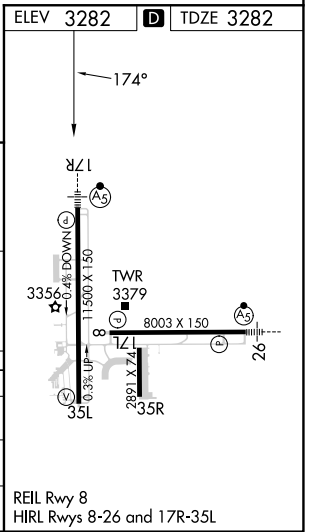
RNP AR APCH. ▼ For uncompensated Baro-VNAV systems, procedure NA below -12°C or above 51°C. For inop ALS, increase RNP 0.16 all Cats visibility to RVR 4500 and increase RNP 0.30 all Cats visibility to RVR 6000.	MALSRL 	MISSED APPROACH: Climb to 5400 on track 174° to ZOVOC and hold.
---	------------	---

ATIS 125.3 270.275	LUBBOCK APP CON 119.2 351.8	LUBBOCK TOWER 120.5 239.3	GND CON 121.9 348.6	CLNC DEL 125.8 281.55
------------------------------	---------------------------------------	-------------------------------------	-------------------------------	---------------------------------



CATEGORY	A	B	C	D
RNP 0.16 DA		3549/24	267 (300-1/2)	
RNP 0.30 DA		3639/40	357 (400-3/4)	

AUTHORIZATION REQUIRED



SC-2, 13 JUN 2024 to 11 JUL 2024

SC-2, 13 JUN 2024 to 11 JUL 2024