

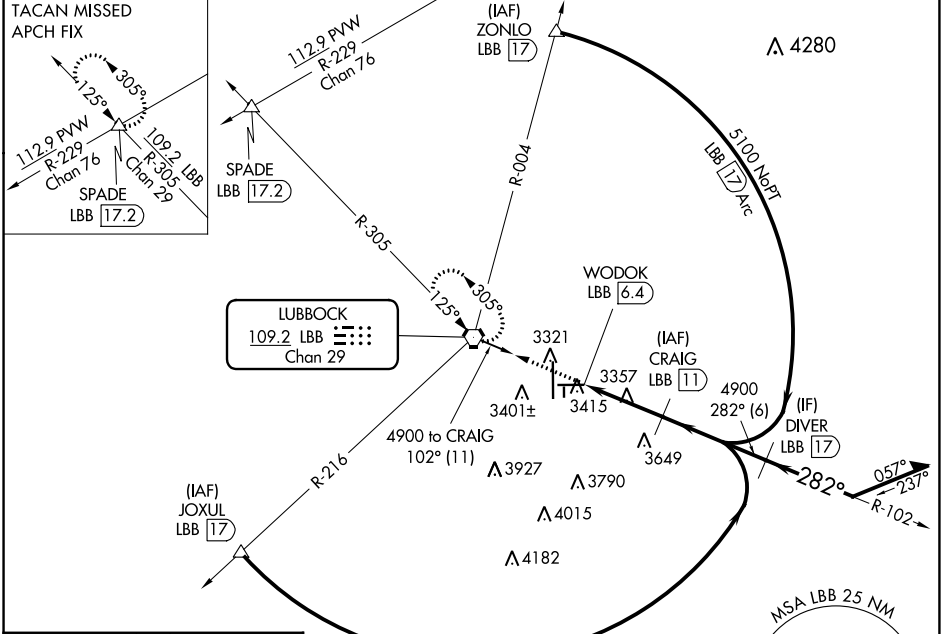
VORTAC LBB 109.2 Chan 29	APP CRS 282°	Rwy ldg TDZE Apt Elev 8003 3256 3282
---------------------------------------	------------------------	--

VOR/DME or TACAN RWY 26

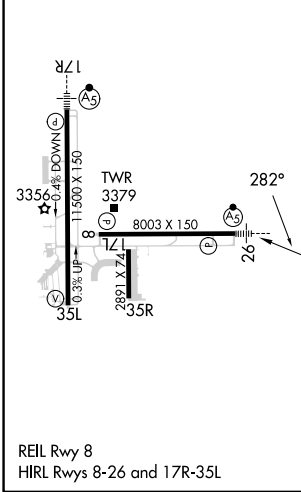
LUBBOCK PRESTON SMITH INTL (LBB)

Inop table does not apply.	MALSR	MISSED APPROACH: Climb to 5000 direct LBB VORTAC and hold (TACAN aircraft continue climb to 5100 on LBB R-305 to SPADE INT/17.2 DME and hold NW, left turn 125° inbound).
----------------------------	-------	---

ATIS 125.3 270.275	LUBBOCK APP CON 119.2 351.8	LUBBOCK TOWER 120.5 239.3	GND CON 121.9 348.6	CLNC DEL 125.8 281.55
------------------------------	---------------------------------------	-------------------------------------	-------------------------------	---------------------------------



ELEV 3282	D TDZE 3256
-----------	--------------------



5000	LBB	CRAIG LBB (11)	Remain within 15 NM		
WODOK LBB (6.4)	LBB (7.6)	4900	102°		
1.2 NM	3.4 NM	3.28° TCH 50	282°		
REIL Rwy 8	HIRL Rwy 8-26 and 17R-35L				
CATEGORY	A	B	C	D	E
S-26	3680/55	424 (400-1)	3680-1¼	424 (400-1¼)	
C CIRCLING	3720-1 438 (500-1)	3740-1 458 (500-1)	3880-1½ 598 (600-1½)	3940-2 658 (700-2)	4100-3 818 (900-3)

SC-2, 13 JUN 2024 to 11 JUL 2024

SC-2, 13 JUN 2024 to 11 JUL 2024