

| | | | |
|--------------|-------------|----------|-------------|
| LOC I-MCN | APP CRS | Rwy Idg | 6221 |
| 109.5 | 054° | TDZE | 344 |
| | | Apt Elev | 354 |

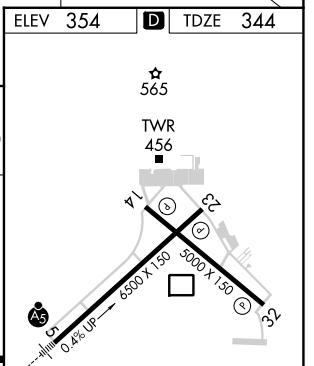
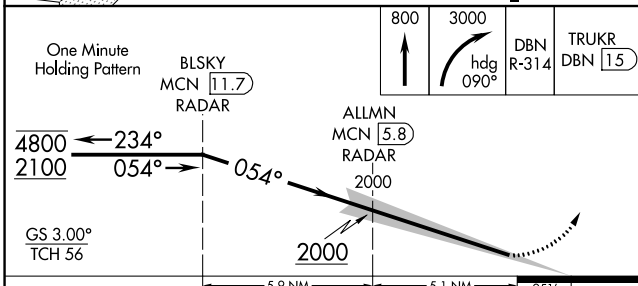
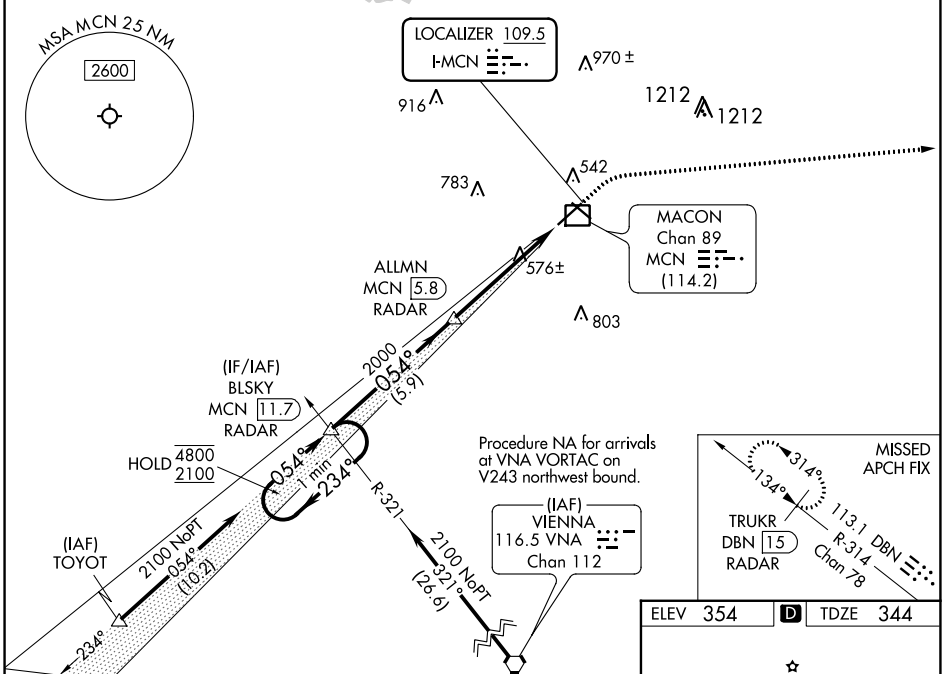
ILS RWY 5 (SA CAT I & II)

MIDDLE GEORGIA RGNL (MCN)

DME and RADAR required.

MALS MISSED APPROACH: Climb to 800 then climbing right turn to 3000 on heading 090° and DBN VORTAC R-314 to TRUKR/DBN VORTAC 15 DME/RADAR and hold.

| | | | | |
|----------------|--------------------|---------------------------|---------------|---------------|
| ATIS | ATLANTA APP CON * | MACON TOWER * | GND CON | UNICOM |
| 120.775 | 124.2 279.6 | 128.2 (CTAF) 257.8 | 121.65 | 122.95 |



| CATEGORY | A | B | C | D |
|----------|-----------|-----------|------------|---|
| S-ILS 5 | SA CAT I | RA 216/14 | 150 DA 494 | |
| S-ILS 5 | SA CAT II | RA 151/12 | 100 DA 444 | |

SA CATEGORY I & II ILS - SPECIAL AIRCREW & AIRCRAFT CERTIFICATION REQUIRED

HIRL Rwy 5-23

MIRL Rwy 14-32

REIL Rws 23 and 32

SE-4, 13 JUN 2024 to 11 JUL 2024

SE-4, 13 JUN 2024 to 11 JUL 2024