

MARIANNA, FLORIDA

AL-248 (FAA)

23166

VORTAC MAI 114.0 Chan 87	APP CRS 316°	Rwy ldg TDZE Apt Elev N/A N/A 110
--	------------------------	---

VOR-A
MARIANNA MUNI (MAI)

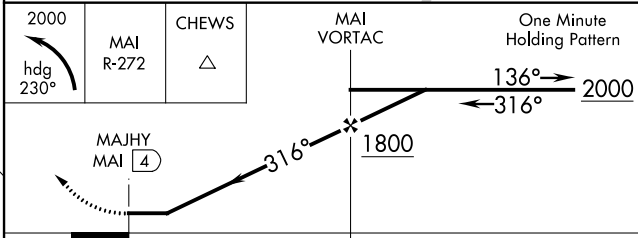
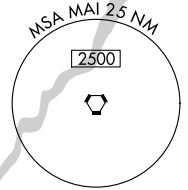
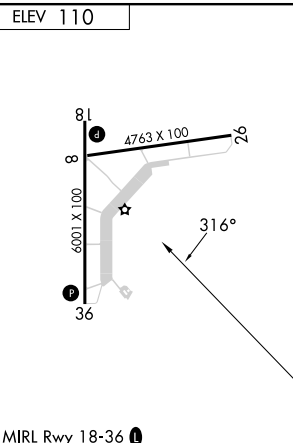
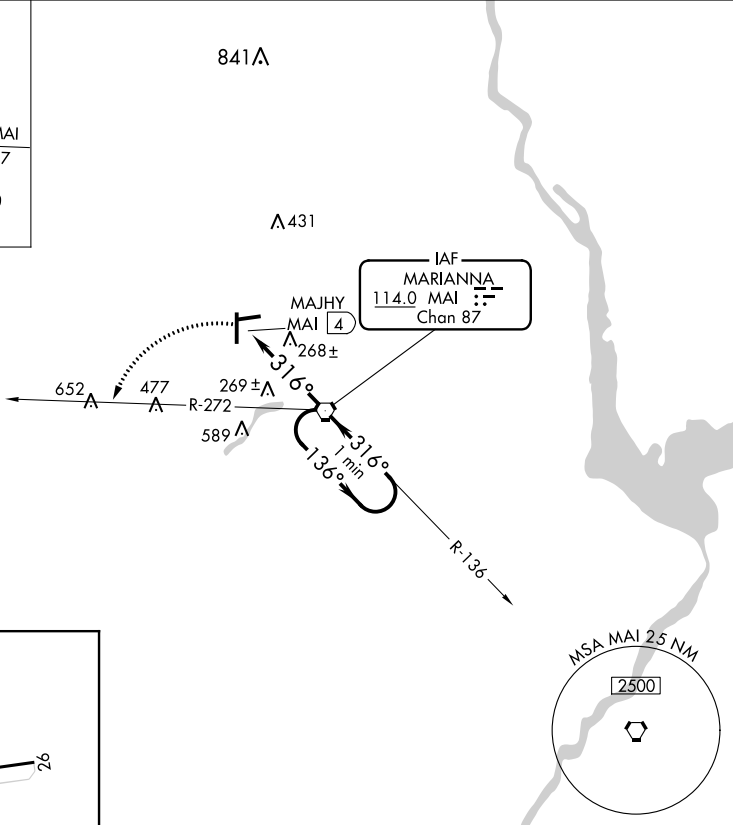
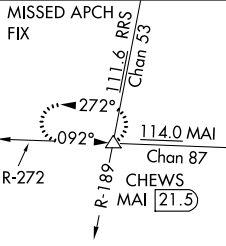
⚠ Helicopter visibility reduction below 1 SM NA. When local altimeter setting not received, use Bainbridge altimeter setting; Increase all MDA 80 feet and Circling Cat D visibility ¼ SM. Circling Rwy 26 NA at night.

MISSED APPROACH: Climbing left turn to 2000 via heading 230° and MAI R-272 to CHEWS INT/MAI 21.5 DME and hold.

ASOS
133.525

CAIRNS APP CON ★
133.75 270.35

UNICOM
123.0 (CTAF) 0



MIRL Rwy 18-36 0

FAF to MAP 4 NM					
Knots	60	90	120	150	180
Min:Sec	4:00	2:40	2:00	1:36	1:20

CATEGORY	A	B	C	D
C CIRCLING	620-1	510 (600-1)	620-1½ 510 (600-1½)	900-2½ 790 (800-2½)

MARIANNA, FLORIDA
Amdt 12B 23APR20

30°50'N-85°11'W

MARIANNA MUNI (MAI)
VOR-A

SE-3, 13 JUN 2024 to 11 JUL 2024

SE-3, 13 JUN 2024 to 11 JUL 2024