

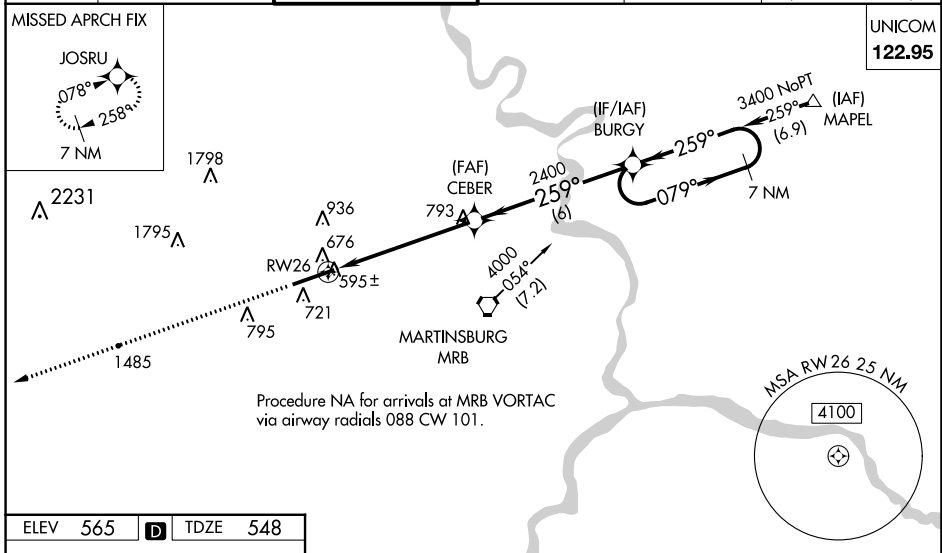
WAAS CH <b>53609</b> <b>W26A</b>	APP CRS <b>259°</b>	Rwy Idg TDZE Apt Elev	<b>7815</b> <b>548</b> <b>565</b>
--	------------------------	-----------------------------	---

# RNAV (GPS) RWY 26

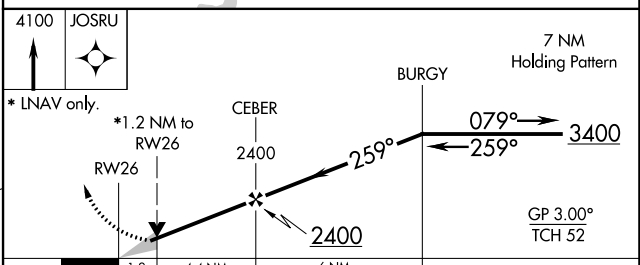
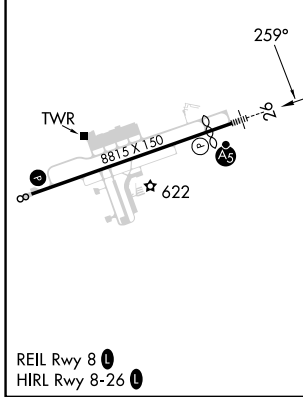
EASTERN WV RGNL/SHEPHERD FLD (MRB)

RNP APCH	MALSRL AS	MISSED APPROACH: Climb to 4100 direct JOSRU and hold, continue climb-in-hold to 4100.
<p>▼ Baro-VNAV NA when using Hagerstown altimeter setting. For uncompensated Baro-VNAV systems, LNAV/VNAV NA below -16°C (4°F) or above 54°C (130°F). VDP NA when using Hagerstown altimeter setting. When local altimeter setting not received, use Hagerstown altimeter setting and increase all DA 70 feet and all MDA 80 feet, increase LNAV/VNAV all Cats, LNAV Cats C, D, E and Circling Cat C and D visibility ¼ mile. For inoperative MALSRL increase LPV Cat E visibility to ¾ mile, LNAV/VNAV Cat E to 2¼ mile, LNAV Cat E to 1½ mile. For inoperative MALSRL when using Hagerstown altimeter setting increase LPV all Cats visibility to 1 mile, LNAV/VNAV Cat E visibility to 2½ mile and LNAV Cat E visibility to 1¾ mile.</p>		

ASOS <b>119.925</b>	POTOMAC APP CON <b>126.825 239.025</b>	MARTINSBURG TOWER ★ <b>124.3</b> (CTAF) <b>233.7</b>	GND CON <b>121.8 257.65</b>	CLNC DEL <b>121.8 257.65</b>	CLNC DEL <b>132.075 269.075</b> (When twr closed)
------------------------	---	---	--------------------------------	---------------------------------	---



ELEV 565	D	TDZE 548
----------	---	----------



CATEGORY	A	B	C	D	E
LPV DA	798-½		250 (300-½)		
LNAV/VNAV DA	1213-1¾		665 (700-1¾)		
LNAV MDA	980-½	432 (500-½)	980-¾ 432 (500-¾)	980-1	432 (500-1)
CIRCLING	1100-1 535 (600-1)	1240-1 675 (700-1)	1240-2 675 (700-2)	1260-2 ¼ 695 (700-2 ¼)	2140-3 1575 (1600-3)

NE-4, 13 JUN 2024 to 11 JUL 2024

NE-4, 13 JUN 2024 to 11 JUL 2024