

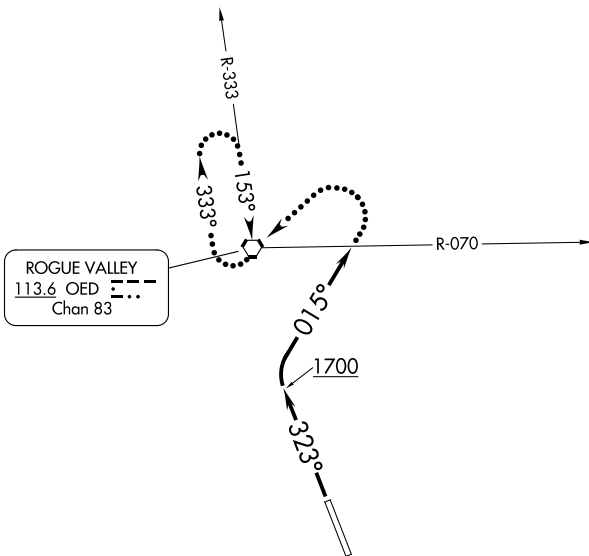
# EAGLE SIX DEPARTURE

AL-251 (FAA)

ROGUE VALLEY INTL-MEDFORD (MFR)  
MEDFORD, OREGON

CASCADE DEP CON ★  
 124.3 379.9  
 ATIS  
 127.25  
 GND CON  
 121.8  
 MEDFORD TOWER ★  
 119.4 (CTAF) 257.8  
 SEATTLE CENTER  
 124.85 306.3

**TOP ALTITUDE:  
11000**



ROGUE VALLEY  
 113.6 OED  
 Chan 83

### TAKEOFF MINIMUMS

Rwys 14: NA - ATC.

Rwy 32: Standard with minimum climb of 410' per NM to 6300.

NOTE: Chart not to scale.

### DEPARTURE ROUTE DESCRIPTION

TAKEOFF RUNWAY 32: Climb to 1700 on heading 323° then climbing right turn heading 015°, maintain 11000 or assigned altitude, expect RADAR vectors to assigned route; expect filed altitude/flight level five minutes after departure.

LOST COMMUNICATIONS: If no contact with ATC crossing the OED R-070, turn left, proceed direct OED VORTAC, continue climb in holding pattern to minimum crossing altitude/minimum enroute altitude before proceeding on course.

NW-1, 13 JUN 2024 to 11 JUL 2024

NW-1, 13 JUN 2024 to 11 JUL 2024