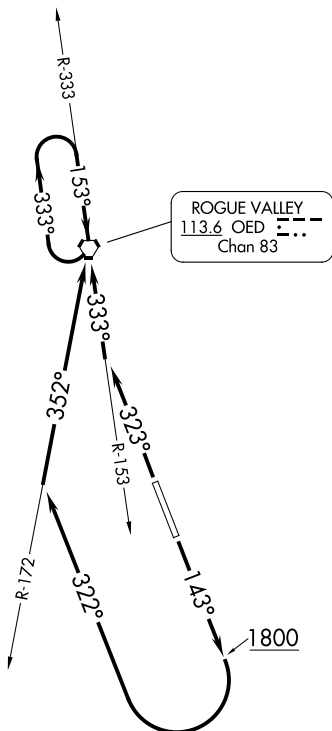


(JKSN1.OED) 23334

JACKSON ONE DEPARTURE

AL-251 (FAA) ROGUE VALLEY INTL-MEDFORD (MFR)
MEDFORD, OREGON

CASCADE DEP CON ★
124.3 379.9
ATIS
127.25
GND CON
121.8
MEDFORD TOWER ★
119.4 (CTAF) 257.8
SEATTLE CENTER
124.85 306.3



TAKEOFF MINIMUMS

Rwy 14: Standard with a minimum climb of 435' per NM to 4700.
Rwy 32: Standard with a minimum climb of 300' per NM to 6800.

NOTE: Chart not to scale.

DEPARTURE ROUTE DESCRIPTION

TAKEOFF RUNWAY 14: Climb on heading 143° to 1800, then climbing right turn heading 322° and OED VORTAC R-172 to OED VORTAC, thence. . . .

TAKEOFF RUNWAY 32: Climb on heading 323° to intercept the OED VORTAC R-153 to OED VORTAC, thence. . . .

. . . . continue climb-in-hold in OED VORTAC holding pattern to cross OED VORTAC at or above MEA/MCA for direction of flight before proceeding on course.

JACKSON ONE DEPARTURE

(JKSN1.OED) 05JAN17

MEDFORD, OREGON
ROGUE VALLEY INTL-MEDFORD (MFR)

NW-1, 13 JUN 2024 to 11 JUL 2024

NW-1, 13 JUN 2024 to 11 JUL 2024