

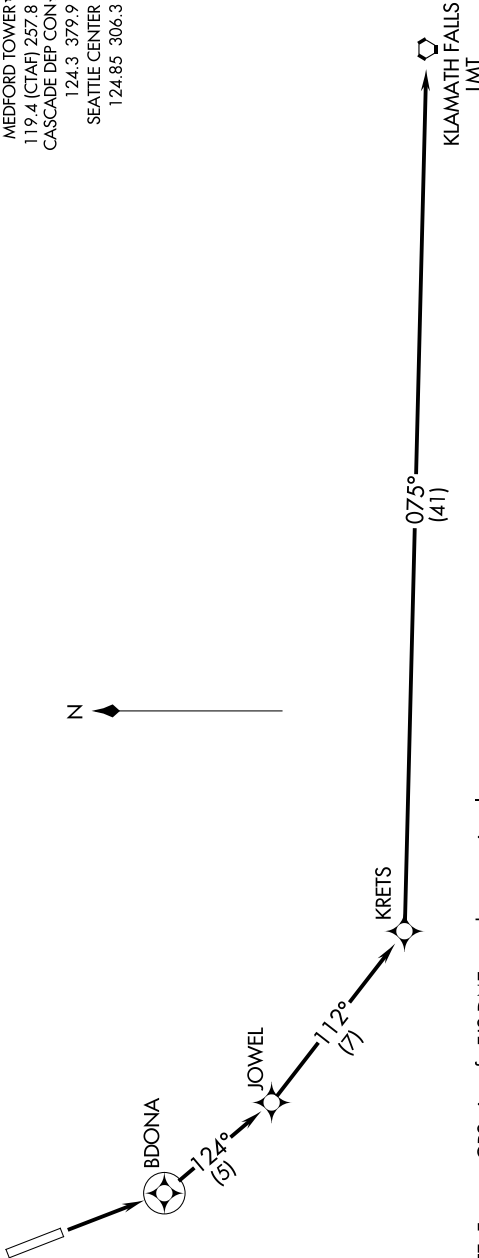
KLAMATH FALLS ONE DEPARTURE (RNAV)

NW-1, 13 JUN 2024 to 11 JUL 2024

ATIS 127.25
 GND CON 121.8
 MEDFORD TOWER* 119.4 (CTAF) 257.8
 CASCADE DEP CON* 124.3 379.9
 SEATTLE CENTER 124.85 306.3

RNAV 1 - DME/DME/IRU or GPS.
 RADAR required for non-GPS equipped aircraft.

**TOP ALTITUDE:
 ASSIGNED BY ATC**



NOTE: For non-GPS aircraft, F/S DME must be operational.

TAKEOFF MINIMUMS

Rwy 14: Standard with minimum climb of 425' per NM to 6400.

NOTE: Chart not to scale.

DEPARTURE ROUTE DESCRIPTION

TAKEOFF RUNWAY 14: Climb direct BDONA, then on track 124° to JOWEL, then on track 112° to KRETS, then on track 075° to LMT VORTAC. Expect RADAR vectors on course. Maintain assigned altitude. Expect filed altitude five minutes after departure.

NW-1, 13 JUN 2024 to 11 JUL 2024