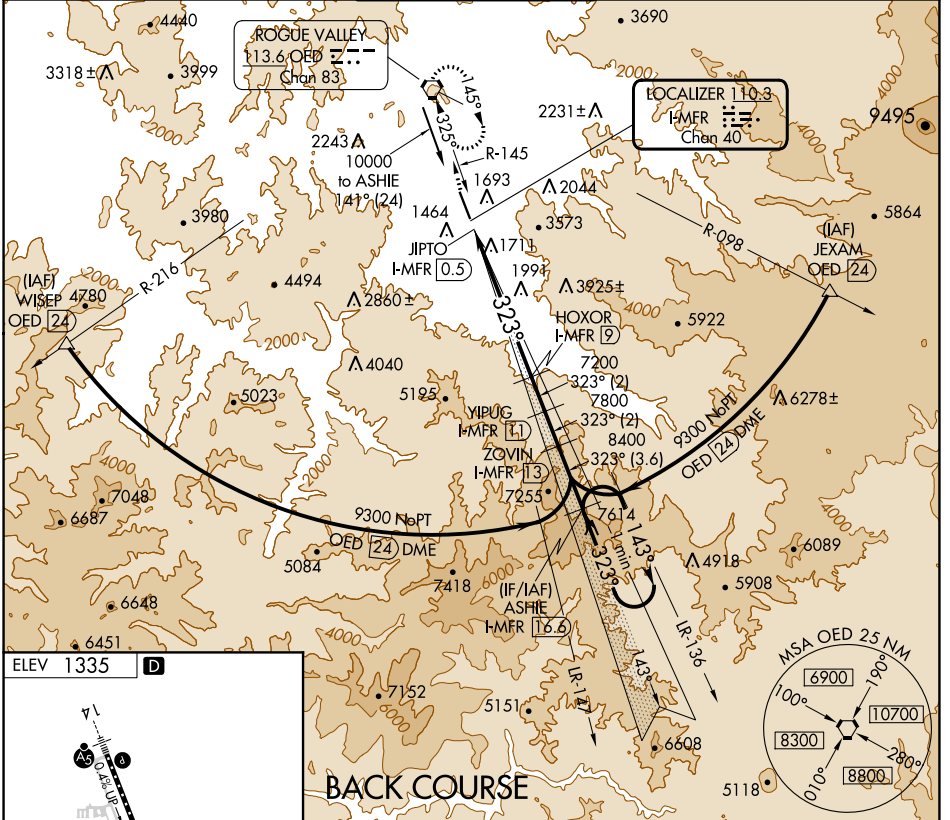


LOC/DME I-MFR <b>110.3</b> Chan 40	APP CRS <b>323°</b>	Rwy Idg TDZE Apt Elev <b>1335</b>	<b>N/A</b> <b>N/A</b>
--	------------------------	--	--------------------------

**LOC/DME BC-B**  
ROGUE VALLEY INTL-MEDFORD (MFR)

**⚠** Visibility reduction by helicopters NA. Circling NA for Cats C and D northeast of Rwy 14-32.  
**⚠** -3°C  
 MISSED APPROACH: Climb to 7600 direct OED VORTAC and hold, continue climb-in-hold to 7600.

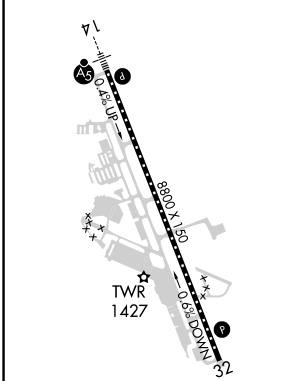
ATIS <b>127.25</b>	CASCADE APP CON * <b>124.3 379.9</b>	MEDFORD TOWER * <b>119.4 (CTAF) 257.8</b>	GND CON <b>121.8</b>	UNICOM <b>122.95</b>
-----------------------	---	--	-------------------------	-------------------------



NW-1, 13 JUN 2024 to 11 JUL 2024

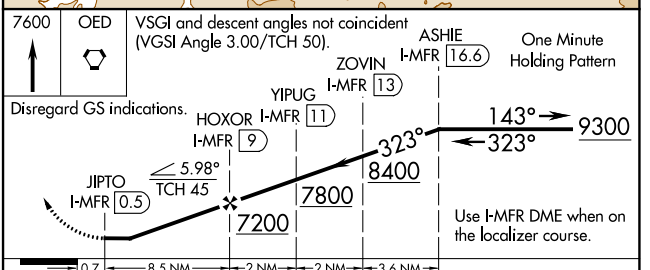
NW-1, 13 JUN 2024 to 11 JUL 2024

ELEV 1335 **D**



- CL Rwy 14-32 **1**
- TDZ/CL Rwy 14 **1**
- REIL Rwy 32 **1**
- HIRL Rwy 14-32 **1**

**BACK COURSE**



CATEGORY	A	B	C	D
CIRCLING	3540-1¼ 2205 (2300-1¼)	3540-1½ 2205 (2300-1½)	3540-3	2205 (2300-3)