

VORTAC OED 113.6 Chan 83	APP CRS 146°	Rwy Idg TDZE Apt Elev	8800 1303 1335
--	------------------------	-----------------------------	---

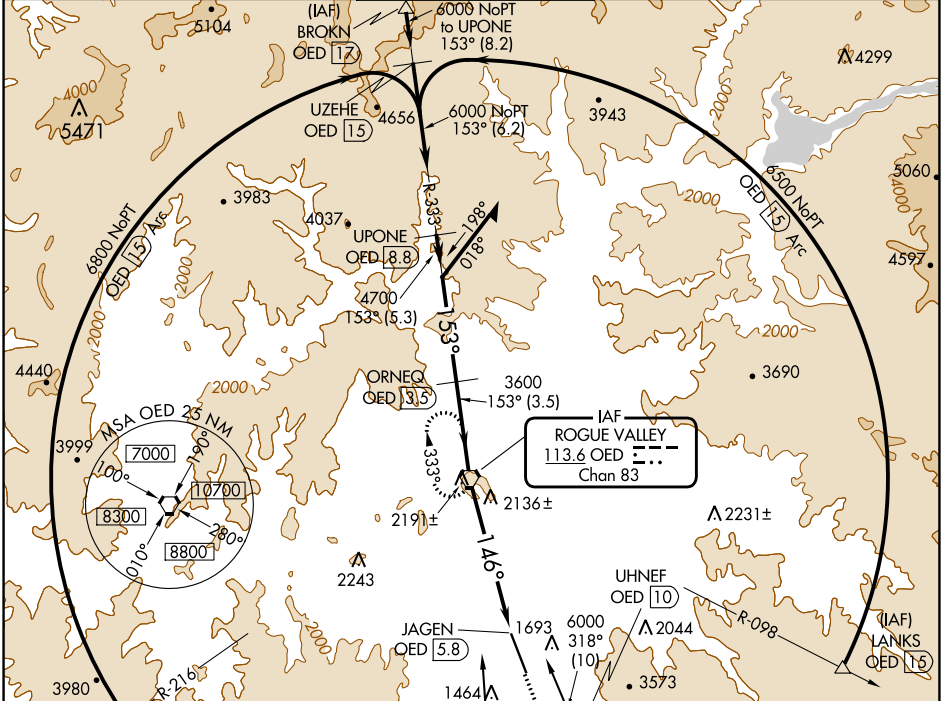
VOR/DME RWY 14

ROGUE VALLEY INTL-MEDFORD (MFR)

⚠ Inop table does not apply to S-14 Cat A. For inop ALS increase S-14 Cat B visibility to 1½ SM. Circling NA for Cats C and D northeast of Rwy 14-32.

MALSR MISSED APPROACH: Climb to 2900 then climbing right turn to 6400 direct OED VORTAC and hold, continue climb-in-hold to 6400.

ATIS 127.25	CASCADE APP CON * 124.3 379.9	MEDFORD TOWER * 119.4 (CTAF) 0 257.8	GND CON 121.8	UNICOM 122.95
-----------------------	---	--	-------------------------	-------------------------



NW-1, 13 JUN 2024 to 11 JUL 2024

NW-1, 13 JUN 2024 to 11 JUL 2024

ELEV 1335	TDZE 1303
-----------	-----------

VGSI and descent angles not coincident (VGSI Angle 3.00/TCH 73).

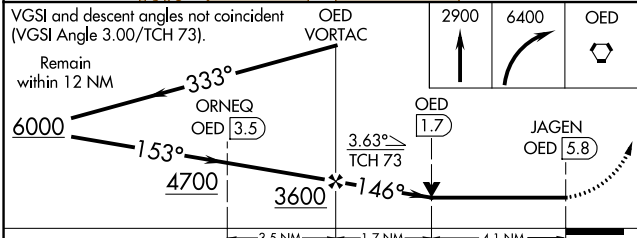
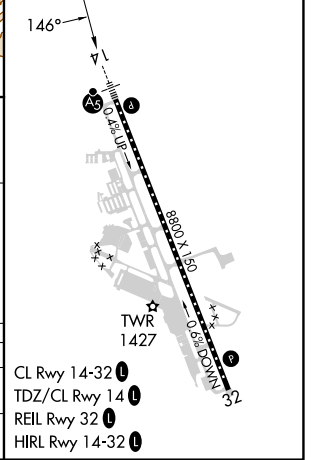
Remain within 12 NM

6000 → 333° → ORNEQ OED 3.5

4700 → 153° → 3600 → 146° → JAGEN OED 5.8

3.63° TCH 73

2900 6400 OED



CATEGORY	A	B	C	D
S-14	2680/60	1377 (1400-1½)	2680-3	1377 (1400-3)
CIRCLING	2680-1¼ 1345 (1400-1¼)	2680-1½ 1345 (1400-1½)	2680-3	1345 (1400-3)

CL Rwy 14-32
 TDZ/CL Rwy 14
 REIL Rwy 32
 HIRL Rwy 14-32