

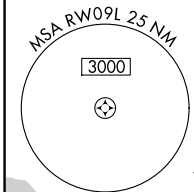
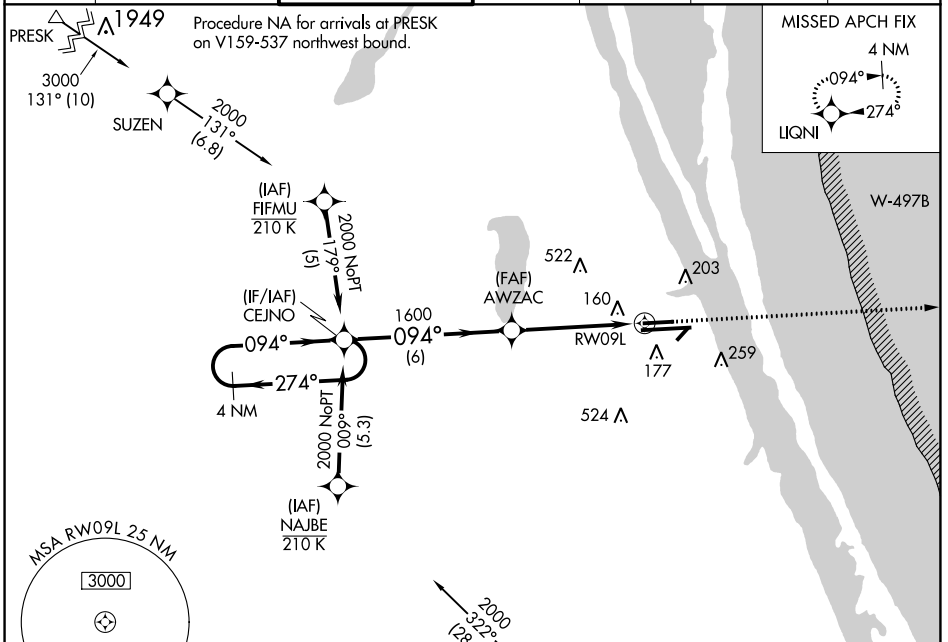
WAAS CH 65601 W09A	APP CRS 094°	Rwy Idg TDZE 33 Apt Elev 33	6000
--	------------------------	---	-------------

RNAV (GPS) RWY 9L

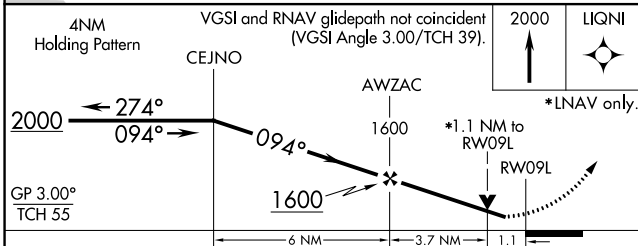
MELBOURNE ORLANDO INTL (MLB)

RNP APCH.				MISSED APPROACH: Climb to 2000 direct LIQNI and hold.		
⚠ For uncompensated Baro-VNAV systems, LNAV/VNAV NA below -1.5°C (5°F) or above 54°C (130°F). Helicopter visibility reduction below ¾ SM NA.						

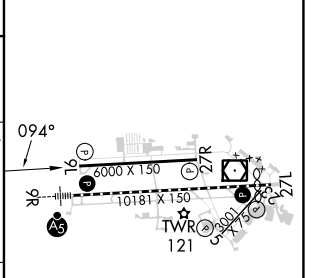
ATIS 132.55	ORLANDO APP CON 132.65 281.425	MELBOURNE TOWER * 118.2 (CTAF) 257.8	GND CON 121.9	CLNC DEL 121.9	CLNC DEL 132.65 (When twr closed)	UNICOM 122.95
-----------------------	--	---	-------------------------	--------------------------	--	-------------------------



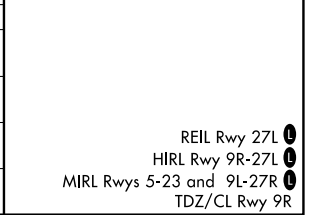
Procedure NA for arrivals on TRV VORTAC airway radials 303 CW 350.



ELEV 33	TDZE 33
---------	---------



CATEGORY	A	B	C	D
LPV DA		283-3/4	250 (300-3/4)	
LNAV/VNAV DA		467-13/8	434 (500-13/8)	
LNAV MDA	420-1	387 (400-1)	420-1 1/8	387 (400-1 1/8)
CIRCLING	500-1 467 (500-1)	560-1 527 (600-1)	680-1 3/4 647 (700-1 3/4)	880-2 3/4 847 (900-2 3/4)



REIL Rwy 27L
HIRL Rwy 9R-27L
MIRL Rwy 5-23 and 9L-27R
TDZ/CL Rwy 9R

SE-3, 13 JUN 2024 to 11 JUL 2024

SE-3, 13 JUN 2024 to 11 JUL 2024