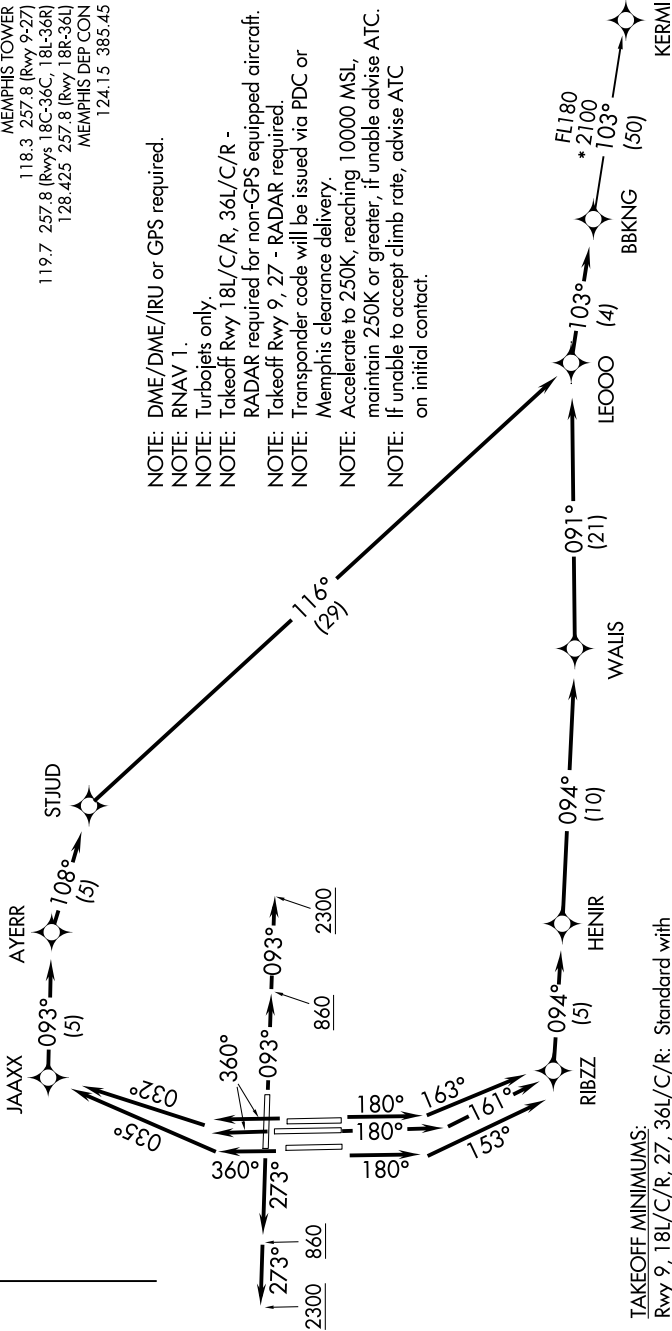
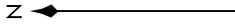


# BBKNG SEVEN DEPARTURE (RNAV)

SE-1, 13 JUN 2024 to 11 JUL 2024

**TOP ALTITUDE:**  
5000



D-ATIS 127.75  
CLNC DEL 125.2  
CPDLC  
GND CON  
121.0 379.2 (Rwy 9-27)  
121.9 379.2 (Rwys 18C-36C, 18L-36R)  
121.65 379.2 (Rwy 18R-36L)  
MEMPHIS TOWER  
118.3 257.8 (Rwy 9-27)  
119.7 257.8 (Rwys 18C-36C, 18L-36R)  
128.425 257.8 (Rwy 18R-36L)  
MEMPHIS DEP CON  
124.15 385.45

NOTE: DME/DME/IRU or GPS required.  
NOTE: RNAV 1.  
NOTE: Turbojets only.  
NOTE: Takeoff Rwy 18L/C/R, 36L/C/R - RADAR required for non-GPS equipped aircraft.  
NOTE: Takeoff Rwy 9, 27 - RADAR required.  
NOTE: Transponder code will be issued via PDC or Memphis clearance delivery.  
NOTE: Accelerate to 250K, reaching 10000 MSL, maintain 250K or greater, if unable advise ATC.  
NOTE: If unable to accept climb rate, advise ATC on initial contact.

**TAKEOFF MINIMUMS:**  
Rwy 9, 18L/C/R, 27, 36L/C/R: Standard with minimum climb of 500' per NM to 860.

NOTE: Chart not to scale.

(NARRATIVE ON FOLLOWING PAGE)

SE-1, 13 JUN 2024 to 11 JUL 2024

# BBKNG SEVEN DEPARTURE (RNAV)