

GOETZ SEVEN DEPARTURE (RNAV)

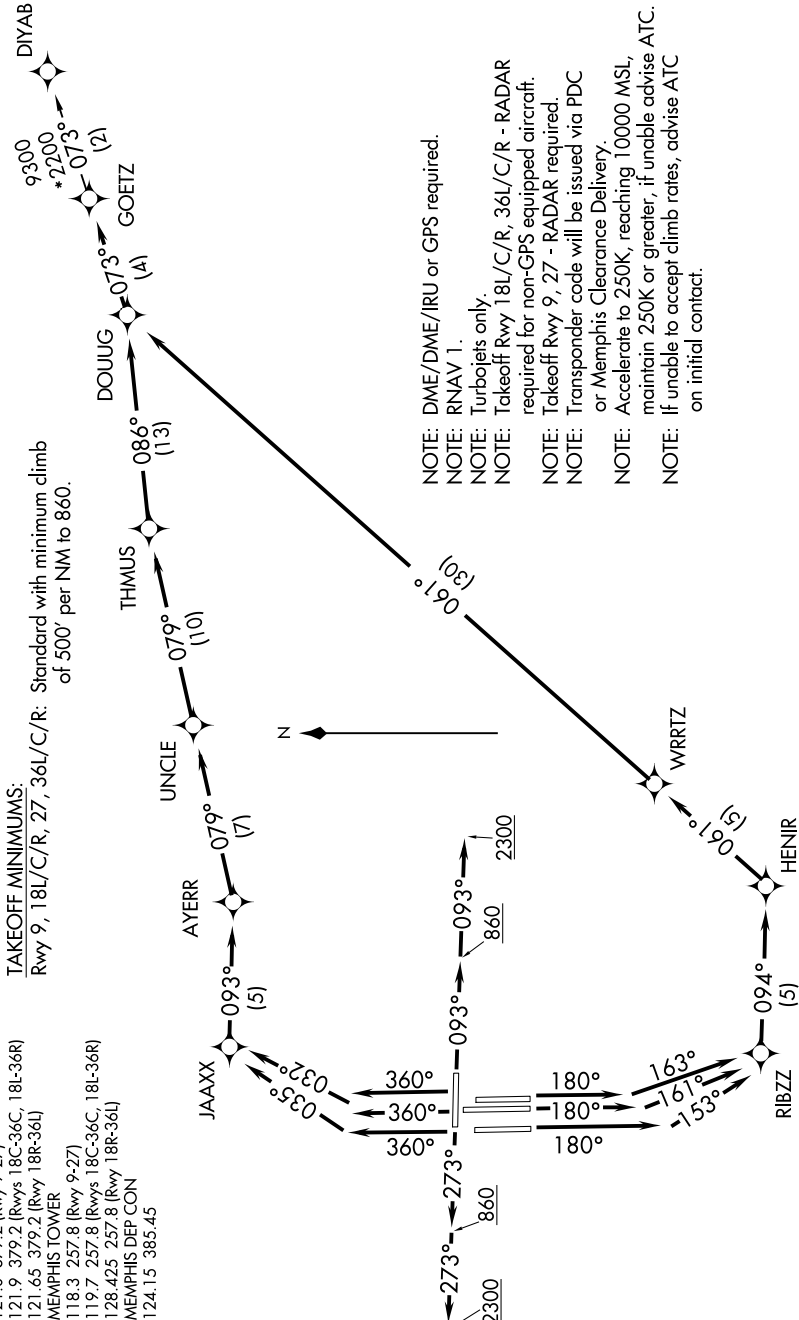
SE-1, 13 JUN 2024 to 11 JUL 2024

TOP ALTITUDE:
5000

TAKEOFF MINIMUMS:

Rwy 9, 18L/C/R, 27, 36L/C/R: Standard with minimum climb of 500' per NM to 860.

- D-ATIS 127.75
- CLNC DEL 125.2
- CPDLC
- GND CON
- 121.0 379.2 (Rwy 9-27)
- 121.9 379.2 (Rwys 18C-36C, 18L-36R)
- 121.65 379.2 (Rwy 18R-36L)
- MEMPHIS TOWER
- 118.3 257.8 (Rwy 9-27)
- 119.7 257.8 (Rwys 18C-36C, 18L-36R)
- 128.425 257.8 (Rwy 18R-36L)
- MEMPHIS DEP CON
- 124.15 385.45



- NOTE: DME/DME/IRU or GPS required.
- NOTE: RNAV 1.
- NOTE: Turbojets only.
- NOTE: Takeoff Rwy 18L/C/R, 36L/C/R - RADAR required for non-GPS equipped aircraft.
- NOTE: Takeoff Rwy 9, 27 - RADAR required.
- NOTE: Transponder code will be issued via PDC or Memphis Clearance Delivery.
- NOTE: Accelerate to 250K, reaching 10000 MSL, maintain 250K or greater, if unable advise ATC.
- NOTE: If unable to accept climb rates, advise ATC on initial contact.

(NARRATIVE ON FOLLOWING PAGE)

NOTE: Chart not to scale.

GOETZ SEVEN DEPARTURE (RNAV)

SE-1, 13 JUN 2024 to 11 JUL 2024