

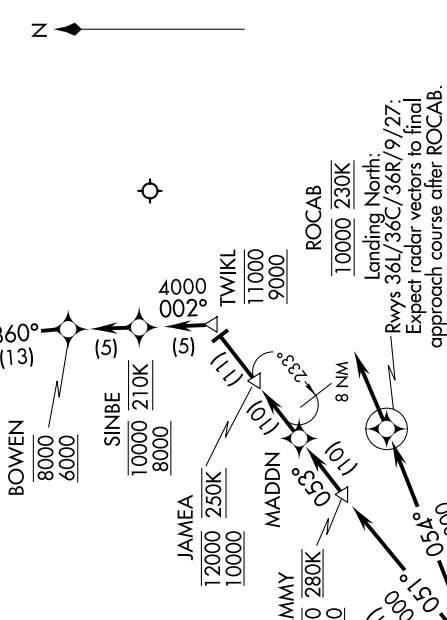
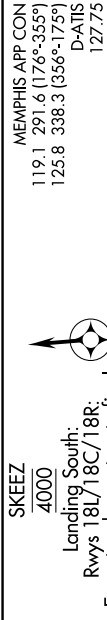
HOBKR THREE ARRIVAL (RNAV)

SE-1, 13 JUN 2024 to 11 JUL 2024

- EL DORADO TRANSITION (ELD.HOBKR3):
- FAYEE TRANSITION (FAYEE.HOBKR3):
- LITTLE ROCK TRANSITION (LIT.HOBKR3):
- MEVEE TRANSITION (MEVEE.HOBKR3):
- TEXARKANA TRANSITION (TXK.HOBKR3):

LANDING NORTH: RWYS 36L/36C/36R/9/27. From over HOBKR on track 054° to ROCAB, cross ROCAB at 10000 at 230K, then on track 054°. Expect radar vectors to final approach course.

LANDING SOUTH: RWYS 18L/18C/18R. From over HOBKR on track 051° to TAMMY, cross TAMMY at/below 16000 and at/above 14000 at 280K, then on track 053° to MADDN, then on track 053° to JAMEA, cross JAMEA at/below 12000 and at/above 10000 at 250K, then on track 053° to TWIKL, cross TWIKL at/below 11000 and at/above 9000, then on track 002° to SINBE, cross SINBE at/below 10000 and at/above 8000 at 210K, then on track 002° to BOWEN, cross BOWEN at/below 8000 and at/above 6000, then on track 360° to SKEEZ, cross SKEEZ at 4000, then on track 360°. Expect radar vectors to final approach course.



- NOTE: Descend via Mach number until transition to 290K.
- NOTE: Radar required.
- NOTE: RNAV 1.
- NOTE: DME/DME/IRU or GPS required.
- NOTE: Turboprop aircraft only.
- NOTE: Landing South indicates Rwy 18L/18C/18R.
- NOTE: Landing North indicates Rwy 36L/36C/36R/9/27.
- NOTE: Expect to receive landing direction (North/South) and "Descend via" clearance from Memphis Center.
- NOTE: Memphis Approach will assign landing Runway.

HOBKR THREE ARRIVAL (RNAV)

SE-1, 13 JUN 2024 to 11 JUL 2024

NOTE: Chart not to scale.