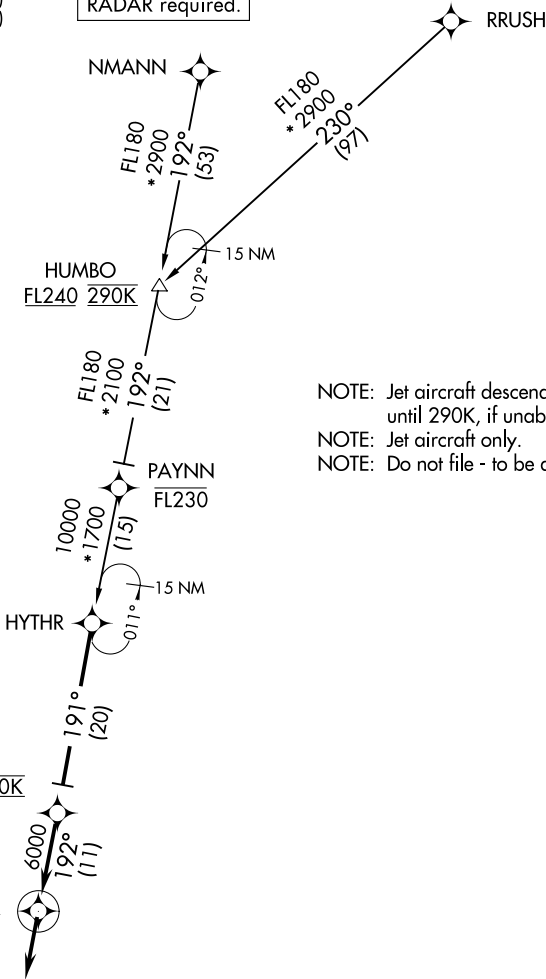


HYTHR THREE ARRIVAL (RNAV)

MEMPHIS APP CON
119.1 291.6 (176°-355°)
125.8 338.3 (356°-175°)
D-ATIS
127.75

RNAV 1 - DME/DME/IRU or GPS.

RADAR required.



NOTE: Jet aircraft descend via Mach number until 290K, if unable, advise ATC.
NOTE: Jet aircraft only.
NOTE: Do not file - to be assigned by ATC.

NOTE: Chart not to scale.

ARRIVAL ROUTE DESCRIPTION

HUMBO TRANSITION (HUMBO.HYTHR3):
NMANN TRANSITION (NMANN.HYTHR3):
RRUSH TRANSITION (RRUSH.HYTHR3):

From HYTHR on track 191° to cross ROBYE at 10000 and at 250K, then on track 192° to ASSUR. Then on track 192°. Expect radar vectors to final approach course.