

LOC/DME I-OHN <b>108.9</b> Chan 26	APP CRS <b>360°</b>	Rwy Idg <b>9320</b> TDZE <b>321</b> Apt Elev <b>341</b>
--	------------------------	---

# ILS RWY 36L (CAT II & III)

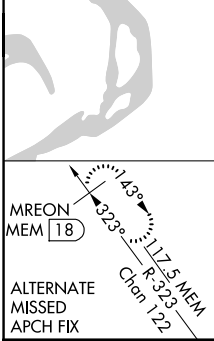
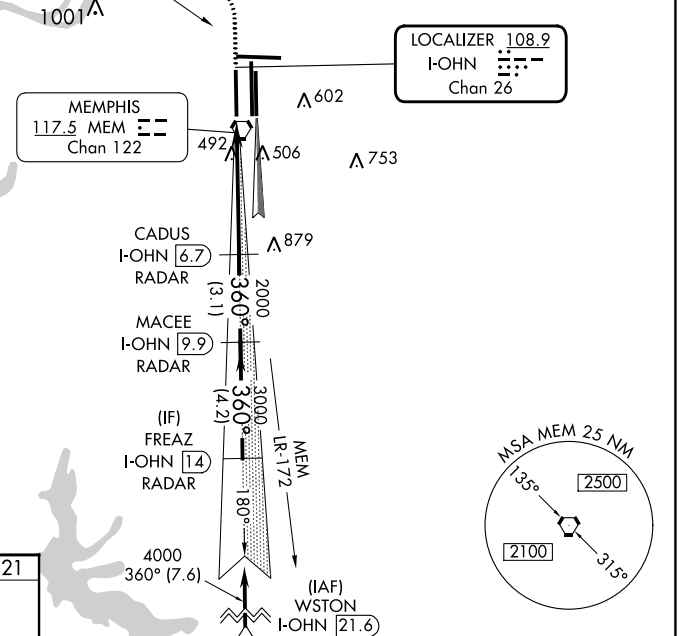
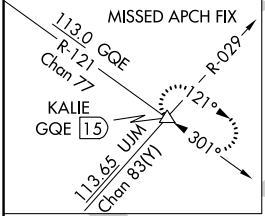
MEMPHIS INTL (MEM)

**Simultaneous approach authorized with Rwy 36C/R.**  
DME or RADAR required.

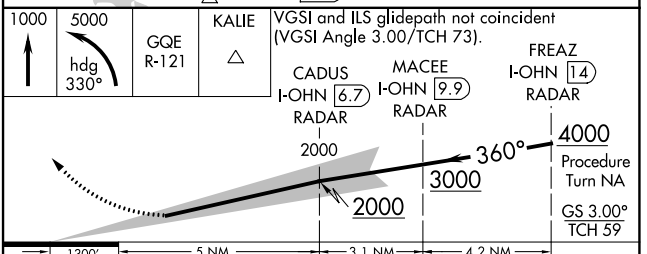
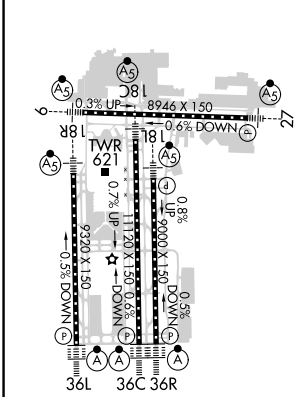
**MISSED APPROACH:** Climb to 1000 then climbing left turn to 5000 via heading 330° and GQE VOR/DME R-121 to KALIE INT/GQE 15 DME and hold, continue climb-in-hold to 5000.

MEMPHIS APP CON <b>119.1 291.6</b> (176°-355°) <b>125.8 338.3</b> (356°-175°)	MEMPHIS TOWER (Rwy 9-27) <b>118.3 257.8</b> (Rwys 18C-36C, 18L-36R) <b>119.7 257.8</b> (Rwy 18R-36L) <b>128.425 257.8</b>	GND CON (Rwy 9-27) <b>121.0 379.2</b> (Rwys 18C-36C, 18L-36R) <b>121.9 379.2</b> (Rwy 18R-36L) <b>121.65 379.2</b>
---	--	---

D-ATIS <b>127.75</b>	113.0 GQE Chan 77	R-121	Λ 720	CLNC DEL <b>125.2</b>	CPDLC
-------------------------	-------------------	-------	-------	--------------------------	-------



ELEV 341	<b>D</b>	TDZE 321
----------	----------	----------



CATEGORY	A	B	C	D
S-ILS 36L	CAT II RA 100/12 100 DA 421			
S-ILS 36L	CAT IIIa RVR 07			
S-ILS 36L	CAT IIIb RVR 03			
S-ILS 36L	CAT IIIc NA			

## CATEGORY II & III ILS - SPECIAL AIRCREW & AIRCRAFT CERTIFICATION REQUIRED

SE-1, 13 JUN 2024 to 11 JUL 2024

SE-1, 13 JUN 2024 to 11 JUL 2024