

LOC/DME I-MYO <b>111.35</b> Chan 50 (Y)	APP CRS <b>360°</b>	Rwy ldg TDZE Apt Elev	<b>9000</b> <b>335</b> <b>341</b>
---	------------------------	-----------------------------	---

# ILS RWY 36R (CAT II & III)

MEMPHIS INTL (MEM)

**⚠** Simultaneous approach authorized with Rwy 36L.  
DME or RADAR required.

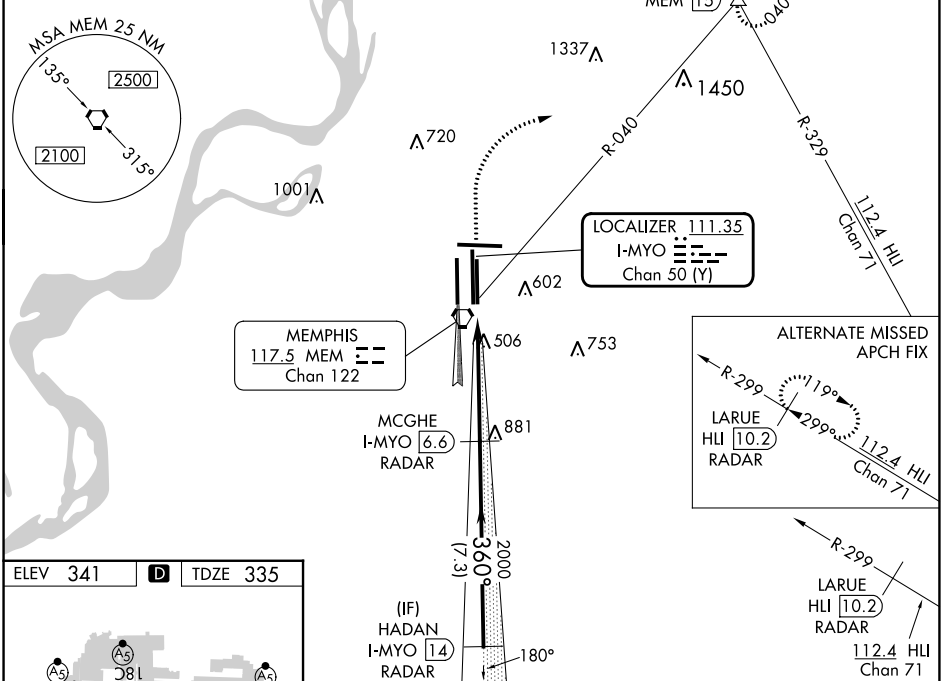


**MISSED APPROACH:** Climb to 1000 then climbing right turn to 5000 via heading 070° and MEM VORTAC R-040 to OROCU INT/MEM VORTAC 15 DME and hold, continue climb-in-hold to 5000.

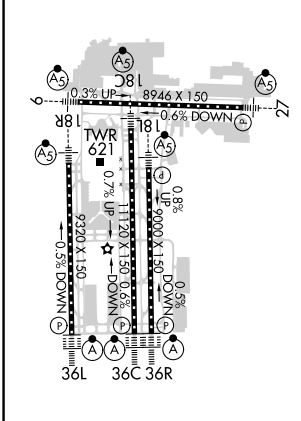
MEMPHIS APP CON <b>119.1 291.6</b> (176°-355°) <b>125.8 338.3</b> (356°-175°)	MEMPHIS TOWER (Rwy 9-27) <b>118.3 257.8</b> (Rwys 18C-36C, 18L-36R) <b>119.7 257.8</b> (Rwy 18R-36L) <b>128.425 257.8</b>	GND CON (Rwy 9-27) <b>121.0 379.2</b> (Rwys 18C-36C, 18L-36R) <b>121.9 379.2</b> (Rwy 18R-36L) <b>121.65 379.2</b>	CLNC DEL <b>125.2</b>
---	--	---	--------------------------

D-ATIS  
**127.75**

## RADAR REQUIRED



ELEV 341	<b>D</b>	TDZE 335
----------	----------	----------



TDZ/CL Rwys 18L, 18C, 18R, 36R, 36C, and 36L  
HIRL all Rwys

1000	5000	MEM R-040	OROCU	MCGHE I-MYO 6.6 RADAR	HADAN I-MYO 14 RADAR
↑	hdg 070°		△	2000	3000
<p>VGSI and ILS glidepath not coincident (VGSI Angle 3.00/TCH 69).</p> <p>GS 3.00° TCH 58</p>					
1131'		5 NM		7.3 NM	
CATEGORY	A	B	C	D	
S-ILS 36R	CAT II RA 109/12 100 DA 435				
S-ILS 36R	CAT IIIa RVR07				
S-ILS 36R	CAT IIIb RVR03				
S-ILS 36R	CAT IIIc NA				

## CATEGORY II & III ILS - SPECIAL AIRCREW & AIRCRAFT CERTIFICATION REQUIRED

SE-1, 13 JUN 2024 to 11 JUL 2024

SE-1, 13 JUN 2024 to 11 JUL 2024