


LOC I-SDU <b>111.95</b>	APP CRS <b>180°</b>	Rwy ldg <b>11120</b> TDZE <b>290</b> Apt Elev <b>341</b>
----------------------------	------------------------	--

# ILS or LOC RWY 18C

MEMPHIS INTL (MEM)

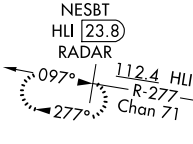
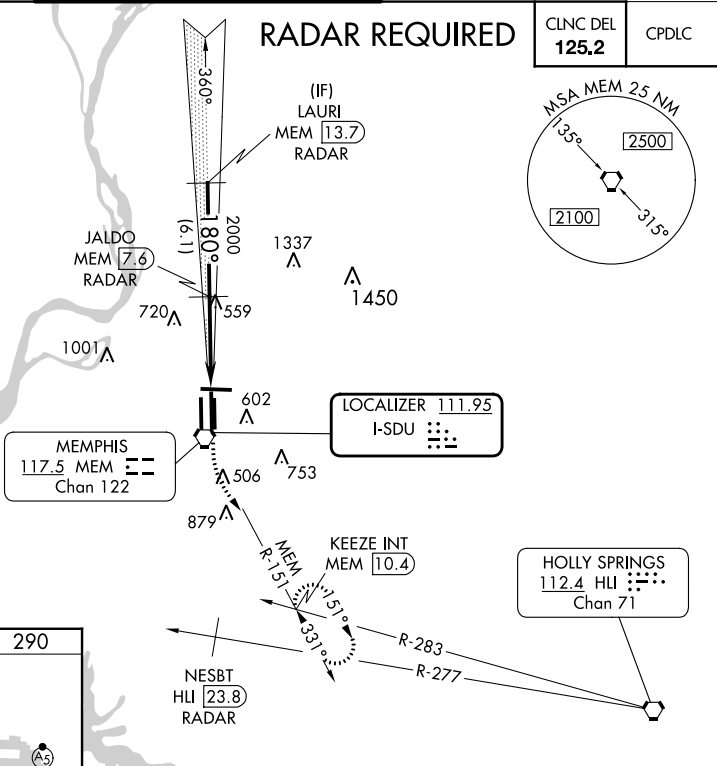
<p>⚠ Simultaneous approach authorized. ⚠ DME or RADAR required. For inop ALS, increase S-ILS 18C all Cats visibility to 1½ SM.</p>	<p>MALSR  </p>	<p>MISSED APPROACH: Climb to 900 then climbing left turn to 5000 on MEM VORTAC R-151 to KEEZE INT/MEM 10.4 DME and hold, continue climb-in-hold to 5000.</p>
--	---	--

MEMPHIS APP CON	MEMPHIS TOWER	GND CON
<b>119.1 291.6</b> (176°-355°)	(Rwy 9-27) <b>118.3 257.8</b>	(Rwy 9-27) <b>121.0 379.2</b>
<b>125.8 338.3</b> (356°-175°)	(Rwys 18C-36C, 18L-36R) <b>119.7 257.8</b>	(Rwys 18C-36C, 18L-36R) <b>121.9 379.2</b>
	(Rwy 18R-36L) <b>128.425 257.8</b>	(Rwy 18R-36L) <b>121.65 379.2</b>

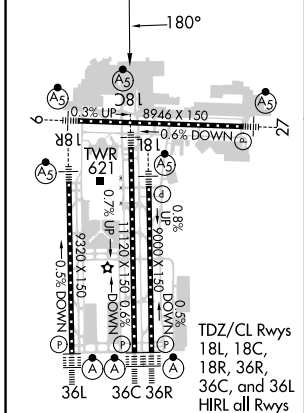
D-ATIS <b>127.75</b>	CLNC DEL <b>125.2</b>	CPDLC
-------------------------	--------------------------	-------

ALTERNATE MISSED APCH FIX

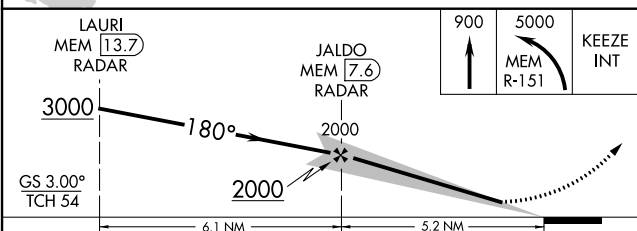
NESBT  
HLI **23.8**  
RADAR

ELEV 341	<b>D</b>	TDZE 290
----------	----------	----------



Knots	60	90	120	150	180
Min:Sec	5:12	3:28	2:36	2:05	1:44



CATEGORY	A	B	C	D	E
S-ILS 18C	657/40 367 (400-¾)				
S-LOC 18C	860/24	570 (600-½)	860/50 570 (600-1)	860/60 570 (600-1¼)	860-1½ 570 (600-1½)
<input checked="" type="checkbox"/> CIRCLING	940-1	599 (600-1)	940-1½ 599 (600-1½)	1020-2¼ 679 (700-2¼)	1140-2¾ 799 (800-2¾)

SE-1, 13 JUN 2024 to 11 JUL 2024

SE-1, 13 JUN 2024 to 11 JUL 2024