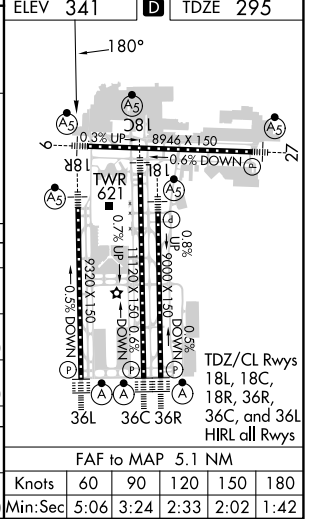
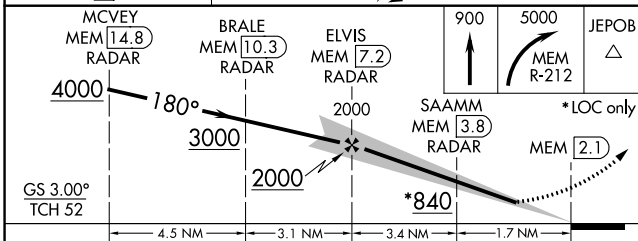
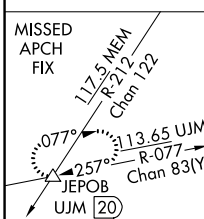
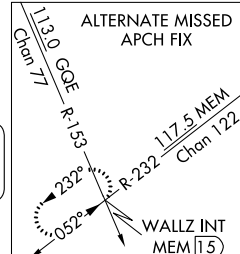
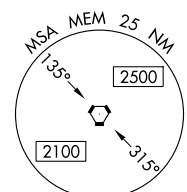
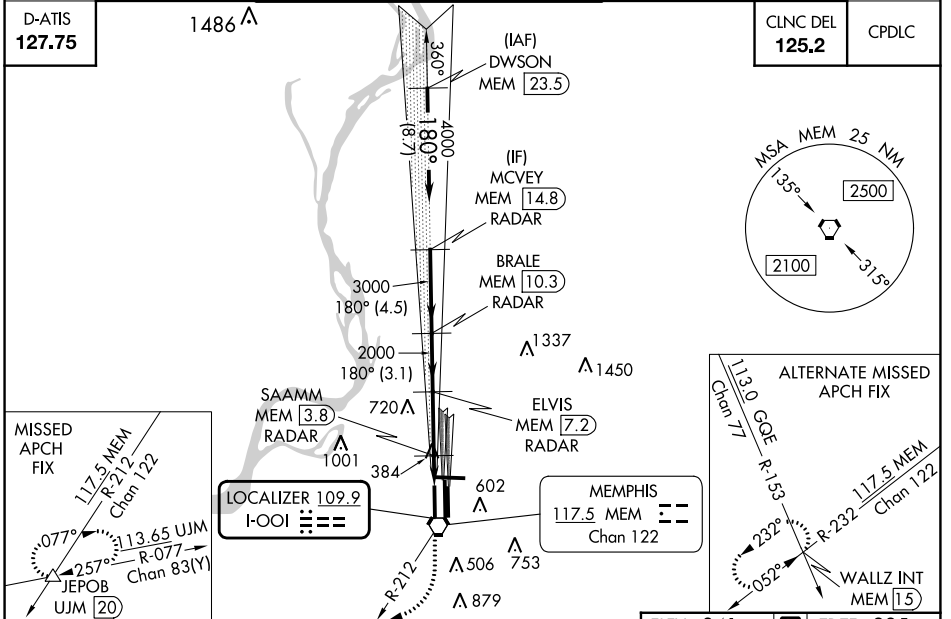


LOC I-OOI <b>109.9</b>	APP CRS <b>180°</b>	Rwy ldg <b>9320</b>
		TDZE <b>295</b>
		Apt Elev <b>341</b>

# ILS or LOC RWY 18R

MEMPHIS INTL (MEM)

Radar required for procedure entry, DME or RADAR required.		MALSR	MISSED APPROACH: Climb to 900 then climbing right turn to 5000 on MEM VORTAC R-212 to JEPOB INT/UJM 20 DME and hold.
<p>Simultaneous approach authorized. For inop ALS, increase S-ILS 18R Cat E visibility to RVR 4000, S-LOC 18R Cat E visibility to 2 SM, SAAMM fix minimums, increase S-LOC 18R Cat E visibility to 1½ SM.</p>			
MEMPHIS APP CON		MEMPHIS TOWER	GND CON
<b>119.1 291.6</b> (176°-355°)	(Rwy 9-27)	<b>118.3 257.8</b>	(Rwy 9-27) <b>121.0 379.2</b>
<b>125.8 338.3</b> (356°-175°)	(Rwys 18C-36C, 18L-36R)	<b>119.7 257.8</b>	(Rwys 18C-36C, 18L-36R) <b>121.9 379.2</b>
	(Rwy 18R-36L)	<b>128.425 257.8</b>	(Rwy 18R-36L) <b>121.65 379.2</b>



CATEGORY	A	B	C	D	E
S-ILS 18R	495/18 200 (200-½)				495/24 200 (200-½)
S-LOC 18R	840/24	545 (500-½)	840/50 545 (500-1)	840/60 545 (500-1¼)	840-1½ 545 (500-1½)
CIRCLING	940-1	599 (600-1)	940-1½ 599 (600-1½)	1020-2¼ 679 (700-2¼)	1140-2¾ 799 (800-2¾)
SAAMM FIX MINIMUMS (DME OR RADAR REQUIRED)					
S-LOC 18R	700/24	405 (400-½)	700/40 405 (400-¾)	700/50 405 (400-1)	
CIRCLING	940-1	599 (600-1)	940-1½ 599 (600-1½)	1020-2¼ 679 (700-2¼)	1140-2¾ 799 (800-2¾)

SE-1, 13 JUN 2024 to 11 JUL 2024

SE-1, 13 JUN 2024 to 11 JUL 2024

FAF to MAP 5.1 NM	Knots	60	90	120	150	180
	Min:Sec	5:06	3:24	2:33	2:02	1:42