

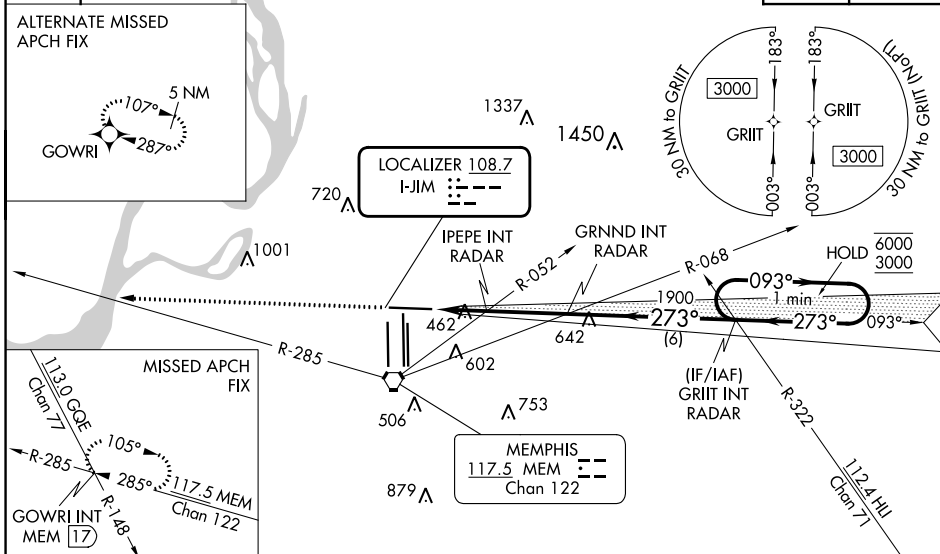
LOC I-JIM <b>108.7</b>	APP CRS <b>273°</b>	Rwy Idg TDZE Apt Elev	<b>8946</b> <b>292</b> <b>341</b>
---------------------------	------------------------	-----------------------------	---

# ILS or LOC RWY 27

MEMPHIS INTL (MEM)

RNAV 1-GPS or RADAR required for procedure entry.		MALSR	MISSED APPROACH: Climb to 5000 and intercept MEM VORTAC R-285 to GOWRI INT/17 DME and hold, continue climb-in-hold to 5000.
▼ For inop ALS, increase S-ILS Cat E visibility to RVR 4000, and S-LOC Cat E visibility to 2 SM, IPEPE fix minimums S-LOC Cat E visibility to 1/4 SM. ▲ *RVR 1800 authorized with use of FD or AP or HUD to DA.			
MEMPHIS APP CON		MEMPHIS TOWER	GND CON
<b>119.1 291.6</b> (176°-355°)	(Rwy 9-27) <b>118.3 257.8</b>	(Rwy 9-27) <b>121.0 379.2</b>	
<b>125.8 338.3</b> (356°-175°)	(Rwys 18C-36C, 18L-36R) <b>119.7 257.8</b>	(Rwys 18C-36C, 18L-36R) <b>121.9 379.2</b>	
	(Rwy 18R-36L) <b>128.425 257.8</b>	(Rwy 18R-36L) <b>121.65 379.2</b>	

D-ATIS <b>127.75</b>	CLNC DEL <b>125.2</b>	CPDLC
-------------------------	--------------------------	-------



ELEV 341	TDZE 292	5000	MEM R-285	GOWRI INT	GRND INT RADAR	GRIIT INT RADAR	One Minute Holding Pattern	
HIRL all Rwys TDZ/CL Rwys 18L, 18C, 18R, 36R, 36C, and 36L		CATEGORY		A	B	C	D	E
FAF to MAP 4.9 NM		S-ILS 27 *		492/24 200 (200-1/2)				
		S-LOC 27		980/24	688 (700-1/2)	980-1 1/2	688 (700-1 1/2)	
		CIRCLING		980-1	639 (700-1)	980-2	1020-2 1/4	1140-2 3/4
				639 (700-2)	679 (700-2 1/4)	799 (800-2 3/4)		
		IPEPE FIX MINIMUMS (DUAL VOR RECEIVERS OR RADAR REQUIRED)						
		S-LOC 27		720/24	428 (400-1/2)	720/40	428 (400-3/4)	
		CIRCLING		940-1	599 (600-1)	940-1 1/2	1020-2 1/4	1140-2 3/4
				599 (600-1 1/2)	679 (700-2 1/4)	799 (800-2 3/4)		
Knots 60 90 120 150 180		Min:Sec 4:54 3:16 2:27 1:58 1:38						

SE-1, 13 JUN 2024 to 11 JUL 2024

SE-1, 13 JUN 2024 to 11 JUL 2024